

## Service Entrance Cable

### Connectors and Entrance Heads



CI808 / CI816



Zinc Die Cast Locknut

CI806



Zinc Die Cast Locknut

CI804

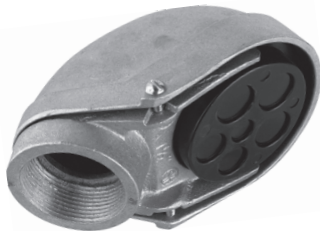


Cat. No.	Trade Size (in.)	Clamping Range (in.)		Throat (in.)
		Min.	Max.	
<b>Two Screw Fittings (Zinc Alloy)</b>				
CI804	3/8	0.18	0.64	0.64
CI806	3/4	0.41	0.82	0.83
CI808	1	0.50	1.04	1.05
CI810	1-1/4	0.56	1.06	1.37
CI812	1-1/2	0.63	1.60	1.81
CI816	2	0.86	2.06	2.05

NOTE : 3/8 in. trade size connectors require a 1/2 in. knockout.



CIefa-1/2 / CIefa-4



Cat. No.	Trade Size (in.)
<b>Service Entrance Heads (Cast Aluminum) Rigid Conduit</b>	
CIefa-1/2	1/2
CIefa-3/4	3/4
CIefa-1	1
CIefa-1 1/4	1-1/4
CIefa-1 1/2	1-1/2
CIefa-2	2
CIefa-2 1/2	2-1/2
CIefa-3	3
CIefa-3 1/2	3-1/2
CIefa-4	4

Trade Size (in.)	KO Dimensions (in.)		
	Small	Large	Center
1/2	0.312	—	—
3/4	0.375	0.400	—
1	0.438	0.500	—
1-1/4	0.438	0.625	—
1-1/2	0.610	0.750	0.400
2	0.750	1.000	0.525
2-1/2	0.875	1.300	1.000
3	1.125	1.750	1.125
3-1/2	1.125	1.750	1.125
4	1.125	1.750	1.125

CIeFSA-1/2 / CIeFSA-4



Cat. No.	Trade Size (in.)
<b>Service Entrance Heads (Cast Aluminum) EMT</b>	
CIeFSA-1/2	1/2
CIeFSA-3/4	3/4
CIeFSA-1	1
CIeFSA-1 1/4	1-1/4
CIeFSA-1 1/2	1-1/2
CIeFSA-2	2
CIeFSA-2 1/2	2-1/2
CIeFSA-3	3
CIeFSA-3 1/2	3-1/2
CIeFSA-4	4

KO Configuration	
1/2 in.	3/4 in. - 1-1/4 in.
1-1/2 in., 2 in.	2-1/2 in., 4 in.