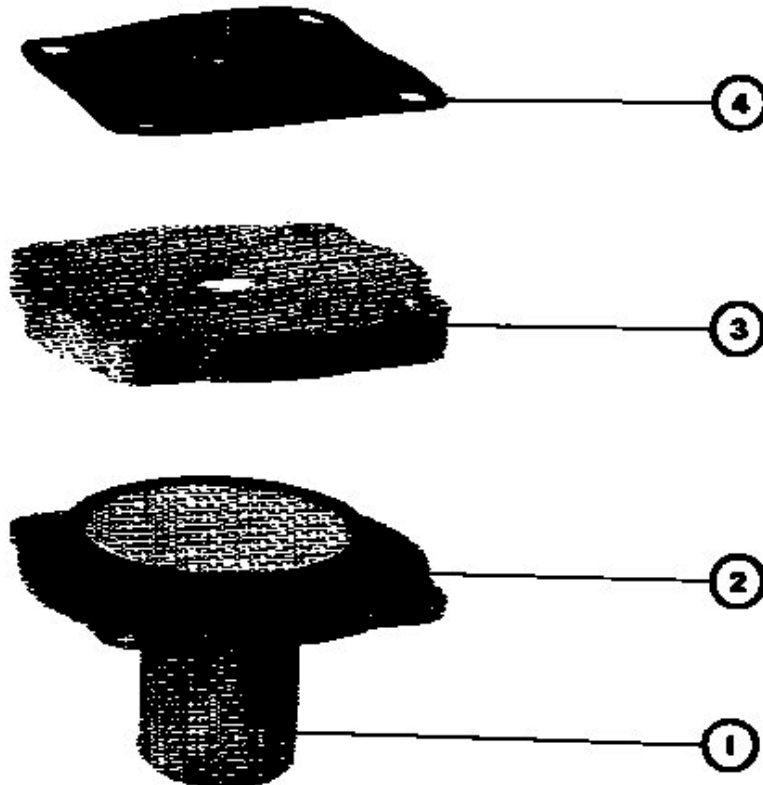




CLASS 9998 TYPE PC 266, 267
FOR CLASS 9998 TYPE PC 268, 269, SEE REVERSE SIDE



1. Remove actuator mounting screws, flange (1), diaphragm assembly (2), flange adaptor (3), and gasket (4).
2. Discard old diaphragm assembly (2) and gasket (4).
3. Install new diaphragm assembly (2) into cavity of flange adaptor (3).
4. Install flange (1) and actuator mounting screws, torque screws to 8-12 lbf-in (.09-.14 N·m).

65013-010-75C

