



Insulating Bushings

Press fit. Holds firmly in place when pulling cables.



EMT50



RGD50

For use with EMT.

CATALOG NUMBER	UPC/DCI/NAED MFG #01 8997	TRADE SIZE	UNIT PKG	STD PKG	DIM A	DIM B
EMT50	12200	1/2	100	1000	.531	.840
EMT75	12205	3/4	100	1000	.531	1.056
EMT100	12220	1	100	100	.625	1.280
EMT125	12225	1-1/4	100	100	.625	1.660
EMT150	12230	1-1/2	100	100	.625	1.915
EMT200	12235	2	50	50	.625	2.377
EMT250*	12240	2-1/2	25	25	1.225	3.062
EMT300*	12245	3	25	25	1.225	3.690
EMT350*	12250	3-1/2	25	25	1.231	4.187
EMT400*	12255	4	25	25	1.233	4.815

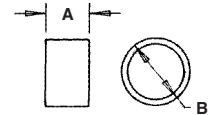
*Can also be used with Rigid.

For use with Rigid.

CATALOG NUMBER	UPC/DCI/NAED MFG #01 8997	TRADE SIZE	UNIT PKG	STD PKG	DIM A	DIM B
RGD50	51930	1/2	100	1000	.531	.989
RGD75	51932	3/4	100	1000	.531	1.185
RGD100	51933	1	100	100	.625	1.542
RGD125	51934	1-1/4	100	100	.625	1.891
RGD150	51935	1-1/2	100	100	.625	2.062
RGD200	51936	2	50	50	.625	2.655



E105706 LR49836

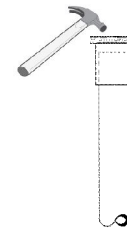
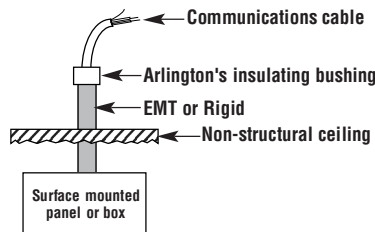


Meets 2005 NEC code requirements for 300-15(c) protection. Listed for use in environmental air handling spaces per 2005 NEC code requirements 300-22(c).

Arlington's Insulating Bushings protect cables from abrasion by the conduit. Examples: Power, Cable TV, computer datalines, telephone/modem, audio/video cables, alarm systems, security systems. Conduit is often used to protect cables where damage could occur in a house or building.



Example: Telephone cable protected by EMT insulating bushing.



Place board over bushing and tap onto EMT or Rigid with hammer.