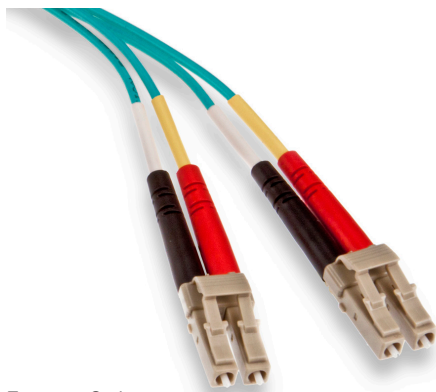


Economy Series Fiber Optic Patch Cords

APPLICATION

Leviton Fiber Optic Patch Cords are designed to interconnect or cross connect fiber networks within structured cabling systems. Leviton can produce any standard or custom fiber patch cord to meet your needs, and can offer quick-turn services for fast delivery.

Leviton offers two series of patch cords: Premium Series and Economy Series. Premium Series Patch Cords offer higher performance, optional custom labels, and optional 100% interferometer testing. Economy Series Patch Cords are a price-competitive solution that meets or exceeds all industry standards.



Economy Series
LC-LC Duplex, OM3 LOMM

SPECIFICATION

Multimode patch cords shall meet an optical return loss equal to or better than -25 dB per mated pair, and single-mode equal to or better than -50 dB for UPC polish, or -55 dB for APC polish. Insertion loss shall not exceed 0.4 dB per mated pair for multimode and 0.35 dB for single-mode. The patch cords shall be compliant with ANSI/TIA-568-C.3.

FEATURES

- Available in duplex configurations
- Industry-standard connector options
- All cables 100% optically tested
- Many fiber options: OM1, OM2, OM3, OM4, and OS2
- All cables are pre-labeled and individually bagged

DESIGN CONSIDERATIONS

- Offered in SC, ST, LC, or hybrid options
- All connectors have precision pre-radiused zirconia ferrules
- ST connectors have metal bodies
- Duplex clips included
- Single-mode SC available in UPC or APC

STANDARDS COMPLIANCE

Designed to meet the requirements of ANSI/TIA-568-C.3

COUNTRY OF ORIGIN

China

WARRANTY INFORMATION

For Leviton product warranties, visit leviton.com/warranty.

| COLOR CODES | |
|---|-----------------------------|
| Cable Jackets | |
| Single-mode | Yellow |
| Multimode (62.5/125 μm) | Orange |
| Multimode (50/125 μm) | Orange |
| Laser optimized multimode (50/125 μm) | Aqua |
| Connectors and adapters | |
| Single-mode | Blue |
| Single-mode, APC (angle polishing) | Green |
| Multimode (62.5/125 μm) | Beige |
| Multimode (50/125 μm) | Beige |
| Laser optimized multimode (50/125 μm) | Aqua (connectors are beige) |
| Boots (Polarity defined by the following color scheme) | |
| Single-Mode | Yellow and White |
| Multimode | Black and Red |

| PERFORMANCE SPECIFICATIONS | | |
|----------------------------|-----------------|------------------------------|
| | Multimode | Single-mode |
| Insertion Loss | 0.4 dB Max | 0.35 dB Max |
| Return Loss | >-25 dB | >-50 dB (UPC), >-55 dB (APC) |
| Durability | 500 Matings | 500 Matings |
| Repeatability | <0.2 dB | <0.2 dB |
| Operating Environment | -40° C to 75° C | -40° C to 75° C |
| Cable Retention | >20lbs / 89 N | >20lbs / 89 N |
| Rohs | Yes | Yes |

PRODUCT SPECIFICATIONS
Economy Series Fiber Optic Patch Cords



Economy Series Fiber Optic Patch Cords

PERFORMANCE SPECIFICATIONS (CONT.)

| Cable Performance | | | | | | | | | | | |
|----------------------------------|-----------------------------|--------|--------|--------|--------------------|------------------|--------------------------------|------------------------|----------------------|-------------|-------------|
| Fiber Type | Maximum Attenuation (db/km) | | | | Bandwidth (MHz*km) | | Transmission Distance (meters) | | | | |
| | 850nm | 1300nm | 1310nm | 1550nm | 850nm | 1300nm | 100Mb | 1GbE | 10GbE | 40GbE | 10GbE |
| Single-mode (OS2) | N/A | N/A | 0.4 | 0.3 | N/A | N/A | >5,000 @ 1310nm | | >10,000 @ 1310nm | NA | NA |
| 62.5/125 µm MM (OM1) | 3.5 | 1.0 | N/A | N/A | 200 | 500 | 300/2000 @ 850/1300nm | 300/600 @ 850/1300nm | 36/300 @ 850/1300nm | NA | NA |
| 50/125 µm MM (OM2) | 3.0 | 1.0 | N/A | N/A | 950 | 500 | | 750/600 @ 850/1300nm | 150/300 @ 850/1300nm | NA | NA |
| 50/125 µm LO (10G-300m) MM (OM3) | 3.0 | 1.0 | N/A | N/A | 2,000 ¹ | 500 ² | | 1,000/600 @ 850/1300nm | 300/300 @ 850/1300nm | 100 @ 850nm | 100 @ 850nm |
| 50/125 µm LO (10G-550m) MM (OM4) | 3.0 | 1.0 | N/A | N/A | 4,900 ¹ | 500 ² | | 1,210/600 @ 850/1300nm | 600/300 @ 850/1300nm | 150 @ 850nm | 150 @ 850nm |

¹ The effective modal bandwidth is determined based on an overfill launch (OFL per ANSI/TIA-455-204, except on laser-optimized fiber types).

² 10GbE transmission @ 1,300 nm only applies to 10GBASE-LX4 (CWDM).

62.5/125 µm MULTIMODE (OM1) OFNR DUPLEX

| DESCRIPTION | LENGTH (METERS) | DUPLEX |
|-------------|-----------------|-----------|
| SC-SC | 1 | 62DSC-M01 |
| SC-SC | 2 | 62DSC-M02 |
| SC-SC | 3 | 62DSC-M03 |
| SC-SC | 5 | 62DSC-M05 |
| SC-SC | 10 | 62DSC-M10 |
| ST-ST | 1 | 62DST-M01 |
| ST-ST | 2 | 62DST-M02 |
| ST-ST | 3 | 62DST-M03 |
| ST-ST | 5 | 62DST-M05 |
| ST-ST | 10 | 62DST-M10 |
| LC-LC | 1 | 62DLC-M01 |
| LC-LC | 2 | 62DLC-M02 |
| LC-LC | 3 | 62DLC-M03 |
| LC-LC | 5 | 62DLC-M05 |
| LC-LC | 10 | 62DLC-M10 |
| SC-ST | 1 | 62DCT-M01 |
| SC-ST | 2 | 62DCT-M02 |
| SC-ST | 3 | 62DCT-M03 |
| SC-ST | 5 | 62DCT-M05 |
| SC-ST | 10 | 62DCT-M10 |
| SC-LC | 1 | 62DCL-M01 |
| SC-LC | 2 | 62DCL-M02 |
| SC-LC | 3 | 62DCL-M03 |
| SC-LC | 5 | 62DCL-M05 |
| SC-LC | 10 | 62DCL-M10 |

50/125 µm MULTIMODE (OM2) OFNR DUPLEX

| DESCRIPTION | LENGTH (METERS) | DUPLEX |
|-------------|-----------------|-----------|
| SC-SC | 1 | 50DSC-M01 |
| SC-SC | 2 | 50DSC-M02 |
| SC-SC | 3 | 50DSC-M03 |
| SC-SC | 5 | 50DSC-M05 |
| SC-SC | 10 | 50DSC-M10 |
| ST-ST | 1 | 50DST-M01 |
| ST-ST | 2 | 50DST-M02 |
| ST-ST | 3 | 50DST-M03 |
| ST-ST | 5 | 50DST-M05 |
| ST-ST | 10 | 50DST-M10 |
| LC-LC | 1 | 50DLC-M01 |
| LC-LC | 2 | 50DLC-M02 |
| LC-LC | 3 | 50DLC-M03 |
| LC-LC | 5 | 50DLC-M05 |
| LC-LC | 10 | 50DLC-M10 |
| SC-LC | 1 | 50DCL-M01 |
| SC-LC | 2 | 50DCL-M02 |
| SC-LC | 3 | 50DCL-M03 |
| SC-LC | 5 | 50DCL-M05 |
| SC-LC | 10 | 50DCL-M10 |

Leviton Network Solutions
 2222 - 222nd St. SE
 Bothell, WA 98021-4416

Asia / Pacific
 T +1.631.812.6228
 E infoasean@leviton.com

Canada
 T +1.514.954.1840
 E pcservice@leviton.com

Caribbean
 T +1.954.593.1896
 E info@caribbean@leviton.com

China
 T +852.2774.9876
 E infochina@leviton.com

Colombia
 T +57.1.743.6045
 E info@colombia@leviton.com

tel 1-800-824-3005
 tel +1-425-486-2222
 appeng@leviton.com
 www.leviton.com

Europe
 T +33.6.8869.1380
 E infoeurope@leviton.com

India / SAARC
 T +971.4.886.4722
 E infoindia@leviton.com

Mexico
 T +52.55.5082.1040
 E lsamarketing@leviton.com

Middle East & Africa
 T +971.4.886.4722
 E lmeinfo@leviton.com

South Korea
 T +82.2.3273.9963
 E info@korea@leviton.com

| 50/125 μm LOMM (OM3) OFNR DUPLEX | | |
|----------------------------------|-----------------|-----------|
| DESCRIPTION | LENGTH (METERS) | DUPLEX |
| SC-SC | 1 | 5LDSC-M01 |
| SC-SC | 2 | 5LDSC-M02 |
| SC-SC | 3 | 5LDSC-M03 |
| SC-SC | 5 | 5LDSC-M05 |
| SC-SC | 10 | 5LDSC-M10 |
| LC-LC | 1 | 5LDLC-M01 |
| LC-LC | 2 | 5LDLC-M02 |
| LC-LC | 3 | 5LDLC-M03 |
| LC-LC | 5 | 5LDLC-M05 |
| LC-LC | 10 | 5LDLC-M10 |
| SC-LC | 1 | 5LDCL-M01 |
| SC-LC | 2 | 5LDCL-M02 |
| SC-LC | 3 | 5LDCL-M03 |
| SC-LC | 5 | 5LDCL-M05 |
| SC-LC | 10 | 5LDCL-M10 |

| 50/125 μm LOMM (OM4) OFNR DUPLEX | | |
|----------------------------------|-----------------|-----------|
| DESCRIPTION | LENGTH (METERS) | DUPLEX |
| LC-LC | 1 | 54DLC-M01 |
| LC-LC | 2 | 54DLC-M02 |
| LC-LC | 3 | 54DLC-M03 |
| LC-LC | 5 | 54DLC-M05 |
| LC-LC | 10 | 54DLC-M10 |
| SC-LC | 1 | 54DCL-M01 |
| SC-LC | 2 | 54DCL-M02 |
| SC-LC | 3 | 54DCL-M03 |
| SC-LC | 5 | 54DCL-M05 |
| SC-LC | 10 | 54DCL-M10 |

| 9/125 μm SINGLE-MODE (OS2) OFNR DUPLEX | | |
|--|-----------------|-----------|
| DESCRIPTION | LENGTH (METERS) | DUPLEX |
| SC-SC | 1 | UPDSC-S01 |
| SC-SC | 2 | UPDSC-S02 |
| SC-SC | 3 | UPDSC-S03 |
| SC-SC | 5 | UPDSC-S05 |
| SC-SC | 10 | UPDSC-S10 |
| LC-LC | 1 | UPDLC-S01 |
| LC-LC | 2 | UPDLC-S02 |
| LC-LC | 3 | UPDLC-S03 |
| LC-LC | 5 | UPDLC-S05 |
| LC-LC | 10 | UPDLC-S10 |
| SC-LC | 1 | UPDCL-S01 |
| SC-LC | 2 | UPDCL-S02 |
| SC-LC | 3 | UPDCL-S03 |
| SC-LC | 10 | UPDCL-S10 |
| ST-ST | 1 | UPDST-S01 |
| ST-ST | 2 | UPDST-S02 |
| ST-ST | 3 | UPDST-S03 |
| ST-ST | 10 | UPDST-S10 |
| SC-ST | 1 | UPDCT-S01 |
| SC-ST | 2 | UPDCT-S02 |
| SC-ST | 3 | UPDCT-S03 |
| SC-ST | 10 | UPDCT-S10 |

| APC SINGLE-MODE (OS2) SIMPLEX | | |
|-------------------------------|-----------------|-----------|
| DESCRIPTION | LENGTH (METERS) | SIMPLEX |
| SC-SC | 1 | APSSC-S01 |
| SC-SC | 2 | APSSC-S02 |
| SC-SC | 3 | APSSC-S03 |
| SC-SC | 5 | APSSC-S05 |
| SC-SC | 10 | APSSC-S10 |



Leviton Network Solutions
2222 - 222nd St. SE
Bothell, WA 98021-4416

tel 1-800-824-3005
tel +1-425-486-2222
appeng@leviton.com
www.leviton.com

Asia / Pacific
T +1.631.812.6228
E infoasean@leviton.com

Europe
T +33.6.8869.1380
E infoeurope@leviton.com

Canada
T +1.514.954.1840
E pcservice@leviton.com

India / SAARC
T +971.4.886.4722
E infoindia@leviton.com

Caribbean
T +1.954.593.1896
E infocaribbean@leviton.com

Mexico
T +52.55.5082.1040
E lsamarketing@leviton.com

China
T +852.2774.9876
E infochina@leviton.com

Middle East & Africa
T +971.4.886.4722
E lmeinfo@leviton.com

Colombia
T +57.1.743.6045
E infocolombia@leviton.com

South Korea
T +82.2.3273.9963
E infokorea@leviton.com