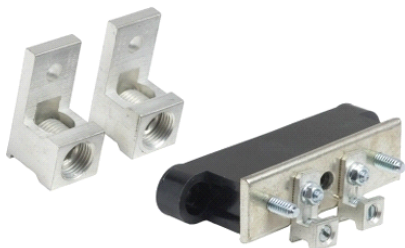


Product datasheet
Characteristics

CH200SN
200A Safety Switch Solid Neutral Assembly



Main

Range of product	Square D
Product or component type	Safety switch solid neutral assembly
Series name	Heavy duty

Complementary

[In] rated current	200 A
AWG gauge	AWG 2/0 (copper or aluminium) 300 kcmil (copper or aluminium)

Environment

Offer Sustainability

Sustainable offer status	Green Premium product
RoHS (date code: YYWW)	Compliant - since 1313 - Schneider Electric declaration of conformity
REACH	Reference not containing SVHC above the threshold
Product environmental profile	Available
Product end of life instructions	Need no specific recycling operations

The information provided in this documentation contains general descriptions and/or technical characteristics of the products contained herein. This documentation is not intended as a substitute for and is not to be used for determining suitability or reliability of these products for specific user applications. It is the duty of any such user or integrator to perform the appropriate and complete risk analysis, evaluation and testing of the products with respect to the relevant specific application or use thereof. Neither Schneider Electric Industries SAS nor any of its affiliates or subsidiaries shall be responsible or liable for misuse of the information contained herein.