

# cove heater

**KCV**  
 SERIES

**CONVECTION / RADIANT**


*All New Design!*


**FEATURES:**

- Radiant Heat
- Convection Heat
- Quiet Running
  
- Standard color: almond (-A)
- Thick, extruded aluminum front panel with a powder-coated high temperature, textured finish
- Ribbed front for maximum surface radiation
- Junctionbox at each end
- 7/8" diameter knockouts for 1/2" conduit
- Open-back design for maximum convection airflow
- No moving parts
- Long life elements
- Easy surface-mount installation
- Wall thermostat recommended

**The cove heater is primarily a radiant heater**

but also produces convection heat by heating the air similar to a baseboard. By combining the quick comfort of radiant heat along with the sustained warmth of convection heat, warm air is uniformly dispersed throughout the room.

The cove heater is mounted a minimum of 4 inches from the ceiling, keeping it out-of-the-way and eliminating any furniture placement problems. It is much lower in surface temperature than a baseboard or fan heater, making

it a very pleasant form of heat similar to older ceiling cable heating systems. With no moving parts this heater is quiet and maintenance-free.

Typical uses are day care centers, assisted living housing, housing developments, laundry rooms, bathrooms, bedrooms, living rooms and shops. Use any place a heater is needed where placement too low on the wall is inappropriate or soft heat is preferred. King recommends using a wall thermostat.

**OPTIONS:**

- 1-Pole or 2-Pole thermostat mounts in junctionbox
- Color: white (-BW)



Improved Extruded Surface Panel

**ENGINEERING SPECIFICATIONS:**

Contractor shall supply and install KCV Series electric cove heaters manufactured by King Electrical Mfg. Company, of the wattage and voltage as indicated on the plans. The heater shall be designed to provide radiant and convection heat to the space to be heated.

**Construction:**

- The heaters shall be constructed of extruded aluminum with a maximum cross section thickness of .962".
- The heater surface shall have a sawtooth profile to increase radiating surface area.
- The heater shall be open on top and bottom for maximum convection heating of room air.
- The heater shall have a 32 cubic inch junctionbox at both ends, furnished with 7/8" knockouts on back and top to facilitate 1/2" conduit.

- The heater shall be powder-coated with high temperature-resistant paint.
- Heater elements shall be of Ni-Chrome wire embedded in Magnesium Oxide powder enclosed and sealed in aluminum metal tubing.
- Heater elements shall have wattage density of approximately 150 watts per lineal foot.
- Heaters shall have a full length wall can constructed of 22 gauge electrogalvanized steel with baked enamel finish.
- Heaters shall be supplied with a one year limited warranty.

**Ratings and Approvals:**

- The heaters shall be available in ratings from 250 through 1500 Watts at 120 and 208/240 Volts.
- UL (E41422), ETL (473-2735)

**SELECTION:**

WATTAGE	120V		208V		240V		LENGTH	WT. (lbs.)
	MODEL	UPC #093319 PART #	MODEL	UPC #093319 PART #	MODEL	UPC #093319 PART #		
210	KCV1202	11801					24"	5.5
420	KCV1204	11800	KCV2004	11816	KCV2404	11824	34"	7
560	KCV1206	11803	KCV2006	11817	KCV2406	11827	47"	9.5
700	KCV1207	11806	KCV2007	11819	KCV2407	11830	59"	11
840			KCV2009	11820	KCV2409	11833	71"	13
935	KCV1210	11812	KCV2010	11821	KCV2410	11836	83"	15.5
1125			KCV2012	11822	KCV2412	11839	94"	17
1400			KCV2015	11823	KCV2415	11842	118"	26

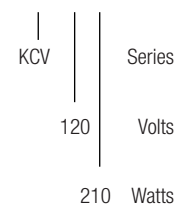
**ACCESSORIES:**

MODEL	DESCRIPTION	UPC #093319 PART #	WT. (lbs.)
KCVT-1	Single Pole Thermostat Kit	11845	.25
KCVT-2	Double Pole Thermostat Kit	11848	.25

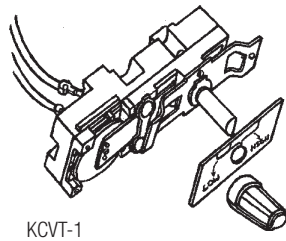
**\*Remote wall-mounted thermostats are recommended for best control**

**MODEL CODE:**

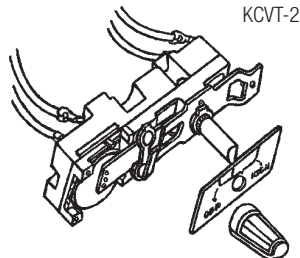
**KCV1202**



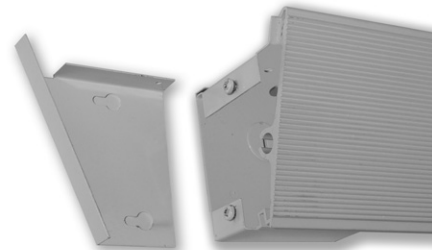
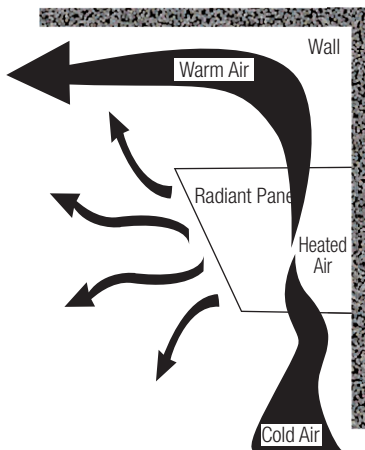
Standard Color: Almond



KCVT-1



KCVT-2

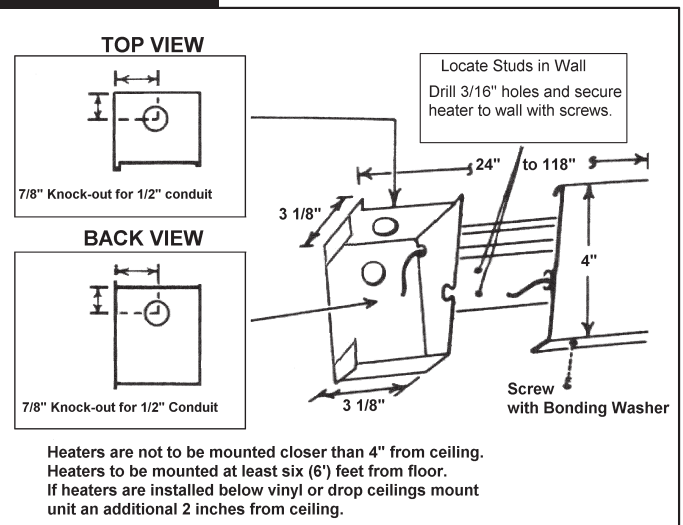


Easy wiring from side junction box cover

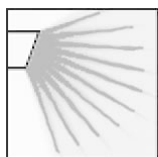
Thermostat mounts on end plate

\*ES230 remote wall-mounted electric thermostats are recommended for best control

**DIMENSIONS:**

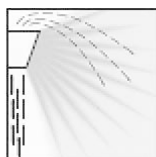


Heaters are not to be mounted closer than 4" from ceiling.  
Heaters to be mounted at least six (6') feet from floor.  
If heaters are installed below vinyl or drop ceilings mount unit an additional 2 inches from ceiling.



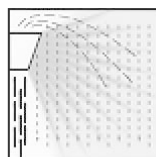
**Radiant**

A large portion of the heat produced is emitted as radiant infrared invisible rays.



**Convection**

A portion of the heat produced is transmitted by natural convection from the top of the heater.



**Re-Radiation**

The air heated by convection travels horizontally across the ceiling. It also becomes a source of radiant heat and re-radiates heat throughout the entire room.