



Quality Products. Service Excellence.

Type 4 Mild Steel Wallmount Enclosure 1418 N4 Series

Continuous Hinge Door with Clamps



Application

- Designed for use as instrument enclosures, electric, hydraulic or pneumatic control housings, electrical junction boxes or terminal wiring enclosures.
- Provides protection where equipment may be hosed down or otherwise be very wet, or in outdoor applications for full weather protection.

Standards

- UL 508A Type 3R,12, 4
- CSA Type 3R, 12, 4
- Complies with
 - NEMA Type 3R, 4, 12 and 13
 - JIC EGP-1-1967 unless marked¹
 - IEC 60529, IP66

Construction

- Formed 14 gauge steel bodies and doors.
- Smooth, continuously welded seams without knockouts, cutouts or holes.
- Door and body stiffeners are provided in the larger enclosures for extra rigidity. Welded brackets provide for enclosure mounting.
- Formed lip on door and enclosure exclude flowing liquids and contaminants.
- Stainless steel continuous hinge on door may be removed by pulling the stainless steel hinge pin.
- Door is secured with easily operated stainless steel clamps.
- Provision for padlocking.
- Seamless poured-in place gasket.
- A removable 12 gauge inner panel is included.
- Collar studs are provided for mounting inner panels.
- A bonding stud is provided on the door and a grounding stud is provided in the enclosure.
- A literature pocket is provided for the inside of the door.

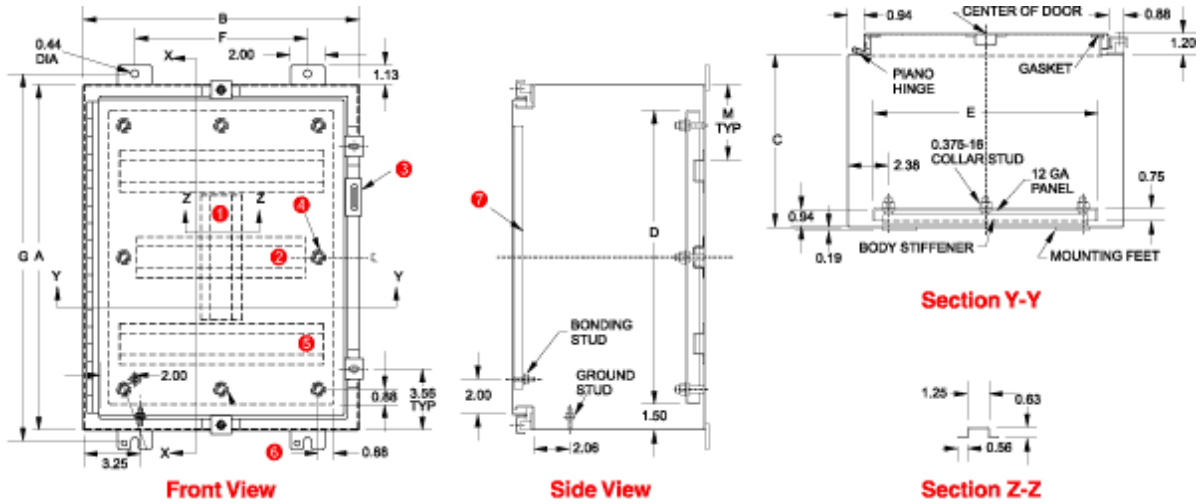
Finish

- Cover and enclosure are finished in recoatable smooth ANSI 61 gray powder coating.
- Removable inner panel is finished in white powder coating.

Accessories

- Inner Panels
- Blowers and Fans
- Door Clamping Hardware
- Drip Shield Kit
- Floor Stand Kit
- Gland Plates
- Lock kit
- Wallmount Quick Release Clamp
- Climate Control
- Ventilation
- Door Stop Kit
- Enclosure Stabilizers
- Filtered Fans
- Heaters
- Type 3R Louvered Vent Kits
- Swing Panel Kit

- Terminal Kits
- Window Kits
- Temperature Controls and Accessories
- Ground Wire Kits



- ① Vertical stiffener required on KK and M only.
- ② Omit center body stiffener if A is less than 41".
- ③ Padlocking hasp and staple.
- ④ Omit 2 middle studs if A is less than 31".
- ⑤ Omit body stiffeners if A or B is less than 29 .
- ⑥ Omit 2 middle studs if B is less than 31".
- ⑦ Omit door stiffener if A or B is less than 31" except if Ax B is 42"x30" or 48"x30".

Part No.	Panel Size				Mtg. Centers		
	A	B	C	D	E	F	G
1418N4B6	16.00	12.00	6.00	13.00	9.00	9.50	17.25
1418N4G6	16.00	16.00	6.00	13.00	13.00	10.00	17.25
1418N4CR6	16.00	20.00	6.00	13.00	17.00	14.00	17.25
1418N4C6	20.00	16.00	6.00	17.00	13.00	10.00	21.25
1418N4D6	20.00	20.00	6.00	17.00	17.00	14.00	21.25
1418N4AR6	24.00	12.00	6.00	21.00	9.00	9.50	25.25
1418N4H6	24.00	16.00	6.00	21.00	13.00	10.00	25.25
1418N4E6	24.00	20.00	6.00	21.00	17.00	14.00	25.25
1418N4J6	24.00	24.00	6.00	21.00	21.00	18.00	25.25
1418N4F6	30.00	20.00	6.00	27.00	17.00	14.00	31.25
1418N4K6	30.00	24.00	6.00	27.00	21.00	18.00	31.25
1418N4L6	36.00	24.00	6.00	33.00	21.00	18.00	37.25
1418N4B8	16.00	12.00	8.00	13.00	9.00	9.50	17.25
1418N4C8	20.00	16.00	8.00	17.00	13.00	10.00	21.25
1418N4D8	20.00	20.00	8.00	17.00	17.00	14.00	21.25
1418N4ER8	20.00	24.00	8.00	17.00	21.00	18.00	21.25
1418N4E8	24.00	20.00	8.00	21.00	17.00	14.00	25.25
1418N4J8	24.00	24.00	8.00	21.00	21.00	18.00	25.25
1418N4KR8	24.00	30.00	8.00	21.00	27.00	24.00	25.25
1418N4F8	30.00	20.00	8.00	27.00	17.00	14.00	31.25
1418N4K8	30.00	24.00	8.00	27.00	21.00	18.00	31.25
1418N4KK8	30.00	30.00	8.00	27.00	27.00	24.00	31.25
1418N4L8	36.00	24.00	8.00	33.00	21.00	18.00	37.25
1418N4M8	36.00	30.00	8.00	33.00	27.00	24.00	37.25
1418N4O8 [†]	42.00	30.00	8.00	39.00	27.00	24.00	43.25
1418N4P8 [†]	42.00	36.00	8.00	39.00	33.00	30.00	43.25
1418N4S8 [†]	48.00	36.00	8.00	45.00	33.00	30.00	49.25
1418N4T8 [†]	60.00	36.00	8.00	57.00	33.00	30.00	61.25

Part No.	Panel Size					Mtg. Centers	
	A	B	C	D	E	F	G
1418N4C10	20.00	16.00	10.00	17.00	13.00	10.00	21.25
1418N4E10	24.00	20.00	10.00	21.00	17.00	14.00	25.25
1418N4K10	30.00	24.00	10.00	27.00	21.00	18.00	31.25
1418N4M10	36.00	30.00	10.00	33.00	27.00	24.00	37.25
1418N4R10 ¹	48.00	30.00	10.00	45.00	27.00	24.00	49.25
1418N4S10 ¹	48.00	36.00	10.00	45.00	33.00	30.00	49.25
1418N4T10 ¹	60.00	36.00	10.00	57.00	33.00	30.00	61.25
1418N4E12	24.00	20.00	12.00	21.00	17.00	14.00	25.25
1418N4K12	30.00	24.00	12.00	27.00	21.00	18.00	31.25
1418N4L12	36.00	24.00	12.00	33.00	21.00	18.00	37.25
1418N4M12	36.00	30.00	12.00	33.00	27.00	24.00	37.25
1418N4P12 ¹	42.00	36.00	12.00	39.00	33.00	30.00	43.25
1418N4S12 ¹	48.00	36.00	12.00	45.00	33.00	30.00	49.25
1418N4K16	30.00	24.00	16.00	27.00	21.00	18.00	31.25
1418N4M16	36.00	30.00	16.00	33.00	27.00	24.00	37.25
1418N4S16 ¹	48.00	36.00	16.00	45.00	33.00	30.00	49.25
1418N4T16 ¹	60.00	36.00	16.00	57.00	33.00	30.00	61.25

¹ Does not meet JIC requirements

Data subject to change without notice

© 2018. Hammond Manufacturing Ltd. All rights reserved.