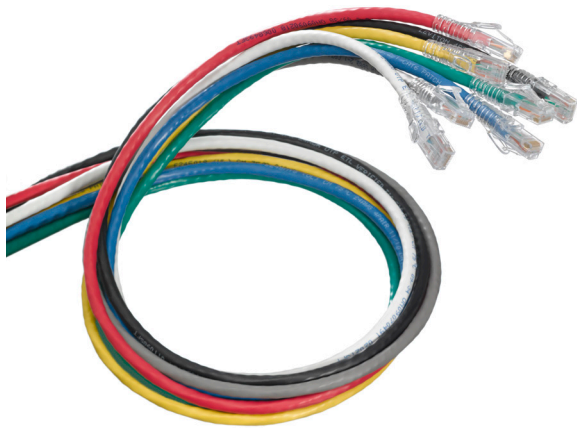


## eXtreme® Cat 6 SlimLine Boot UTP Patch Cords

### APPLICATION

Leviton SlimLine Boot Patch Cords feature a narrow profile to support traditional and high-density panels and switches. The snagless plug design makes the patch cords an excellent choice in environments where moves, adds, and changes are frequent.



### SPECIFICATION

Patch cords shall meet or exceed requirements for Cat 6 performance described in ANSI/TIA-568-C.2. Patch cords shall be 24-gauge stranded conductor with an 8-position modular plug on each end. The cords shall include a narrow-profile boot that allows for easy cord removal without snagging. The cords shall be available in standard lengths of 1, 3, 5, 7, 10, 15, and 20 feet. Patch cord plug shall be clear and contacts shall have industry-standard, ANSI/TIA-1096-A compliant 50 micro inches of gold plating.

### FEATURES

- Tested and verified by Intertek (ETL) to meet ANSI/TIA-568-C.2 component standards
- Improved plug access in tight spaces
- Snagless plug design with integrated strain-relief boot
- Stranded conductor for longer flex-life
- T568B wiring to function in either T568A or T568B applications
- All patch cords are backwards compatible with earlier ANSI/TIA category ratings
- Channel performance verified by third-party testing in 4-connector, 100-meter channel

### DESIGN CONSIDERATIONS

- ANSI/TIA channel performance limits total length of patching and equipment cords to 32 feet (10 meters) per ANSI/TIA-568-C.2 or 88.6 feet (27 meters) in a MUTOA application
- A variety of colors for color coding or organization
- Available in six standard lengths (custom lengths available)

### STANDARDS COMPLIANCE

- ANSI/TIA-568-C.2
- IEEE 802.3at and IEEE 802.3af requirements
- ANSI/TIA-1096-A (formerly FCC Part 68)
- cULus Listed
- ISO/IEC 11801
- RoHS
- UL 444 CM Rated
- Supports IEEE 802.3af, 802.3at, and Cisco UPoE up to 60 watts
- Supports emerging PoE standards such as the draft IEEE 802.3bt, up to 100 watts; with bundle sizes of 100 cords or less

### PHYSICAL SPECIFICATIONS

Dimensions:	See page two
Outer Diameter (O.D.):	0.225"
Materials:	24-gauge, UTP stranded conductor, modular non-keyed, 8-position, 8-conductor plug, 94V-0 rated
Colors:	White, Yellow, Red, Blue, Green, Grey, Black

### COUNTRY OF ORIGIN

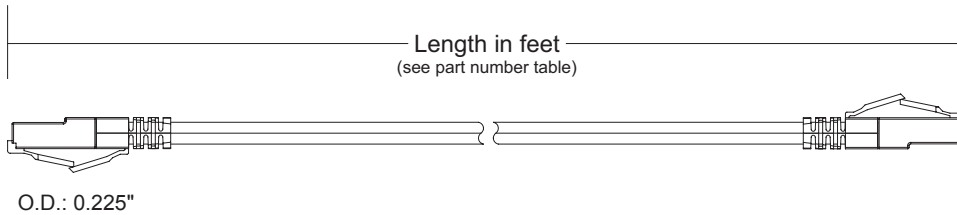
China

### WARRANTY INFORMATION

For a copy of Leviton product warranties, visit [www.leviton.com/warranty](http://www.leviton.com/warranty).

**ELECTRONIC FILES**

For CAD files, typical specs, or technical drawings (.DXF, .DWG), visit [www.leviton.com](http://www.leviton.com).



6D460-XXX

**PART NUMBERS**

Description	Part No.
eXtreme® Cat 6 SlimLine Boot UTP Patch Cord, 1-foot length (0.3m)	6D460-01*
eXtreme Cat 6 SlimLine Boot UTP Patch Cord, 3-foot length (0.9m)	6D460-03*
eXtreme Cat 6 SlimLine Boot UTP Patch Cord, 5-foot length (1.5m)	6D460-05*
eXtreme Cat 6 SlimLine Boot UTP Patch Cord, 7-foot length (2.1m)	6D460-07*
eXtreme Cat 6 SlimLine Boot UTP Patch Cord, 10-foot length (3.0m)	6D460-10*
eXtreme Cat 6 SlimLine Boot UTP Patch Cord, 15-foot length (4.6m)	6D460-15*
eXtreme Cat 6 SlimLine Boot UTP Patch Cord, 20-foot length (6.1m)	6D460-20*

\* = Colors: White (W), Yellow (Y), Red (R), Blue (L), Green (G), Grey (S), Black(E)



For assistance customizing your patch cords, please visit [www.leviton.com/configurator](http://www.leviton.com/configurator) or call Tech Support at 800.824.3005.



<b>Leviton Network Solutions</b> 2222 - 222nd St. SE Bothell, WA 98021-4416  tel 1-800-824-3005 tel +1-425-486-2222 appeng@leviton.com www.leviton.com	<b>Asia / Pacific</b> T +1.631.812.6228 E infoasean@leviton.com	<b>Canada</b> T +1.514.954.1840 E pcservice@leviton.com	<b>Caribbean</b> T +1.954.593.1896 E infocaribbean@leviton.com	<b>China</b> T +852.2774.9876 E infochina@leviton.com	<b>Colombia</b> T +57.1.743.6045 E infocolombia@leviton.com
	<b>Europe</b> T +33.6.8869.1380 E infoeurope@leviton.com	<b>India / SAARC</b> T +971.4.886.4722 E infoindia@leviton.com	<b>Mexico</b> T +52.55.5082.1040 E lsamarketing@leviton.com	<b>Middle East &amp; Africa</b> T +971.4.886.4722 E lmeinfo@leviton.com	<b>South Korea</b> T +82.2.3273.9963 E infokorea@leviton.com