

A2Y/A6Y Form 600

Form 600 fuses

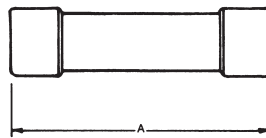
Mersen Form 600 fuses are the original current-limiting fuses, pre-dating all the standards. Their 500V DC rating (through 600A) is a useful feature for special fusing applications. Form 600 fuses provide a high degree of current limitation in AC and DC applications. Types 1 and 3 are dimensionally interchangeable with Class H and K fuses. Types 4 and 5 have unique rejection dimensions and are not interchangeable.

Catalog Numbers (amps)

250V		600V	
A2Y1-1	A2Y200-3	A6Y1-1	A6Y200-3
A2Y2-1	A2Y200-4	A6Y2-1	A6Y200-4
A2Y3-1	-	A6Y3-1	A6Y200-5
A2Y5-1	-	A6Y5-1	A6Y225-3
A2Y6-1	-	A6Y6-1	A6Y225-4
A2Y8-1	-	A6Y8-1	A6Y225-5
A2Y10-1	A2Y250-3	A6Y10-1	A6Y250-3
A2Y15-1	A2Y250-4	A6Y15-1	A6Y250-4
A2Y20-1	-	A6Y20-1	A6Y250-5
A2Y25-1	A2Y300-3	A6Y25-1	A6Y300-3
A2Y30-1	A2Y300-4	A6Y30-1	A6Y300-4
A2Y35-1	-	A6Y35-1	A6Y300-5
A2Y40-1	A2Y350-3	A6Y40-1	A6Y350-3
A2Y45-1	A2Y350-4	A6Y45-1	A6Y350-4
A2Y50-1	A2Y400-3	A6Y50-1	A6Y400-3
A2Y60-1	A2Y400-4	A6Y60-1	A6Y400-4
A2Y70-3	-	A6Y70-3	A6Y400-5
A2Y70-4	A2Y450-3	A6Y70-4	A6Y450-3
A2Y70-5	A2Y450-4	-	A6Y450-4
A2Y80-3	-	A6Y80-3	A6Y450-5
A2Y80-4	A2Y500-3	A6Y80-4	A6Y500-3
A2Y90-3	A2Y500-4	A6Y90-3	A6Y500-4
A2Y90-4	A2Y500-5	-	A6Y500-5
A2Y100-3	A2Y600-3	A6Y100-3	A6Y600-3
A2Y100-4	A2Y600-4	A6Y100-4	A6Y600-4
A2Y125-3	A2Y600-5	A6Y125-3	A6Y600-5
A2Y125-4	-	A6Y125-4	A6Y650-4
-	-	A6Y125-5	A6Y800-4
A2Y150-3	-	A6Y150-3	A6Y800-5
A2Y150-4	-	A6Y150-4	A6Y1000-4
-	-	A6Y150-5	A6Y1000-5
A2Y175-3	-	A6Y175-3	A6Y1200-4
A2Y175-4	-	A6Y175-4	A6Y1200-5
-	-	A6Y175-5	

Type 1, 1-60 Amperes Class K Dimensions

Ampere Rating	Inches	
	A	B
A2Y - 1-60A		
1-30	2	9/16
35-60	3	13/16
A6Y - 1-60A		
1-30	5	13/16
35-60	5-1/2	1-1/16



Ratings:

A2Y

Volts : 250VAC
: 500VDC
Amps : 1 to 600A
IR : 200kA I.R.AC
: 100kA I.R. DC

A6Y

Volts : 600VAC
: 500VDC
Amps : 1 to 8A (500VAC)
: 10 to 1200A (600VAC)
: 1 to 600A (500VDC)
IR : 200kA I.R. AC
: 100kA I.R. DC

Approvals:

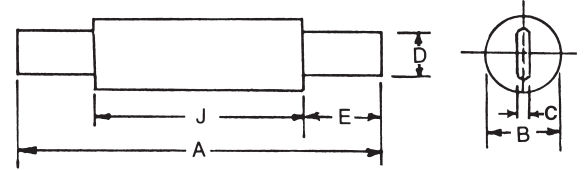
- UL Recognized Component
File E60314
- DC Tested to UL248-1 (1-600A)



A2Y/A6Y Form 600

Type 3, 70-600 Amps, Class K Dimensions

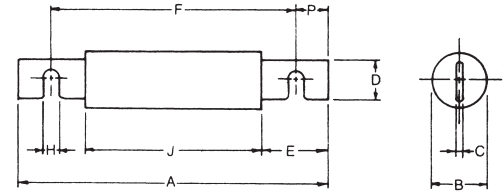
Ampere Rating	Inches					
	A	B	C	D	E	J
250 VAC/500 VDC - A2Y (Amp) - 3						
70-100	5-7/8	1	1/8	23/32	1-5/8	2-21/32
125-200	7-1/8	1-1/2	3/16	1-1/8	2-3/16	2-25/32
225-400	8-5/8	2	1/4	1-5/8	2-15/16	2-25/32
450-600	10-3/8	2-1/2	1/4	2	3-13/16	2-25/32
600 VAC/500 VDC - A6Y (Amp) - 3						
70-100	7-7/8	1	1/8	23/32	2-5/8	2-21/32
110-200	9-5/8	1-1/2	3/16	1-1/8	3-7/16	2-25/32
225-400	11-5/8	2	1/4	1-5/8	4-7/16	2-25/32
450-600	13-3/8	2-1/2	1/4	2	5-5/16	2-25/32



Type 3 70-600A

Type 4, 70-600 Amps – Dimensions

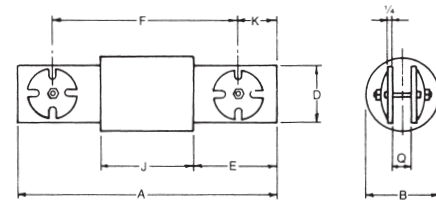
Ampere Rating	Inches									
	A	B	C	D	E	F	H	J	P	
250 VAC/500 VDC - A2Y (Amp) - 4										
70-100	5-7/8	1	1/8	23/32	1-5/8	4-7/8	13/64	2-21/32	1/2	
125-200	7-1/8	1-1/2	3/16	1-1/8	2-3/16	5-3/4	17/64	2-25/32	11/16	
225-400	8-5/8	2	1/4	1-5/8	2-15/16	6-3/4	21/64	2-25/32	15/16	
450-600	10-3/8	2-1/2	1/4	2	3-13/16	8-1/8	25/64	2-25/32	1-1/8	
600 VAC/500 VDC - A6Y (Amp) - 4										
70-100	7-7/8	1	1/8	23/32	2-5/8	6-7/8	13/64	2-21/32	1/2	
125-200	9-5/8	1-1/2	3/16	1-1/8	3-7/16	8-1/4	17/64	2-25/32	11/16	
225-400	11-5/8	2	1/4	1-5/8	4-7/16	9-3/4	21/64	2-25/32	15/16	
450-600	13-3/8	2-1/2	1/4	2	5-5/16	11-1/8	25/64	2-25/32	1-1/8	



Type 4 70-600A

Type 4, 650-1200 Amps – Dimensions

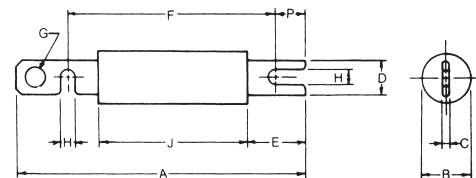
Ampere Rating	Inches							
	A	B	D	E	F	J	K	Q
600 VAC only - A6Y (Amp) - 4								
650-1200	10-1/2	3	2	3-3/8	7-7/8	3-3/4	1-5/16	5/8



Type 4 650-1200A

Type 5, 125-600 Amps – Dimensions

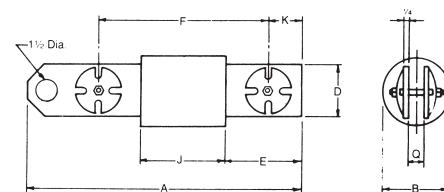
Ampere Rating	Inches									
	A	B	C	D	E	F	G	H	J	P
600 VAC/500 VDC - A6Y (Amp) - 5										
125-200	10-3/4	1-1/2	3/16	1-1/8	3-7/16	8-1/4	3/4	17/64	2-25/32	11/16
225-400	13-1/4	2	1/4	1-5/8	4-7/16	9-3/4	7/8	21/64	2-25/32	15/16
450-600	15-3/16	2-1/2	1/4	2	5-5/16	11-1/8	1	25/64	2-25/32	1



Type 5 125-600A

Type 5, 650-1200 Amps – Dimensions

Ampere Rating	Inches							
	A	B	D	E	F	J	K	Q
600 VAC only - A6Y (Amp) - 5								
650-1200	12-1/8	3	2	3-3/8	7-7/8	3-3/4	1-5/16	5/8



Type 5 650-1200A