

# Signal Towers & beacons



## Signal towers K70 Signal beacons KSB



8

Signal towers K70 and Signal beacons KSB offer a wide range of signal elements in all voltages and a solution for every signalling field.

### Signal towers K70

- Fast mounting of signal elements using bayonet fixing.
- Easy changing of bulbs for each module without tools.
- Flexibility of signal element combination.
- Up to 5 elements possible/up to 10 elements with bracket for 2-sided mounting.
- Flashing light elements can be mounted in each module.
- Up to 5 flashing light elements possible.
- High protection rating optical and audible signal elements with IP 54.
- LED elements for long life
- Large variety of different versions
  - Permanent light, 12-240V, AC/DC
  - Blinking light, 24-230V
  - Flashing light, 24-230V
  - Audible 85db continuous or pulsating
  - LED, 24V

### Signal beacons KSB

- Large variety of different versions:
  - Permanent light, max. 250V
  - Blinking light, 24V, AC/DC
  - Flashing light, 24-230VAC
  - LED light, 24V, AC/DC
- IP65 for outdoor use
- Available in 5 colors
- High impact polycarbonate
- UL File #175441

## Signal towers K70 Description

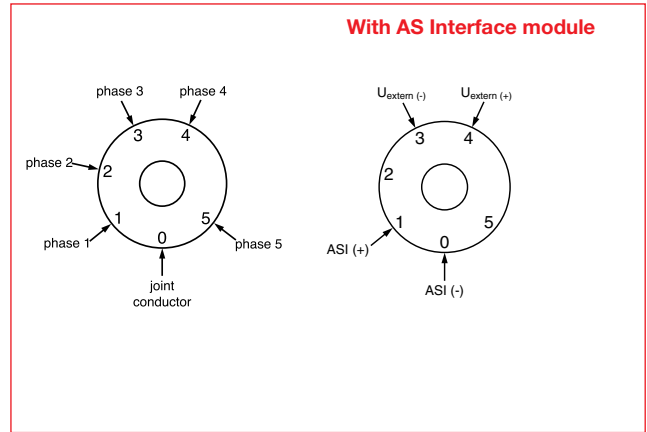
### Simple fitting with quick fix system

Each K 70 module is equipped with a bayonet fixing with integral contact system. The modules are fastened together by aligning the corresponding white marks then with a gentle twist they are locked into place (see the figures).



8

### Connection plans

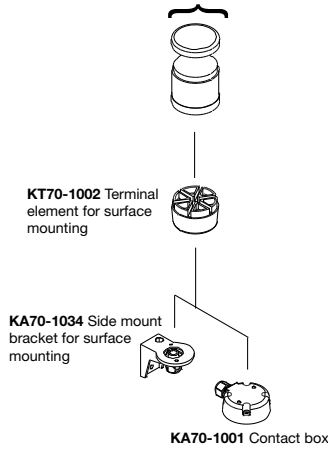


### Combination possibilities

#### Flush mounting

##### Stackable elements, 5 max

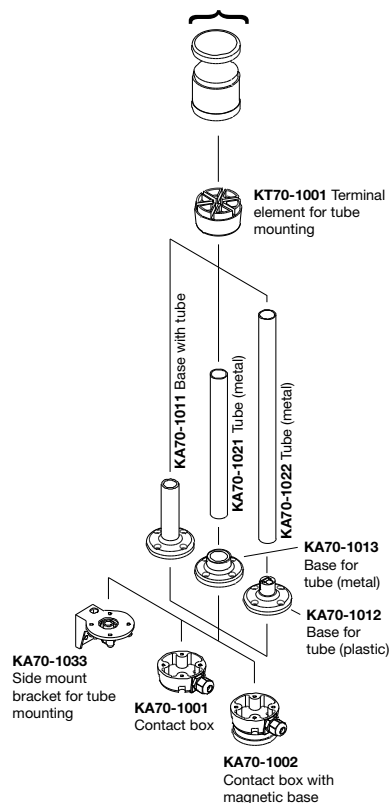
Cap, included with terminal element  
**KB70/KS70** Audible modules (Buzzer/Siren)  
**KASI** AS-Interface module  
**KL70** Light element



#### Tube mounting

##### Stackable elements, 5 max

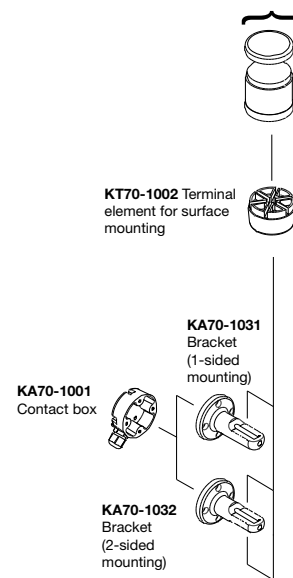
Cap, included with terminal element  
**KB70/KS70** Audible modules (Buzzer/Siren)  
**KASI** AS-Interface module  
**KL70** Light element



#### Side mounting

##### Stackable elements, 5 max

Cap, included with terminal element  
**KB70/KS70** Audible modules (Buzzer/Siren)  
**KASI** AS-Interface module  
**KL70** Light element



# Signal towers K70



## Optical modules

Description	Catalog No.	Ref. Code	List Price
<b>Light element</b>			
<b>Permanent light</b> , 12-240 V AC/DC. For bulb BA15d. Bulb not included.			
Red	<b>KL70-401R</b>	1SFA 616 070 R4011	\$ 36.00
Green	<b>KL70-401G</b>	1SFA 616 070 R4012	
Yellow	<b>KL70-401Y</b>	1SFA 616 070 R4013	
Blue	<b>KL70-401L</b>	1SFA 616 070 R4014	
Clear	<b>KL70-401C</b>	1SFA 616 070 R4018	
<b>Permanent light</b> , 24 V AC/DC. LED included. Not changeable.			
Red	<b>KL70-305R</b>	1SFA 616 070 R3051	135.00
Green	<b>KL70-305G</b>	1SFA 616 070 R3052	
Yellow	<b>KL70-305Y</b>	1SFA 616 070 R3053	
Blue	<b>KL70-305L</b>	1SFA 616 070 R3054	
White	<b>KL70-305C</b>	1SFA 616 070 R3058	
<b>Blinking light</b> , 24 V AC/DC with integrated LED. Not changeable.			
Red	<b>KL70-306R</b>	1SFA 616 070 R3061	140.00
Green	<b>KL70-306G</b>	1SFA 616 070 R3062	
Yellow	<b>KL70-306Y</b>	1SFA 616 070 R3063	
Blue	<b>KL70-306L</b>	1SFA 616 070 R3064	
Clear	<b>KL70-306C</b>	1SFA 616 070 R3068	
<b>Blinking light</b> , 115 V AC/DC with integrated LED. Not changeable.			
Red	<b>KL70-342R</b>	1SFA 616 070 R3421	140.00
Green	<b>KL70-342G</b>	1SFA 616 070 R3422	
Yellow	<b>KL70-342Y</b>	1SFA 616 070 R3423	
Blue	<b>KL70-342L</b>	1SFA 616 070 R3424	
Clear	<b>KL70-342C</b>	1SFA 616 070 R3428	
<b>Blinking light</b> , 230 V AC/DC with integrated LED. Not changeable.			
Red	<b>KL70-352R</b>	1SFA 616 070 R3521	140.00
Green	<b>KL70-352G</b>	1SFA 616 070 R3522	
Yellow	<b>KL70-352Y</b>	1SFA 616 070 R3523	
Blue	<b>KL70-352L</b>	1SFA 616 070 R3524	
Clear	<b>KL70-352C</b>	1SFA 616 070 R3528	
<b>Flashing light</b> , 24 V DC. Xenon tube included. Not changeable.			
Red	<b>KL70-203R</b>	1SFA 616 070 R2031	165.00
Green	<b>KL70-203G</b>	1SFA 616 070 R2032	
Yellow	<b>KL70-203Y</b>	1SFA 616 070 R2033	
Blue	<b>KL70-203L</b>	1SFA 616 070 R2034	
Clear	<b>KL70-203C</b>	1SFA 616 070 R2038	
<b>Flashing light</b> , 115 V AC. Xenon tube included. Not changeable.			
Red	<b>KL70-113R</b>	1SFA 616 070 R1131	155.00
Green	<b>KL70-113G</b>	1SFA 616 070 R1132	
Yellow	<b>KL70-113Y</b>	1SFA 616 070 R1133	
Blue	<b>KL70-113L</b>	1SFA 616 070 R1134	
Clear	<b>KL70-113C</b>	1SFA 616 070 R1138	
<b>Flashing light</b> , 230 V AC. Xenon tube included. Not changeable.			
Red	<b>KL70-123R</b>	1SFA 616 070 R1231	155.00
Green	<b>KL70-123G</b>	1SFA 616 070 R1232	
Yellow	<b>KL70-123Y</b>	1SFA 616 070 R1233	
Blue	<b>KL70-123L</b>	1SFA 616 070 R1234	
Clear	<b>KL70-123C</b>	1SFA 616 070 R1238	
<b>Rotating light</b> , 24 V AC/DC. LED included. Not changeable.			
Red	<b>KL70-307R</b>	1SFA 616 070 R3071	140.00
Green	<b>KL70-307G</b>	1SFA 616 070 R3072	
Yellow	<b>KL70-307Y</b>	1SFA 616 070 R3073	
Blue	<b>KL70-305L</b>	1SFA 616 070 R3074	
White	<b>KL70-305C</b>	1SFA 616 070 R3078	

## Signal towers K70 Accessories

Description	Catalog No.	Ref. Code	List Price
<b>Bulbs</b> Bulb Ba 15d, 42 mm, Max 7 W For permanent or blinking light. 2000 hour life.			
24 V, 5 W, AC/DC	<b>KLB24</b>	1SFA 616 923 R1028	<b>\$ 8.00</b>
115 V, 5 W, AC/DC	<b>KLB1</b>	1SFA 616 923 R1118	
230 V, 5 W, AC/DC	<b>KLB2</b>	1SFA 616 923 R1148	
<b>LED bulbs</b> Ba 15d. For 24 V AC/DC, 40 mA			
Color:			<b>175.00</b>
Red	<b>KA4-1021</b>	1SFA 616 924 R1021	
Green	<b>KA4-1022</b>	1SFA 616 924 R1022	
Yellow	<b>KA4-1023</b>	1SFA 616 924 R1023	
Blue	<b>KA4-1024</b>	1SFA 616 924 R1024	
White	<b>KA4-1025</b>	1SFA 616 924 R1025	
<b>Audible modules</b>			
<b>Buzzer element</b>			
85 dB, continuous or pulsating tone, adjustable, 8mA			<b>95.00</b>
24 V AC/DC	<b>KB70-3001</b>	1SFA 616 071 R3001	
115 V AC/DC	<b>KB70-3101</b>	1SFA 616 071 R3101	
230 V AC	<b>KB70-1201</b>	1SFA 616 071 R1201	
<b>Siren element</b>			
Multi function, 8 diff. tones adjustable, volume adjustable 100 dB, 115 VAC, 40 mA	<b>KS70-1104</b>	1SFA 616 073 R1104	<b>155.00</b>
Multi function, 8 diff. tones adjustable, 40 mA volume adjustable 100 dB, 230 VAC, 40 mA	<b>KS70-1204</b>	1SFA 616 073 R1204	<b>155.00</b>
Multi function, 7 diff. tones adjustable, volume adjustable, remote control 100 dB, 24 VDC, 100 mA	<b>KS70-2004</b>	1SFA 616 073 R2004	<b>145.00</b>
Multi function, 8 diff. tones adjustable, volume adjustable, 100 dB, 24 VAC/DC, 80 mA	<b>KS70-3004</b>	1SFA 616 073 R3004	<b>145.00</b>
Continuous tone alternating 108 dB, 24 VDC, 100 mA	<b>KS70-2002</b>	1SFA 616 073 R2002	<b>100.00</b>
<b>AS-Interface module</b>			
18,5-31,6 VAC/DC for external voltage	<b>KASI-4101</b>	1SFA 616 079 R4101	<b>300.00</b>
<b>Terminal elements</b>			
For tube mounting, including cap	<b>KT70-1001</b>	1SFA 616 075 R1001	<b>40.00</b>
For bracket or base, including cap	<b>KT70-1002</b>	1SFA 616 075 R1002	<b>40.00</b>
<b>Special parts</b>			
<b>Contact box</b>			
Cable exit at side	<b>KA70-1001</b>	1SFA 616 077 R1001	<b>23.00</b>
Magnetic base	<b>KA70-1002</b>	1SFA 616 077 R1002	<b>65.00</b>
<b>Base with tube</b>			
D=25 mm L=110 mm	<b>KA70-1011</b>	1SFA 616 077 R1011	<b>33.00</b>
<b>Base for tube</b>			
D=25 mm, Plastic	<b>KA70-1012</b>	1SFA 616 077 R1012	<b>15.00</b>
D=25 mm, Metal	<b>KA70-1013</b>	1SFA 616 077 R1013	<b>32.00</b>
<b>Tube, anodized aluminum</b>			
D=25 mm L=250 mm	<b>KA70-1021</b>	1SFA 616 077 R1021	<b>20.00</b>
D=25 mm L=400 mm	<b>KA70-1022</b>	1SFA 616 077 R1022	<b>27.00</b>
<b>Bracket</b>			
1-sided mounting	<b>KA70-1031</b>	1SFA 616 077 R1031	<b>20.00</b>
2-sided mounting	<b>KA70-1032</b>	1SFA 616 077 R1032	<b>20.00</b>
For tube mounting	<b>KA70-1033</b>	1SFA 616 077 R1033	<b>20.00</b>
For surface mounting	<b>KA70-1034</b>	1SFA 616 077 R1034	<b>20.00</b>



KA70-1001



KA70-1002



KA70-1012



KA70-1013

KA70-1021



KA70-1011



KA70-1032



KA70-1033

# Signal beacons KSB

Pilot Devices  
Stacklights &  
signal beacons

## Signal beacons KSB



Description	Catalog No.	Ref. Code	List Price
<b>Permanent light</b> , 12-240 V AC/DC. For bulb BA15d. Bulb not included.			
Red	<b>KSB-401R</b>	1SFA 616 080 R4011	<b>\$ 55.00</b>
Green	<b>KSB-401G</b>	1SFA 616 080 R4012	
Yellow	<b>KSB-401Y</b>	1SFA 616 080 R4013	
Blue	<b>KSB-401L</b>	1SFA 616 080 R4014	
Clear	<b>KSB-401C</b>	1SFA 616 080 R4018	
<b>Flashing light</b> , 24 V DC. Xenon tube included. Not changeable.			
Red	<b>KSB-203R</b>	1SFA 616 080 R2031	<b>180.00</b>
Green	<b>KSB-203G</b>	1SFA 616 080 R2032	
Yellow	<b>KSB-203Y</b>	1SFA 616 080 R2033	
Blue	<b>KSB-203L</b>	1SFA 616 080 R2034	
Clear	<b>KSB-203C</b>	1SFA 616 080 R2038	
<b>Flashing light</b> , 115 V AC. Xenon tube included. Not changeable.			
Red	<b>KSB-113R</b>	1SFA 616 080 R1131	<b>155.00</b>
Green	<b>KSB-113G</b>	1SFA 616 080 R1132	
Yellow	<b>KSB-113Y</b>	1SFA 616 080 R1133	
Blue	<b>KSB-113L</b>	1SFA 616 080 R1134	
Clear	<b>KSB-113C</b>	1SFA 616 080 R1138	
<b>Flashing light</b> , 230 V AC. Xenon tube included. Not changeable.			
Red	<b>KSB-123R</b>	1SFA 616 080 R1231	<b>155.00</b>
Green	<b>KSB-123G</b>	1SFA 616 080 R1232	
Yellow	<b>KSB-123Y</b>	1SFA 616 080 R1233	
Blue	<b>KSB-123L</b>	1SFA 616 080 R1234	
Clear	<b>KSB-123C</b>	1SFA 616 080 R1238	
<b>LED Permanent light</b> , 24 V AC/DC. LED included. Not changeable.			
Red	<b>KSB-305R</b>	1SFA 616 080 R3051	<b>190.00</b>
Green	<b>KSB-305G</b>	1SFA 616 080 R3052	
Yellow	<b>KSB-305Y</b>	1SFA 616 080 R3053	
<b>LED Blinking light</b> , 24 V AC/DC. LED included. Not changeable.			
Red	<b>KSB-306R</b>	1SFA 616 080 R3061	<b>195.00</b>
Green	<b>KSB-306G</b>	1SFA 616 080 R3062	
Yellow	<b>KSB-306Y</b>	1SFA 616 080 R3063	
<b>LED Rotating light</b> , 24 V AC/DC. LED included. Not changeable.			
Red	<b>KSB-307R</b>	1SFA 616 080 R3071	<b>195.00</b>
Green	<b>KSB-307G</b>	1SFA 616 080 R3072	
Yellow	<b>KSB-307Y</b>	1SFA 616 080 R3073	
<b>Special parts</b>			
Anti-twist device	<b>KASB-100</b>	1SFA 616 087 R1000	<b>8.00</b>
<b>Bulbs for signal beacons</b> Max 10 W. For permanent light, 2,000 hour life.			
Bulb Ba15d, 52 mm:			
12 V, 7 W, AC/DC	<b>1SFA 616 922 R1018</b>	1SFA 616 922 R1018	<b>8.00</b>
24 V, 7 W, AC/DC	<b>1SFA 616 922 R1028</b>	1SFA 616 922 R1028	
115 V, 7 W, AC/DC	<b>1SFA 616 922 R1118</b>	1SFA 616 922 R1118	
220-260 V, 7-10 W, AC/DC	<b>1SFA 616 922 R1148</b>	1SFA 616 922 R1148	



## Technical data

### Signal Towers K70

### Signal Beacons KSB

#### Signal Towers K70

##### Approvals



##### Technical specifications

<b>Housing and accessories</b>	Polyamide, high impact, black
<b>Dome</b>	Polycarbonate, transparent
<b>Fixing</b>	Base mounting Tube mounting, for tube ø 25 mm Bracket mounting
<b>Socket</b>	B 15 d, for bulb max. 7W
<b>8 Connection</b>	Screwable connection up to 2.5 mm <sup>2</sup>
<b>Number of modules possible</b>	max. 5
<b>2-sided bracket</b>	max. 10 elements

##### Degrees of protection

<b>Light elements</b>	IP 54 UL Type 5
<b>Audible elements</b>	IP 54 UL Type 5

##### Electrical data

<b>Permanent light element</b>	12 - 240 V AC/DC
Bulb socket B 15 d, max 7 W	Bulb not included
<b>Blinking light element</b>	<u>24 V</u> <u>115 V</u> <u>230 V</u> AC/DC    AC/DC    AC/DC Bulb not included
Starting current	< 0.5 A
<b>Flashing light element</b>	<u>24 V</u> <u>115 V</u> <u>230 V</u> DC        AC        AC
Flash frequency	1 Hz    1 Hz    1 Hz
Flash energy	2 Ws    2 Ws    2 Ws
Life duration	4 x 10 <sup>6</sup> flashes
Current consumption	125 mA 20 mA 35 mA
reduced for AS-Interface	80 mA
Starting current	< 0.5 A at 24 V
<b>LED Permanent light element</b>	<u>24 V</u> AC/DC
Current consumption	45 mA
Starting current	< 0.5 A at 24 V
<b>LED Blinking light element</b>	<u>24 V</u> AC/DC
Current consumption	25 mA
Starting current	< 0.5 A at 24 V
Blink frequency	c. 1 Hz    c. 1 Hz    c. 1 Hz
<b>LED Rotating light element</b>	24 V, AC/DC
Current consumption	70 mA
Starting current	< 0.5 A at 24 V
Rotation frequency	c. 120 r.p.m.
<b>Temperature</b>	
Ambient temperature during operations	-20 to +50 °C

#### Signal Beacons KSB

##### Approvals



##### Technical specifications

<b>Housing and accessories</b>	PC/ABS-Blend, high impact, black
<b>Dome</b>	Polycarbonate, transparent
<b>Fixing</b>	Installation mounting for ø 37 mm (PG 29)
<b>Bulb socket</b>	B 15 d, max. 10 W
<b>Bulb change</b>	via rear access with bayonet mechanism (Bulb not included)
<b>Connection</b>	Screwable connection max. 2.5 mm <sup>2</sup>

##### Degrees of protection

IP 65 UL Type 5
-----------------

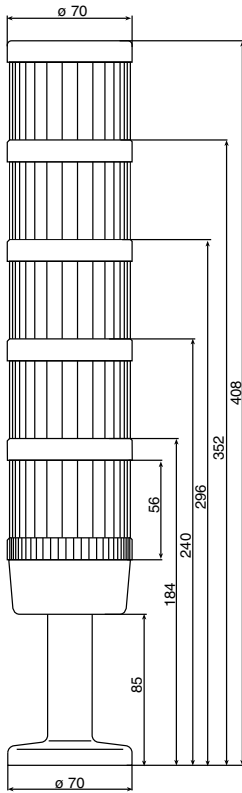
##### Electrical data

<b>Permanent light element</b>	
Operating voltage	max. 250 V
Bulb socket B 15 d, max 10 W	Bulb not included
<b>LED version:</b>	
<b>Permanent light</b>	24 V, AC/DC
Current consumption	45 mA
<b>Blinking light element</b>	24 V, AC/DC
Current consumption	25 mA
<b>Rotating light element</b>	24 V, AC/DC
Current consumption	70 mA
Starting current	< 0.5 A
<b>Flashing light element</b>	
Operating voltage	<u>24 V</u> <u>115 V</u> <u>230 V</u> AC/DC    AC        AC
Flash frequency	1 Hz    1 Hz    1 Hz
Flash energy	2 Ws    2 Ws    2 Ws
Life duration	4 x 10 <sup>6</sup> flashes
Current consumption	125 mA    20 mA    35 mA
Starting current	< 0.5 A    < 0.5 A    < 0.25 A
<b>Temperature</b>	
Ambient temperature during operations	-20 to +50 °C

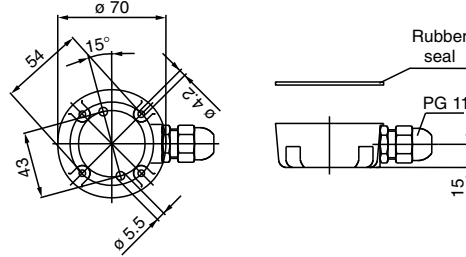
# Approximate dimensions and drilling plans Signal Towers/Signal Beacons

All dimensions in MM

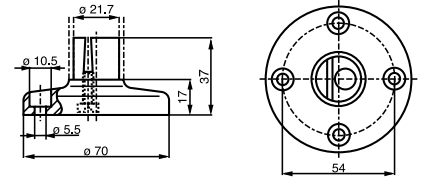
## Signal Towers K 70



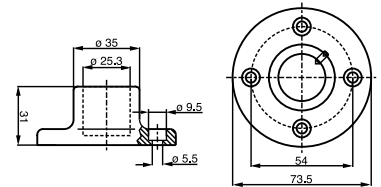
## Contact box for cable exit at side



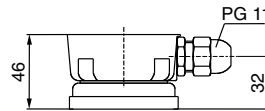
## Base for tube, plastic



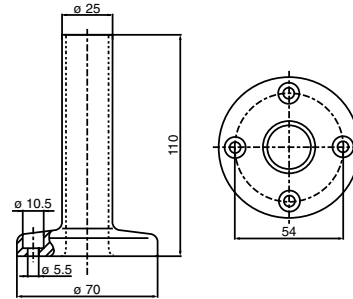
## Base for tube, metal



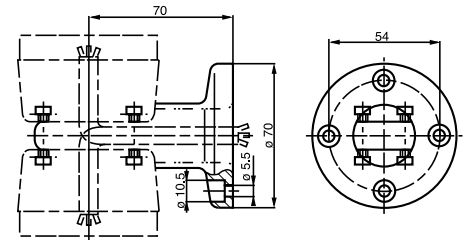
## Contact box with magnetic base



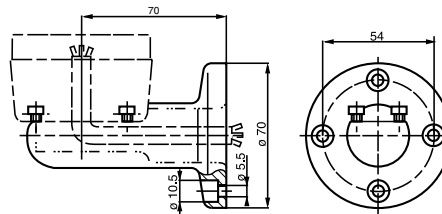
## Base with integrated tube



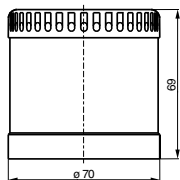
## Bracket 2-sided mounting



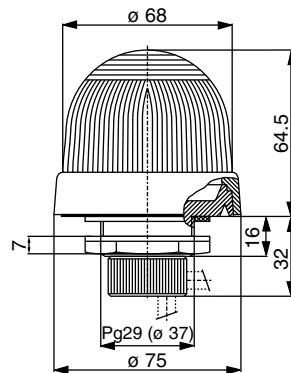
## Bracket 1-sided mounting



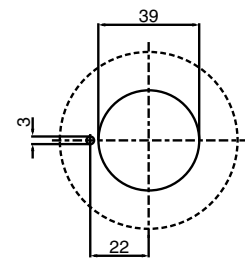
## Audible module



## Signal Beacons K SB



## Drilling plan for Signal Beacons KSB



## Drilling plan for Signal Towers K 70

