



CAM-KIT™

Security camera mounting kit. Universal bracket mounts to 3-1/2" and 4" round or octagon boxes and single-gang device boxes. Also fits FL430 CAM-LIGHT™ BOX.

New!

CATALOG NUMBER	UPC/DCI/NAED MFG #01 8997	UNIT PKG	STD PKG	DIM A	DIM B	DIM C	DIM D	DIM E	DIM F
SC5	18058	1	20	4.875	5.564	.703	5.375	.750	.718

Includes 5" plastic mounting plate, camera mounting bracket and mounting screws.

PATENTS PENDING.



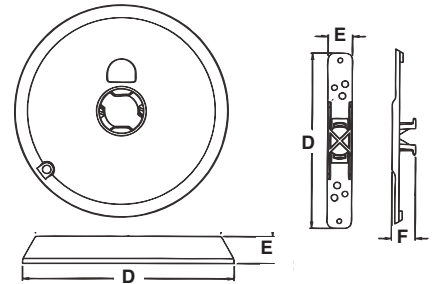
E253895 LR49636

Features and Benefits

- Fits any camera hole pattern.
- Low cost.
- Installs in less than two minutes.
- Installs cameras with a base diameter up to 4-1/2"

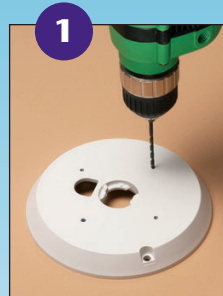


SC5

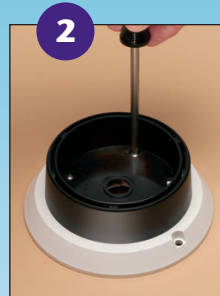


Installation Instructions - SC5 for Security Cameras

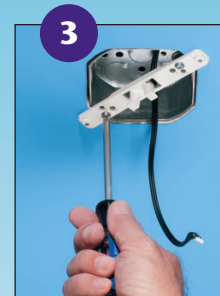
For a video installation demonstration visit our website @ aifittings.com



1 Use your camera base as a template and drill holes.



2 Attach camera to mounting plate (screws provided).



3 Mount the bracket to the existing box using screws provided.



4 With camera mounted, install the mounting plate to the box by placing it on the bracket and turning clockwise to lock. Install set screw.



Finished installation.