

BALDOR® • RELIANCE

Product Information Packet

VBL3510T

1HP,1725RPM,1PH,60HZ,143TC,3522LC,TEFC,F

Part Detail							
Revision:	D	Status:	PRD/A	Change #:		Proprietary:	No
Type:	AC	Prod. Type:	3522LC	Elec. Spec:	35WGN676	CD Diagram:	CD0055
Enclosure:	TEFC	Mfg Plant:		Mech. Spec:	35E692	Layout:	35LYE692
Frame:	143TC	Mounting:	F1	Poles:	04	Created Date:	01-14-2013
Base:	N	Rotation:	R	Insulation:	F	Eff. Date:	08-28-2015
Leads:	6#18					Replaced By:	
Literature:		Elec. Diagram:					

Nameplate NP1256L										
CAT.NO.	VBL3510T									
SPEC.	35E692N676G1									
HP	1									
VOLTS	115/230									
AMP	9/4.5									
RPM	1725									
FRAME	143TC				HZ	60			PH	1
SER.F.	1.15		CODE	K	DES	L		CLASS	F	
NEMA-NOM-EFF	76.5		PF	92						
RATING	40C AMB-CONT									
CC								USABLE AT 208V	5.5	
DE	6205			ODE	6203					
ENCL	TEFC		SN							

AC Induction Motor Performance Data

Record # 41128 - Typical performance - not guaranteed values

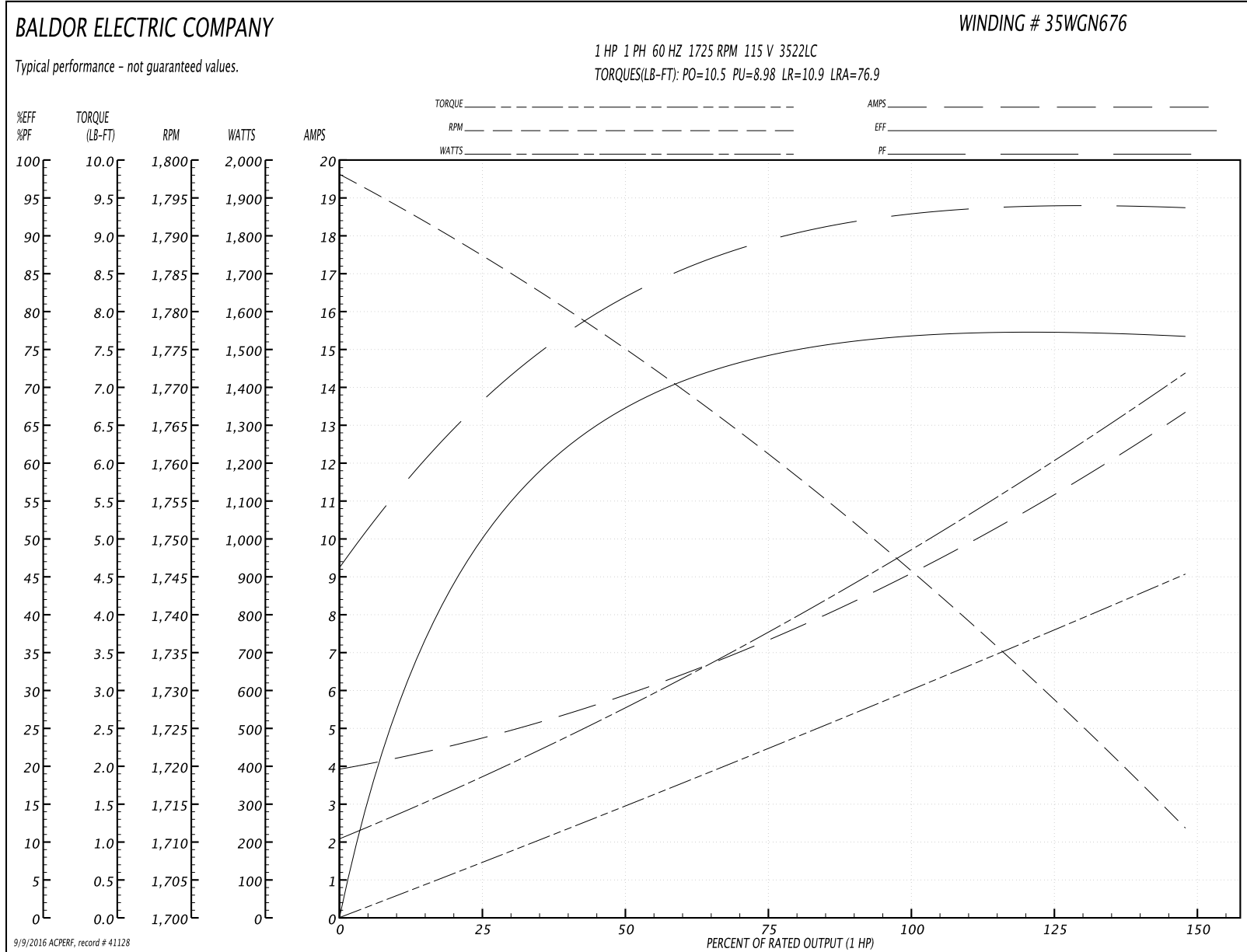
Winding: 35WGN676-R001	Type: 3522LC	Enclosure: TEFC
-------------------------------	---------------------	------------------------

Nameplate Data				115 V, 60 Hz: Low Voltage Connection	
Rated Output (HP)	1			Full Load Torque	2.94 LB-FT
Volts	115/230			Start Configuration	direct on line
Full Load Amps	9/4.5			Breakdown Torque	10.5 LB-FT
R.P.M.	1725			Pull-up Torque	8.98 LB-FT
Hz	60	Phase	1	Locked-rotor Torque	10.9 LB-FT
NEMA Design Code	L	KVA Code	K	Starting Current	76.9 A
Service Factor (S.F.)	1.15			No-load Current	4.04 A
NEMA Nom. Eff.	76.5	Power Factor	92	Line-line Res. @ 25°C	0.61441 Ω A Ph 1.4548 Ω B Ph
Rating - Duty	40C AMB-CONT			Temp. Rise @ Rated Load	65°C
S.F. Amps	10.2/5.1			Temp. Rise @ S.F. Load	73°C

Load Characteristics 115 V, 60 Hz, 1 HP

% of Rated Load	25	50	75	100	125	150	S.F.
Power Factor	69	82	88	92	94	94	93
Efficiency	48.6	66.1	73.5	77	77.6	76.5	77.4
Speed	1787	1775.7	1762.5	1747.7	1731.1	1711.1	1738
Line amperes	4.52	5.72	7.27	8.99	11	13.3	10.2

Performance Graph at 115V, 60Hz, 1.0HP Typical performance - Not guaranteed values



AC Induction Motor Performance Data

Record # 41129 - Typical performance - not guaranteed values

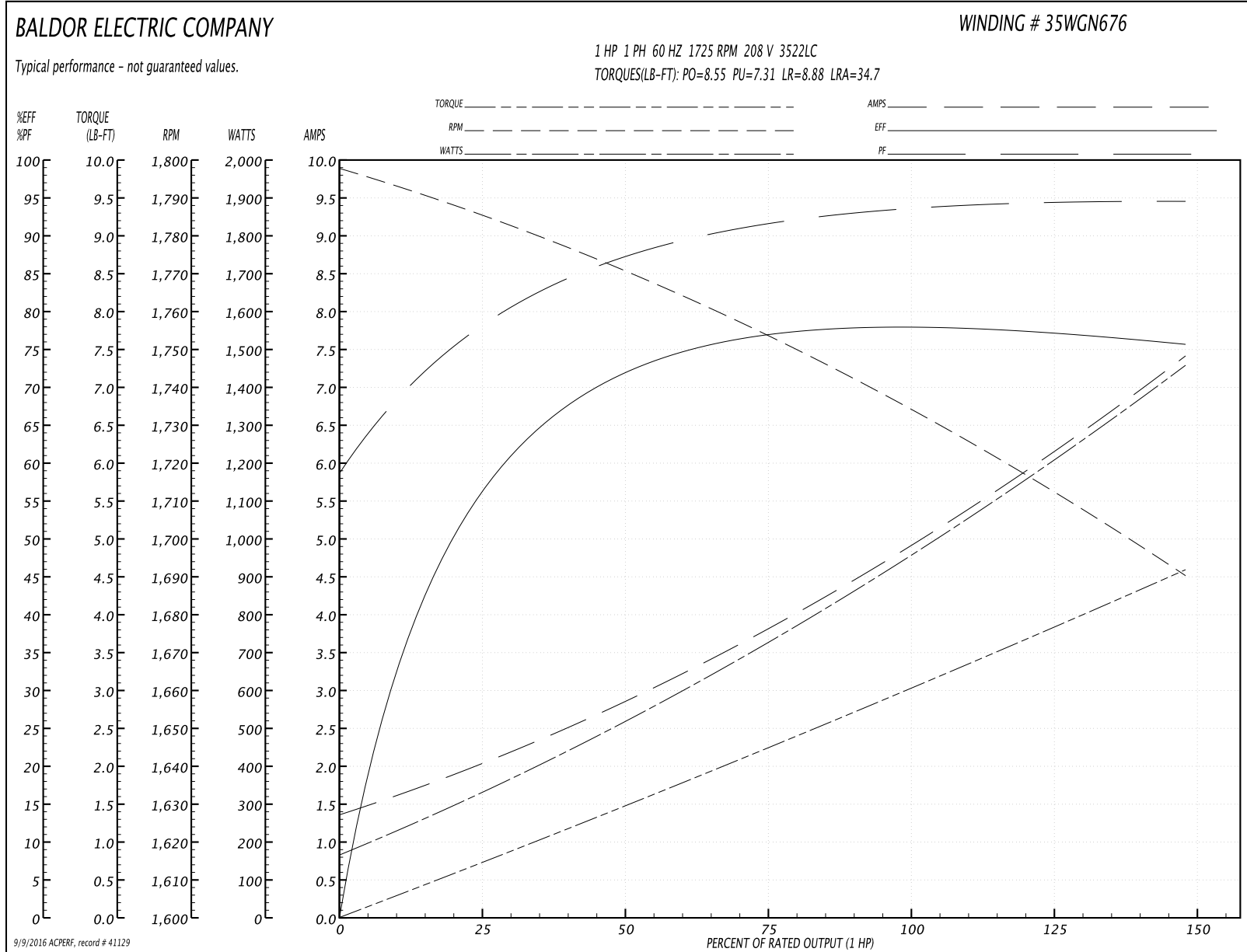
Winding: 35WGN676-R001	Type: 3522LC	Enclosure: TEFC
-------------------------------	---------------------	------------------------

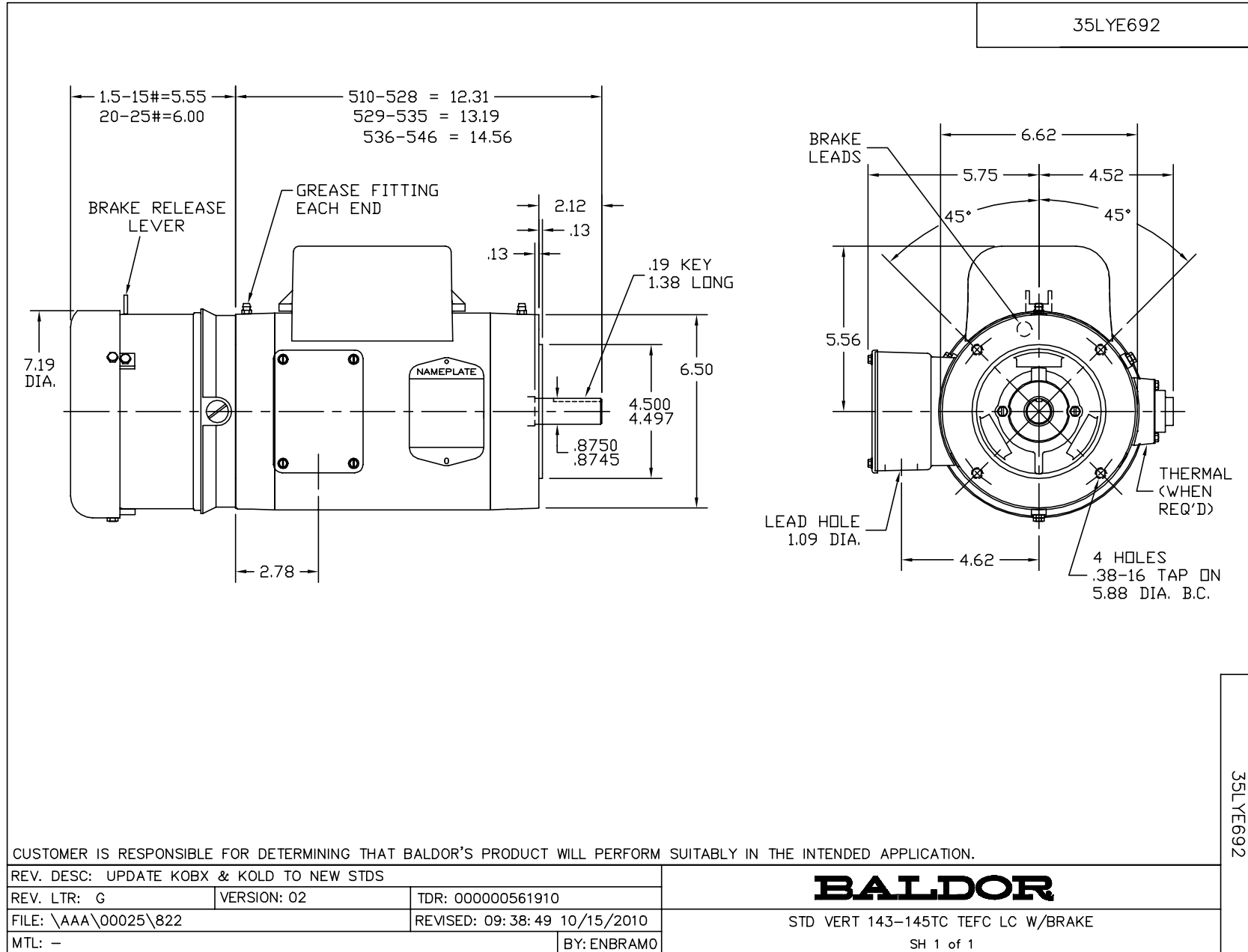
Nameplate Data				208 V, 60 Hz: High Voltage Connection	
Rated Output (HP)	1			Full Load Torque	2.95 LB-FT
Volts	115/230			Start Configuration	direct on line
Full Load Amps	9/4.5			Breakdown Torque	8.55 LB-FT
R.P.M.	1725			Pull-up Torque	7.31 LB-FT
Hz	60	Phase	1	Locked-rotor Torque	8.88 LB-FT
NEMA Design Code	L	KVA Code	K	Starting Current	34.7 A
Service Factor (S.F.)	1.15			No-load Current	1.335 A
NEMA Nom. Eff.	76.5	Power Factor	92	Line-line Res. @ 25°C	2.458 Ω A Ph 1.43 Ω B Ph
Rating - Duty	40C AMB-CONT			Temp. Rise @ Rated Load	69°C
S.F. Amps				Temp. Rise @ S.F. Load	81°C

Load Characteristics 208 V, 60 Hz, 1 HP

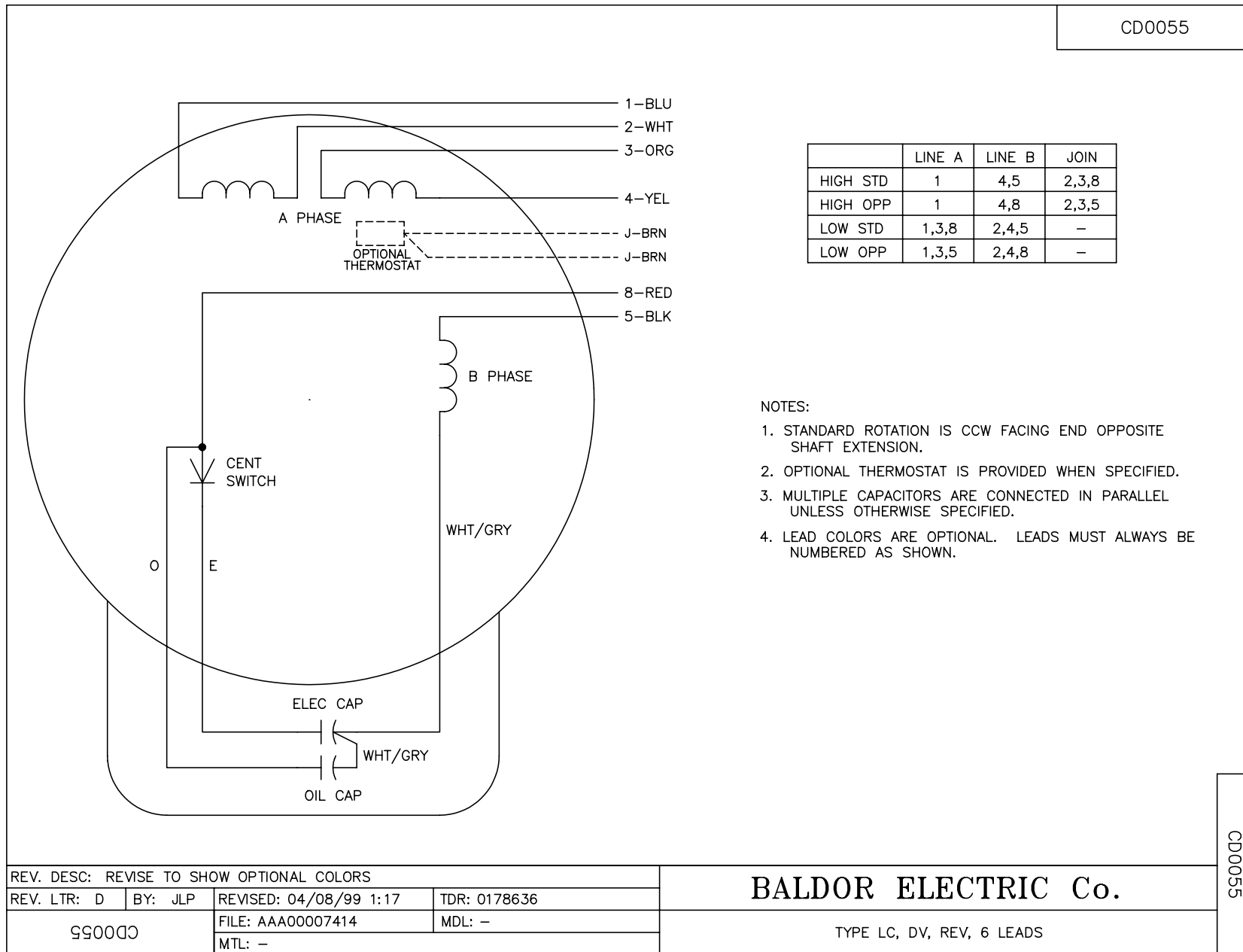
% of Rated Load	25	50	75	100	125	150	S.F.
Power Factor	77	87	91	94	94	95	94
Efficiency	54.2	70.8	76.2	78.4	77.9	75.4	78.1
Speed	1785	1771	1755	1737	1716	1689	1724
Line amperes	2.01	2.815	3.75	4.77	6	7.45	5.51

Performance Graph at 208V, 60Hz, 1.0HP Typical performance - Not guaranteed values





CD0055



NOTES:

1. STANDARD ROTATION IS CCW FACING END OPPOSITE SHAFT EXTENSION.
2. OPTIONAL THERMOSTAT IS PROVIDED WHEN SPECIFIED.
3. MULTIPLE CAPACITORS ARE CONNECTED IN PARALLEL UNLESS OTHERWISE SPECIFIED.
4. LEAD COLORS ARE OPTIONAL. LEADS MUST ALWAYS BE NUMBERED AS SHOWN.

CD0055

REV. DESC: REVISE TO SHOW OPTIONAL COLORS			
REV. LTR: D	BY: JLP	REVISED: 04/08/99 1:17	TDR: 0178636
990000		FILE: AAA00007414	MDL: -
		MTL: -	

BALDOR ELECTRIC Co.

TYPE LC, DV, REV, 6 LEADS