

BALDOR® • **RELIANCE**

Product Information Packet

UCM575

5-7 1/2HP,3450RPM,3PH,60HZ,184TZ,3628M,O

Part Detail							
Revision:	V	Status:	PRD/A	Change #:		Proprietary:	No
Type:	AC	Prod. Type:	3628M	Elec. Spec:	36WG2512	CD Diagram:	CD0005
Enclosure:	OPAO	Mfg Plant:		Mech. Spec:	36F551	Layout:	36LYF551
Frame:	184TZ	Mounting:	F1	Poles:	02	Created Date:	
Base:	RG	Rotation:	R	Insulation:	F	Eff. Date:	08-22-2016
Leads:	9#16 30" G Y					Replaced By:	
Literature:		Elec. Diagram:					

Nameplate NP1279L											
CAT.NO.	UCM575										
SPEC.	36F551-2512G1										
HP	5-7.5 AIR OVER										
VOLTS	230/460										
AMP	19/9.5										
RPM	3450										
FRAME	184TZ				HZ	60			PH	3	
SER.F.	1.00				CODE	F		DES	-	CL	F
NEMA-NOM-EFF	84				PF	87					
RATING	40C AMB-CONT										
CC								USABLE AT 208V	20.4		
DE	6206				ODE	6205					
ENCL	OPAO				SN						

Nameplate NP1263L	
CAT.NO.	UCM575
SPEC.	36F551-2512G1
HP	5-7.5 AIR OVER
VOLTS	230/460
AMP	19/9.5
RPM	3450
FRAME	184TZ
	HZ 60
	PH 3
SER.F.	1.00
	CODE F
	DES -
	CL F
NEMA-NOM-EFF	84
	PF 87
RATING	40C AMB-CONT
CC	USABLE AT 208V 20.4
DE	6206
	ODE 6205
ENCL	OPAO
	SN

AC Induction Motor Performance Data

Record # 36903 - Typical performance - not guaranteed values

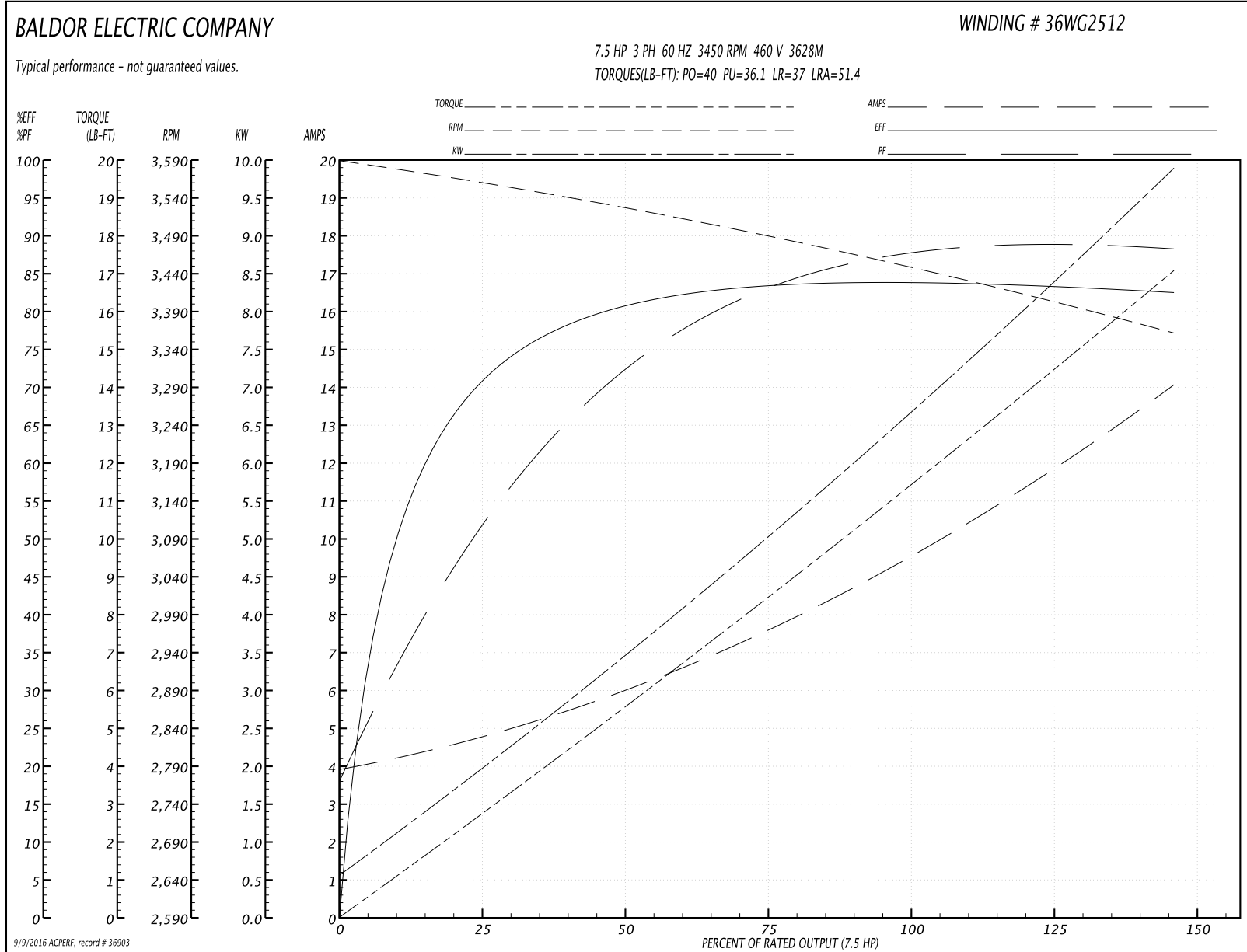
Winding: 36WG2512-R004	Type: 3628M	Enclosure: OPAO
-------------------------------	--------------------	------------------------

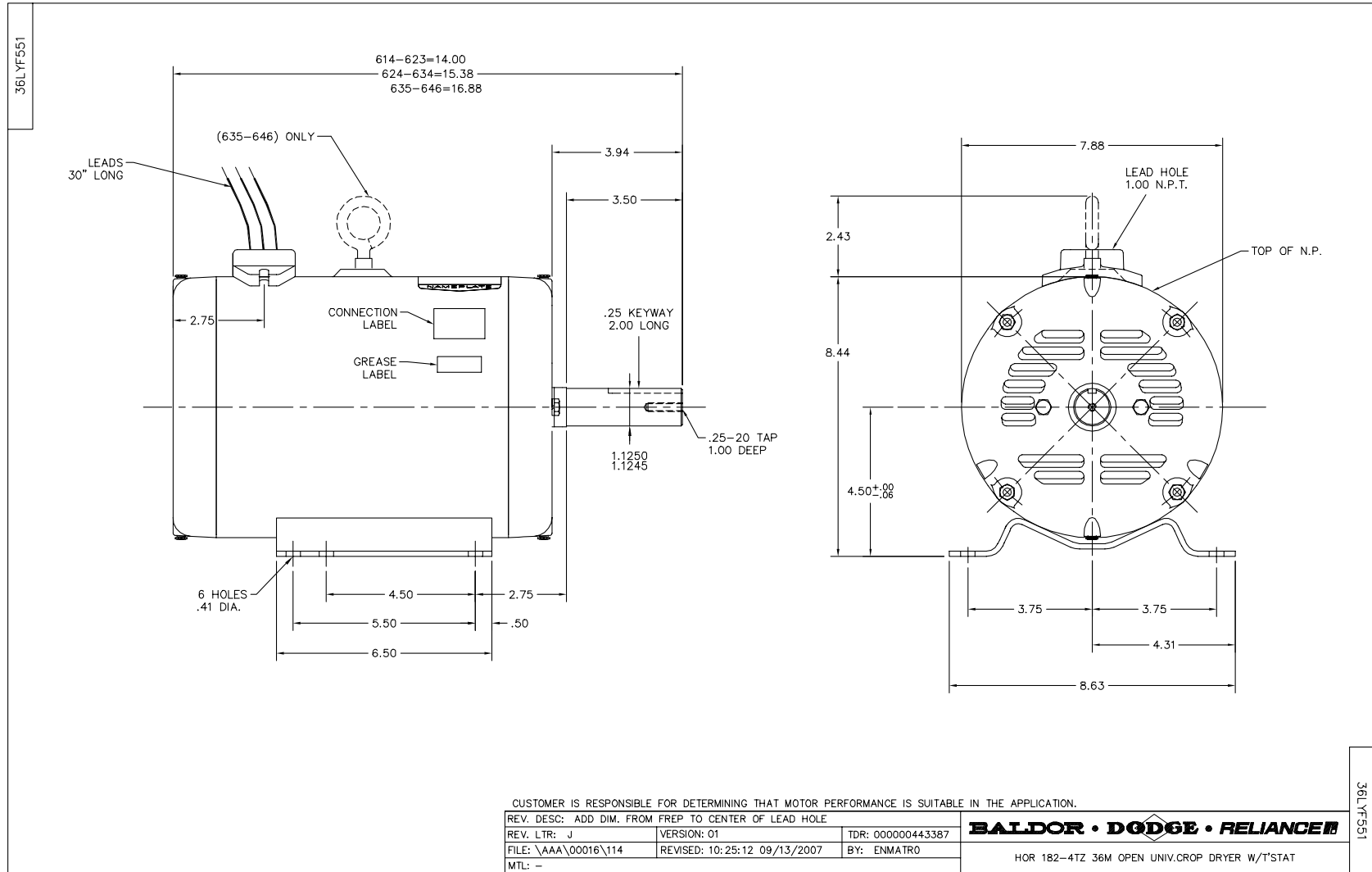
Nameplate Data				460 V, 60 Hz: High Voltage Connection	
Rated Output (HP)	5-7.5 AIR OVER			Full Load Torque	11.4 LB-FT
Volts	230/460			Start Configuration	direct on line
Full Load Amps	19/9.5			Breakdown Torque	40 LB-FT
R.P.M.	3450			Pull-up Torque	36.1 LB-FT
Hz	60	Phase	3	Locked-rotor Torque	37 LB-FT
NEMA Design Code	-	KVA Code	F	Starting Current	51.4 A
Service Factor (S.F.)	1			No-load Current	4 A
NEMA Nom. Eff.	84	Power Factor	87	Line-line Res. @ 25°C	2.17 Ω
Rating - Duty	40C AMB-CONT			Temp. Rise @ Rated Load	
				Rotor inertia	0.126 LB-FT ²

Load Characteristics 460 V, 60 Hz, 7.5 HP

% of Rated Load	25	50	75	100	125	150
Power Factor	54	74	83	87	88	89
Efficiency	70.7	80.5	83.4	84	83.9	82.2
Speed	3558	3526	3488	3450	3406	3361
Line amperes	4.68	6.02	7.68	9.55	11.8	14

Performance Graph at 460V, 60Hz, 7.5HP Typical performance - Not guaranteed values

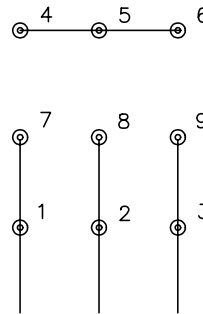




CD0005

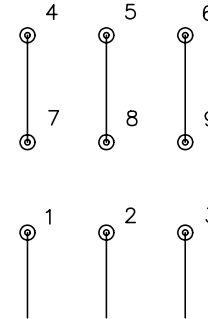


LOW VOLTAGE
(2Y)



LINE

HIGH VOLTAGE
(1Y)



LINE

NOTES:

1. INTERCHANGE ANY TWO LINE LEADS TO REVERSE ROTATION.
2. OPTIONAL THERMOSTATS ARE PROVIDED WHEN SPECIFIED.
3. ACTUAL NUMBER OF INTERNAL PARALLEL CIRCUITS MAY BE A MULTIPLE OF THOSE SHOWN ABOVE.
4. LEAD COLORS ARE OPTIONAL. LEADS MUST ALWAYS BE NUMBERED AS SHOWN.

REV. DESC: REVISE TO SHOW OPTIONAL COLORS			
REV. LTR: E	BY: JLP	REVISED: 01/19/99 10:15	TDR: 0171435
90000		FILE: AAA00005140	MDL: -
		MTL: -	

BALDOR ELECTRIC Co.

3PH, DV, 9 LEADS

CD0005