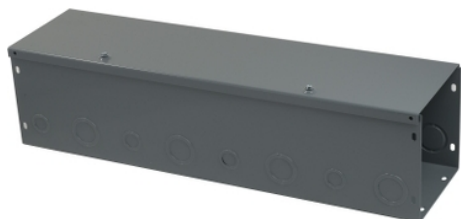


Product availability: Stock - Normally stocked in distribution facility



### Main

Product	Straight length
Range	SQUARE-Duct
Length	0.61 m (2 ft)
Cross Section	6 x 6 in
Enclosure Rating	NEMA 1
Enclosure Material	Steel 16 gauge with knock-outs
Finish	Grey polyester powder ANSI 49
Cover Type	Hinged cover
Certifications	CSA UL listed

### Ordering and shipping details

Category	01421 - LDB WIREWAY, NEMA 1
Discount Schedule	PE9
GTIN	00785901199915
Package weight(Lbs)	4.54 kg (10 lb(US))
Returnability	Yes
Country of origin	MX

### Offer Sustainability

REACH Regulation	<a href="#">REACH Declaration</a>
REACH free of SVHC	Yes
EU RoHS Directive	Pro-active compliance (Product out of EU RoHS legal scope) <a href="#">EU RoHS Declaration</a>
Toxic heavy metal free	Yes
Mercury free	Yes
RoHS exemption information	<a href="#">Yes</a>
China RoHS Regulation	<a href="#">China RoHS Declaration</a>

### Contractual warranty

Warranty	18 months
----------	-----------

The information provided in this documentation contains general descriptions and/or technical characteristics of the performance of the products contained herein. This documentation is not intended as a substitute for and is not to be used for determining suitability or reliability of these products for specific user applications. It is the duty of any such user or integrator to perform the appropriate and complete risk analysis, evaluation and testing of the products with respect to the relevant specific application or use thereof. Neither Schneider Electric Industries SAS nor any of its affiliates or subsidiaries shall be responsible or liable for misuse of the information contained herein.