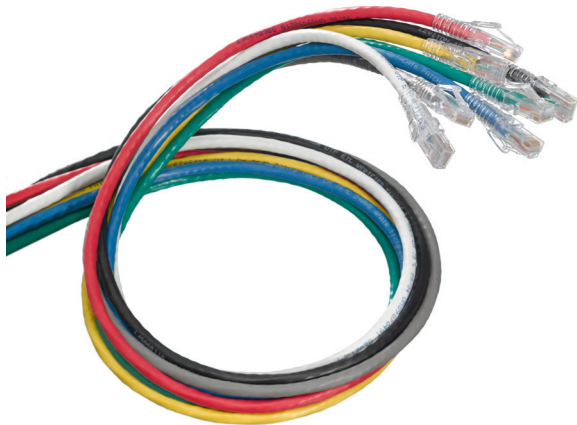


eXtreme® Cat 6 SlimLine Boot UTP Patch Cords

APPLICATION

eXtreme Cat 6 SlimLine Boot UTP Patch Cords feature a narrow profile to support traditional and high-density panels and switches. The snagless plug design makes the patch cords an excellent choice in environments where moves, adds, and changes are frequent.



SPECIFICATION

Patch cords shall meet or exceed requirements for Cat 6 performance described in ANSI/TIA-568-C.2. Patch cords shall be 24-gauge stranded conductor with an 8-position modular plug on each end. The cords shall include a narrow-profile boot that allows for easy cord removal without snagging. The cords shall be available in standard lengths of 3, 5, 7, 10, 15, and 20 feet. Patch cord plug shall be clear and contacts shall have industry-standard, ANSI/TIA-1096-A compliant 50 micro inches of gold plating.

COUNTRY OF ORIGIN

China

WARRANTY INFORMATION

Limited Product and Limited Extended Warranties are rendered VOID if the installed structured cabling system is used for PoE applications that exceed the product's specified power rating.

For a copy of Leviton product warranties, visit www.leviton.com/warranty.

Page 1 of 2

FEATURES

- Tested and verified by Intertek (ETL) to meet ANSI/TIA-568-C.2 component standards
- Improved plug access in tight spaces
- Snagless plug design with integrated strain-relief boot
- Stranded conductor for longer flex-life
- T568B wiring to function in either T568A or T568B applications
- All patch cords are backwards compatible with earlier ANSI/TIA category ratings
- Channel performance verified by third-party testing in 4-connector, 100-meter channel

DESIGN CONSIDERATIONS

- ANSI/TIA channel performance limits total length of patching and equipment cords to 32 feet (10 meters) per ANSI/TIA-568-C.2 or 88.6 feet (27 meters) in a MUTOA application
- A variety of colors for color coding or organization
- Available in six standard lengths (custom lengths available)

STANDARDS COMPLIANCE

- ANSI/TIA-568-C.2
- IEEE 802.3at and IEEE 802.3af requirements
- ANSI/TIA-1096-A (formerly FCC Part 68)
- cULus Listed
- ISO/IEC 11801
- RoHS
- UL 444 CM Rated
- IEEE 802.3at (Type 1) PoE up to 15.4 watts
- IEEE 802.3at (Type 2) PoE+ up to 30 watts
- IEEE Draft 802.3bt (Type 3) PoE+ up to 60 watts
- IEEE Draft 802.3bt (Type 4) PoE+ up to 100 watts - maximum bundle size of 100 cords
- Cisco Universal Power Over Ethernet (UPOE) up to 60 watts
- Power over HDBaseT™ (POH) up to 100 watts - maximum bundle size of 100 cords

PHYSICAL SPECIFICATIONS

Dimensions:	See page two
Outer Diameter (O.D.):	0.225"
Materials:	24-gauge, UTP stranded conductor, modular non-keyed, 8-position, 8-conductor plug, 94V-0 rated
Colors:	White, yellow, red, blue, green, grey, black

Leviton Network Solutions

2222 - 222nd St. SE
Bothell, WA 98021-4416

tel 1-800-824-3005
tel +1-425-486-2222
appeng@leviton.com
www.leviton.com

Asia / Pacific

T +1.631.812.6228
E infoasean@leviton.com

Europe

T +44.0.1592.772124
E customerservice@brand-rex.com

Canada

T +1.514.954.1840
E pcservice@leviton.com

India / SAARC

T +971.4.886.4722
E infoindia@leviton.com

Caribbean

T +1.954.593.1896
E infocaribbean@leviton.com

Mexico

T +52.55.5082.1040
E lsamarketing@leviton.com

China

T +852.2774.9876
E infochina@leviton.com

Middle East & Africa

T +971.4.886.4722
E lmeinfo@leviton.com

Colombia

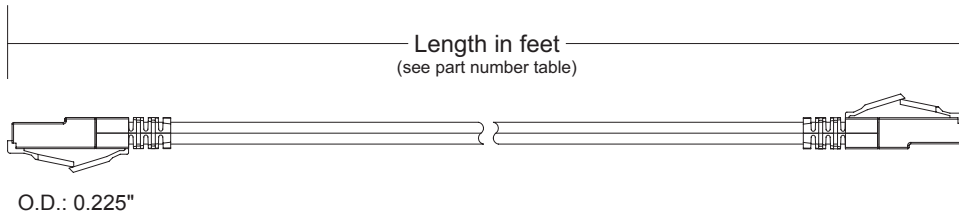
T +57.1.743.6045
E infocolombia@leviton.com

South Korea

T +82.2.3273.9963
E infokorea@leviton.com

ELECTRONIC FILES

For CAD files, typical specs, or technical drawings (.DXF, .DWG), visit www.leviton.com.



6D460-XXX

EXTREME® CAT 6 SLIMLINE BOOT UTP PATCH CORDS – STOCKED ITEMS

Description	White	Yellow	Red	Blue	Green	Grey	Black
Cat 6 SlimLine Boot UTP Patch Cord, 3 feet (0.9 m)	6D460-03W	6D460-03Y	6D460-03R	6D460-03L	6D460-03G	6D460-03S	6D460-03E
Cat 6 SlimLine Boot UTP Patch Cord, 5 feet (1.5 m)	6D460-05W	6D460-05Y	6D460-05R	6D460-05L	6D460-05G	6D460-05S	6D460-05E
Cat 6 SlimLine Boot UTP Patch Cord, 7 feet (2.1 m)	6D460-07W	6D460-07Y	6D460-07R	6D460-07L	6D460-07G	6D460-07S	6D460-07E
Cat 6 SlimLine Boot UTP Patch Cord, 10 feet (3.0 m)	6D460-10W	6D460-10Y	6D460-10R	6D460-10L	6D460-10G	6D460-10S	6D460-10E
Cat 6 SlimLine Boot UTP Patch Cord, 15 feet (4.6 m)	6D460-15W	6D460-15Y	6D460-15R	6D460-15L	6D460-15G	6D460-15S	6D460-15E
Cat 6 SlimLine Boot UTP Patch Cord, 20 feet (6.1 m)	6D460-20W	6D460-20Y	6D460-20R	6D460-20L	6D460-20G	6D460-20S	6D460-20E

NOTE: Other lengths are available by special order. Please contact customer service for more information.



For assistance customizing your patch cords, please visit www.leviton.com/configurator or call Tech Support at 800.824.3005.



Leviton Network Solutions 2222 - 222nd St. SE Bothell, WA 98021-4416	Asia / Pacific T +1.631.812.6228 E infoasean@leviton.com	Canada T +1.514.954.1840 E pcservice@leviton.com	Caribbean T +1.954.593.1896 E infocaribbean@leviton.com	China T +852.2774.9876 E infochina@leviton.com	Colombia T +57.1.743.6045 E infocolombia@leviton.com
tel 1-800-824-3005 tel +1-425-486-2222 appeng@leviton.com www.leviton.com	Europe T +44.0.1592.772124 E customerservice@brand-rex.com	India / SAARC T +971.4.886.4722 E infoindia@leviton.com	Mexico T +52.55.5082.1040 E lsamarketing@leviton.com	Middle East & Africa T +971.4.886.4722 E lmeinfo@leviton.com	South Korea T +82.2.3273.9963 E infokorea@leviton.com