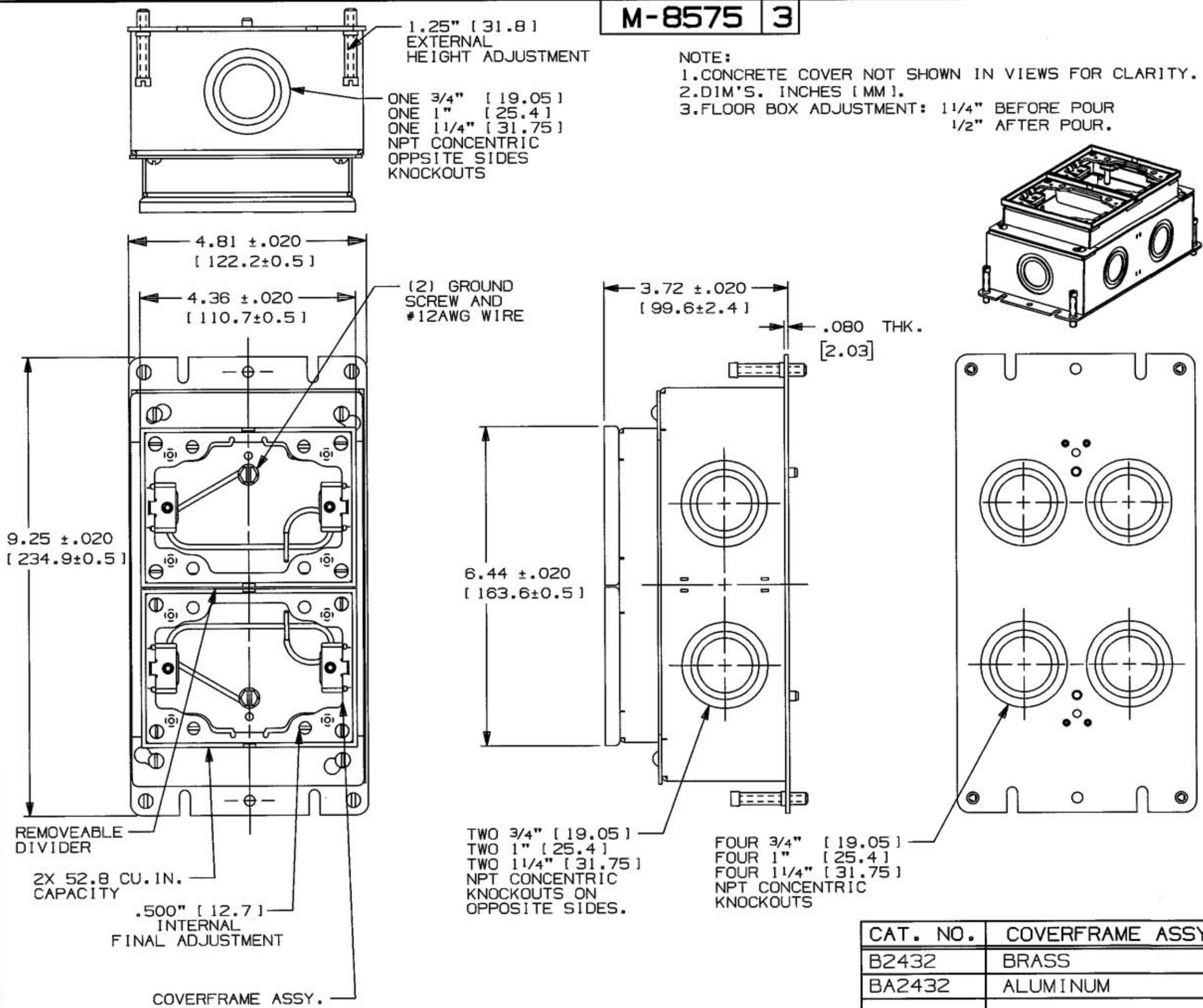


M-8575 3

NOTE:

1. CONCRETE COVER NOT SHOWN IN VIEWS FOR CLARITY.
2. DIM'S. INCHES [MM].
3. FLOOR BOX ADJUSTMENT: 1 1/4" BEFORE POUR
1/2" AFTER POUR.



LIST OF PARTS		
DESCRIPTION	MATERIAL	FINISH
BOX	STEEL .0625 THK	PRE-GALV.
ADJUSTING BASE	STEEL .0625 THK	PRE-GALV.
ADJUSTING COLLAR	STEEL .0625 THK	PRE-GALV.
BOX DIVIDER	STEEL .0625 THK	PRE-GALV.
COVERFRAME ASM	SEE TABLE	
LEVELING SCREW	STEEL	ZINC PL.
FL.HD. ADJ. SCREW	STEEL	ZINC PL.
RD.HD. MTG. SCREW	STEEL	ZINC PL.
FL.HD. MTG. SCREW	STEEL	ZINC PL.
GROUND SCREW & WIRE	12 AWG CU	INSULATED
CONCRETE COVER	.010 TINPLATE	

SYM	REVISIONS	APP	DATE
3	DIM 3.72 WAS 3.92 DCN#9375 PAC	TLS	3-26-02
2	CHANGE ALL KO'S TO FRACTIONS, ADD BACK VIEW, ADD NOTE 3. DCN 9086 GK/TS		11/16/01
1	INITIAL RELEASE #8865	TLS	8-9-01

THE DESIGN AND DIMENSIONS OF THE PRODUCT SHOWN ON THIS DRAWING ARE SUBJECT TO CHANGE WITHOUT NOTICE

TITLE 2 GANG DEEP STAMPED STEEL CONC.FLOOR BOX

CAT. NO.	COVERFRAME ASSY.
B2432	BRASS
BA2432	ALUMINUM

TOLERANCES UNLESS OTHERWISE SPECIFIED		WIRING DEVICE-KELLEMS HUBBELL INCORPORATED BRIDGEPORT, CT	
FRACTIONS	± 1/64	DR. BY PAC	APP. BY TLS
DECIMALS	± .005	TR. BY	SCALE HALF
ANGLES	± 2'	CHK'D BY TLS	DATE 8-9-01