

Carflex® One-Piece Liquidtight Fittings



Unique Design

The simple, one piece body design of the Carflex One Piece Liquidtight Nonmetallic Fitting requires no disassembly of components for installation. The system is so strong that there is no need for a compression nut.

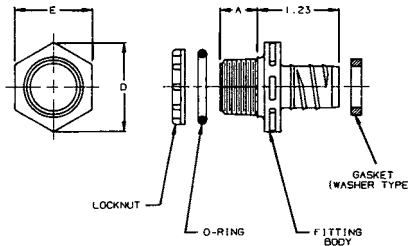
PVC Construction

PVC construction of the fitting and locknut provides unparalleled protection from water, oil and dust. Totally nonmetallic, the system is nonconductive and will not corrode or rust. Temperatures up to 140°F (60°C)

Features

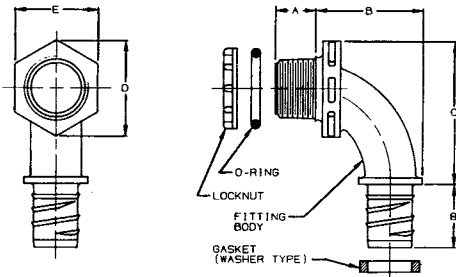
- Approved for indoor and outdoor locations
- Listed for "Wet Locations"

Straight Fittings



Part No.	Trade Size (in.)	Std. Ctn. Qty.	Std. Ctn. Wt. (lbs.)	A (inches)	D (inches)	E (inches)
LN43DA	1/2 - 14 NPT	100	2.8	0.56	1.34	1.19
LN43EA	3/4 - 14 NPT	50	2.2	0.56	1.63	1.44
LN43FA	1 - 11 1/2 NPT	25	3	0.69	1.99	1.75
LN43FA-CAR	1 - 11 1/2 NPT	15	1	0.69	1.99	1.75

90° Fittings



Part No.	Trade Size (in.)	Std. Ctn. Qty.	Std. Ctn. Wt. (lbs.)	Thread Size	A (inches)	B (inches)	C (inches)	D (inches)	E (inches)
LN20DA	1/2 - 14 NPT	100	4.3	1/2-14 NPT	0.56	1.50	1.99	1.34	1.19
LN20EA	3/4 - 14 NPT	50	3.1	3/4-14 NPT	0.56	1.73	2.25	1.63	1.44
LN20FA	1 - 11 1/2 NPT	25	3.2	1-11 1/2 NPT	0.69	1.86	2.58	1.99	1.75
LN20FA-CAR	1 - 11 1/2 NPT	10	1	1-11 1/2 NPT	0.69	1.86	2.58	1.99	1.75