

## For FS and FD Cast Device Boxes

### Application:

WP plugs and DS receptacles are used:

- wherever dust, dirt, moisture and corrosion are a problem
- outdoors or in locations where frequent washdowns occur, as in dairies and food processing plants

### Features:

DS receptacle housings are used:

- with FS and FD cast device boxes, either surface mounted or installed flush in a wall
- with single gang, two gang tandem and multiple gang boxes having individual cover openings
- a threaded cap which effectively seals housing when not in use

WP plugs include:

- a molded Neoprene hood with integral sleeve to seal the cord entrance
- an aluminum ring which clamps the hood to receptacle housing face, to complete watertight seal when plug is in use

### Standard Materials:

- Receptacle housings: body – *Feraloy*<sup>®</sup> iron alloy cap – copper-free aluminum
- Plug exteriors: hood – Neoprene; fastening ring – copper-free aluminum

### Standard Finishes:

- *Feraloy* iron alloy – electrogalvanized and aluminum acrylic paint
- Copper-free aluminum – natural
- Neoprene – natural (black or yellow)

### Electrical Rating Ranges:

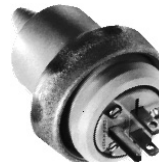
- 15 amperes, 125 volts
- 20 amperes, 125, 250 volts

### Certifications and Compliances:

- UL Standards: 498; 514A
- NEMA/EEMAC: WD-1; WD-5
- CSA Standard: C22.2 No. 42\*



DS Receptacle housings



WP Plugs



CC Replacement receptacle

### Grounding Type Receptacles For Plugs with U shaped or Round Grounding Contacts

Rating	Cover With Recept. Cat. #	Diagram	Style	Plug Cat. #	Diagram	Cord Dia.	Repl. Recept. Cat. #
15 amps 125 volts	DS96*		2-wire, 3-pole†	WP820		.500 to .625	CC55
		NEMA: 5-15R			NEMA: 5-15P		
20 amps, 125 volts	DS222		2-wire, 3-pole†	WP832		.500 to .625	CC71
		NEMA: 5-20R			NEMA: 5-20P		
20 amps, 250 volts	DS290		2-wire, 3-pole†	WP930		.500 to .625	CC90
		NEMA: 6-20R			NEMA: 6-20P		

NOTE: For listing of typical FS cast devices boxes, see pages 22 and 23

† Third pole grounded.

\* Compliance.

For FS and FD Condulet® Cast Device Boxes  
Single Gang



Blank cover for enclosing splices and taps where device not used

Description	Material	Cat. #
Surface	Sheet aluminum	DS100
Flush	Sheet steel	DSS100

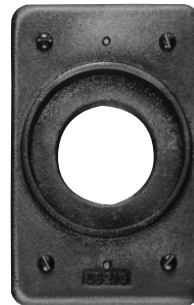


Blank cover with gasket for enclosing splices and taps where device not used

Description	Material	Cat. #
Surface or flush	Cast aluminum	DS100G



DS21



DS21G

For standard and 3-pole, 2-wire grounding type round flush receptacles. Opening diameter 1 7/16".

Description	Material	Cat. #
Surface	Sheet steel	DS21
Surface	Sheet aluminum	DS21-SA
Surface or flush	Feraloy® iron alloy with gasket	DS21G



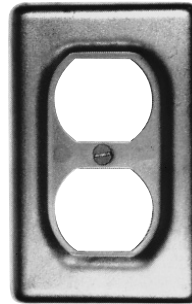
For GFI receptacles.

Description	Material	Cat. #
Surface	Sheet steel	DS23-GFI



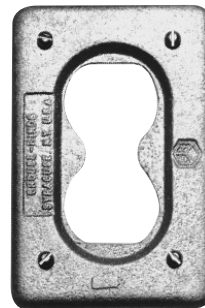
For flush plug receptacle requiring 1 5/8" opening diameter.

Description	Material	Cat. #
Surface	Sheet steel	DS35



For duplex convenience receptacles.

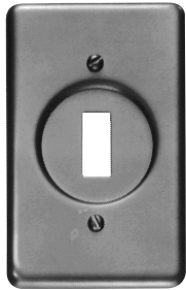
Description	Material	Cat. #
Surface	Sheet steel	DS23
Surface	Sheet aluminum	DS23-SA
Flush	Sheet steel	DSS23



For standard and 3-pole, 2-wire grounding type duplex convenience receptacles. Gasket included.

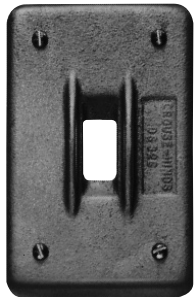
Description	Material	Cat. #
Surface or flush	Feraloy® iron alloy	DS23G

## For FS and FD Condulet® Cast Device Boxes Single Gang



For square handle general use snap or toggle switches – unguarded.

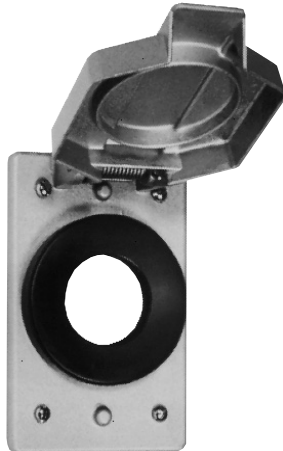
Description	Material	Cat. #
Surface	Sheet steel	DS32
Surface	Sheet aluminum	DS32-SA



For square handle general use snap or toggle switches – guarded.

Description	Material	Cat. #
Surface or flush	Feraloy® iron alloy with gasket	DS32G
Surface	Sheet steel	DS52

### WLRS and WLRD Wet Locations Covers† For NEMA Configuration Receptacles\*



For single convenience receptacles  
Spring door with gasket  
WLRS-1 cover takes 15 and 20 ampere non-locking type and 15 ampere locking type receptacles\*

WLRS-2 cover takes 20 ampere locking type receptacles\*

Description	Material	Cat. #
Surface	Die cast aluminum	WLRS-1 WLRS-2

Use WLRA-1 adapter for mounting on flush device boxes



For duplex convenience receptacles\*  
Spring doors with gasket  
WLRD-1 cover takes 15 and 20 ampere non-locking type and 15 ampere locking type receptacles\*

Description	Material	Cat. #
Surface	Die cast aluminum	WLRD-1

Use WLRA-1 adapter for mounting on flush device boxes.

### Flush Device Adapter



Adapter plate for mounting WLRS/WLRD covers to flush device boxes.

Cat. #  
WLRA-1

Also can be used to mount all covers with four corner screws listed on pages 35 to 42 to flush device boxes.

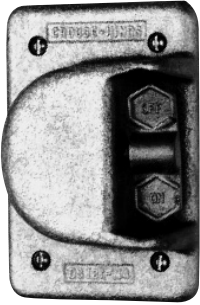
† Must be used with a wet locations rated wiring device.

\* Refer to pages 37 and 38 for receptacle specifications and listings of complete receptacle/cover combinations.

# 3F Raintight Covers (Gasket Included)

## For FS and FD Condulet® Cast Device Boxes Single Gang

Cast Device Boxes  
**3F**



For general use snap switches. Includes gasket.

Description	Material	Cat. #
For standard ON-OFF operation	Copper-free aluminum	DS181



For general use snap switches. Includes gasket.

Description	Material	Cat. #
For standard ON-OFF operation. With hole for lock	Die cast aluminum	DS185



For general use snap switches. Includes gasket.

Description	Material	Cat. #
For standard operation. Marked ON-OFF handle	Cast aluminum	DS128

# Switches and Motor Control Push Button Covers

Raintight

3F

For FS and FD Condulet® Cast Device Boxes  
Single Gang



For manual motor starting switches. Fits FS and FD boxes. Takes Westinghouse switches MST01 (1-pole) and MST02 (2-pole). Includes gasket.

Description	Material	Cat. #
For standard ON-OFF operation	Feraloy iron alloy	DS199



Furnished with buttons for operating motor control push button switches. Includes gasket.

Description	Push Buttons			
	No.	Color	Material	Cat. #
Button (normally open) marked START	1	Green	Feraloy iron alloy	DS171F
Button (normally closed) marked STOP	1	Red	Feraloy iron alloy	DS171G
Button (normally open) marked START	1	Green	Feraloy iron alloy	DS171
Button (normally closed) marked STOP	1	Red		

Description	No.	Color	Material	Cat. #
Two push button	2	Black	Feraloy iron alloy	DS171J

NOTE: Markings other than shown can be supplied. Standard markings available are as follows:

HAND	CLOSE	OFF	AUTO.	UP	RUN
EMER.	DOWN	JOG	FORWARD	START	RESET
REVERSE	STOP	TRIP	OPEN	ON	TEST
LGT. ON					



Heavy duty motor control push button switch

No. of Buttons	Normal Positions		Cat. #
1	1 circuit universal		ED11
2	2 circuits universal		ED12

DS Covers use the switches shown in the list below.

Cover	Takes Switch	Cover	Takes Switch
DS171	ED12	DS171F	ED11
DS171G	ED11	DS266	ED12
DS265	ED11		

3F Cast Device Boxes

# 3F Covers, Gaskets, Pilot Lights, Adapters

For FS and FD Condulet® Cast Device Boxes  
Single Gang

Cast Device Boxes  
**3F**



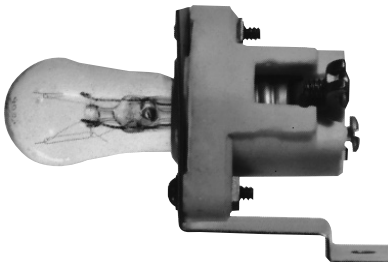
For pilot light units (furnished with jewels)

Description	Material	Jewel Color	Cat. #
Surface	Sheet steel	Red	DS24



For pilot light units (furnished with jewel and gasket).

Description	Material	Jewel Color	Cat. #
Surface or flush	Feraloy iron alloy	Red	DS24G



Pilot light unit (without transformer)

Circuit Voltage	Lamp Base	Watts	Cat. #
110	Candelabra	6	C3310



Pilot light (with transformer) †, FD only

Circuit Voltage	Lamp Base	Watts	Cat. #
440	Candelabra	6	C333



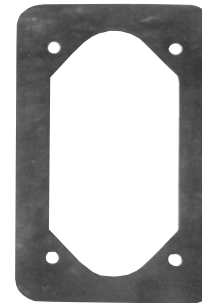
EXF Extensions (takes covers and flush rectangular wiring devices, or plug receptacles with housings)

Ext. Depth	Cat. #
1	EXF11
2½	EXF21



FS Flush mounting adapter (can be used with multi-gang bodies having individual cover openings. Furnished with gasket and screws)

Mtg. Style	Cat. #
Wall	FS031



Gaskets for use between device boxes and covers.

Material	Cat. #
Neoprene	GASK91 ‡

† Transformer 50-60 cycle, 440/110 volts.

‡ Not recommended as watertight.