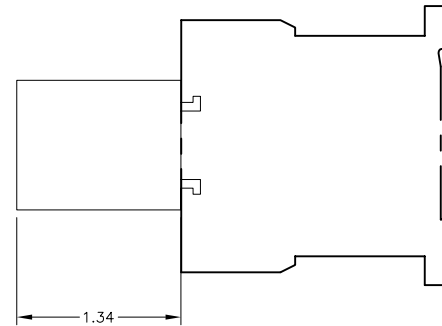
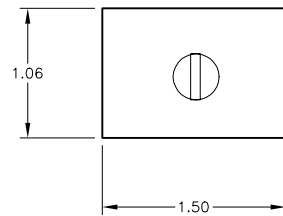


CODE (1)	CONTACTS	TIMING RANGE	TYPE	VOLTAGE (V)
2E	SPDT	1 TO 30 SEC.	ON-DELAY	24 TO 48V a.c. OR d.c.
2U	SPDT	1 TO 30 SEC.	ON-DELAY	110 TO 240V a.c.

Relay outputs, with single pole double throw contact, 240V ac/dc, 2 A maximum  
Control voltage, from 0.85 to 1.1 Uc.  
Maximum switching capacity 250 VA / 150 W  
Operating temperature: -10 to +60 C (14 to 140 F)  
Reset time: 1.5 s during time delay, 0.5 after time delay

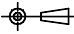
Direct mounting on the mini-contactor




Catalog Number: LA2 KT(1)  
Ratings: SEE CHART  
UL File/Guide: -  
CSA File/Guide: -  
Meets Standards: -  
Weight: -  
Wire Size: SEE CHART  
Terminal torque: -  
Mounting Hwd.: CLIP-ON FRONT MOUNTING

"THE SQUARE D COMPANY HAS PROPRIETARY RIGHTS TO THE INFORMATION CONTAINED HEREON. THIS INFORMATION REMAINS THE PROPERTY OF SQUARE D COMPANY AND MAY BE USED ONLY IN CONFORMANCE WITH INSTRUCTIONS ISSUED BY SQUARE D COMPANY. USER SHOULD VERIFY DRAWINGS ARE TO THE LATEST/CURRENT REVISION PRIOR TO INCORPORATING IN A DESIGN FILE."

**DO NOT SCALE DRAWING**  
UNLESS OTHERWISE SPECIFIED DIMENSIONS ARE IN INCHES

THIRD ANGLE PROJECTION   
**TOLERANCES**  
UNLESS OTHERWISE SPECIFIED  
2 PLACE DECIMALS ± .01

IEC AUX TIME DELAY BLOCK (K-LINE)  
LA2 KT(1)

 **SQUARE D COMPANY**

DWG# E0211101-01  
NO.