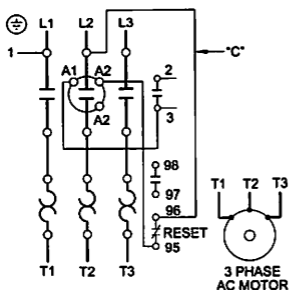
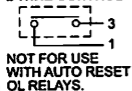


# A-C FULL VOLTAGE MAGNETIC STARTER



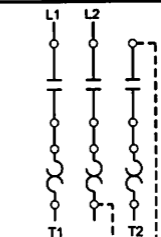
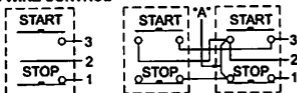
REMOTE PILOT DEVICES

## 2 WIRE CONTROL



WHEN MORE THAN ONE PUSHBUTTON STATION IS USED OMIT CONNECTOR "A" AND CONNECT PER SKETCH BELOW

## 3 WIRE CONTROL



FIELD CONVERSION TO 1 PHASE - ADD DOTTED CONNECTION

1 PHASE AC MOTOR

## SEPARATE CONTROL

REMOVE WIRE "C" WHEN IT IS SUPPLIED. CONNECT SEPARATE CONTROL LINES TO THE NO. 1 TERMINAL ON THE REMOTE PILOT DEVICE AND TERMINAL 96 ON THE OVERLOAD RELAY.

Short Circuit Withstand  
5000A ms, 600VAC

## POWER TERMINALS

Use 75° Copper Wire Only

### LINE TERMINALS

Torque to 15 LB-in

### LOAD TERMINALS

Refer to Overload Relay Setting Publication for Torque Ratings

## AUXILIARY CONTACTS

### SIDE MOUNTED

CATALOG No.	Contacts
C320KGS1	N.O.
C320KGS2	N.C.
C320KGS3	N.O. - N.C.
C320KGS4	2 N.O.
C320KGS5	2 N.C.
C320KGS6	N.O. - N.C. (I.)
C320KGS7	N.O. (E.C.) - N.C. (L.O.)
C320KGS8	N.C. (I.)

## CONTROL CIRCUIT FUSEHOLDER KIT

CATALOG No.	Fuse Type
C320FBR	Class CC

## RENEWAL PATRS

Magnet Coil - Specify the Number Stamped on Coil.

## PNEUMATIC TIMERS

CATALOG No.	Timing Range
C320TP1	0.3 to 10 Sec.
C320TP2	10 to 180 Sec.

## AUXILIARY CONTACTS

### TOP MOUNTED

CATALOG No.	Contacts
C320KGT1	N.O.
C320KGT2	N.C.
C320KGT3	N.O. - N.C.
C320KGT4	2 N.O.
C320KGT5	2 N.C.
C320KGT6	N.O. - N.C. (I.)
C320KGT7	N.O. (E.C.) - N.C. (L.O.)
C320KGT8	N.C. (I.)
C320KGT9	3 N.O.
C320KGT10	2 N.O. - 1 N.C.
C320KGT11	1 N.O. - 2 N.C.
C320KGT12	3 N.C.
C320KGT13	4 N.O.
C320KGT14	3 N.O. - 1 N.C.
C320KGT15	2 N.O. - 2 N.C.
C320KGT16	1 N.O. - 3 N.C.
C320KGT17	4 N.C.
C320KGT18	3 N.O. - 1 N.C. (I.)
C320KGT19	2 N.O. - 1 N.C. (I.) - 1 N.C.
C320KGT20	2 N.O. - 1 N.C. (E.C.) - 1 N.C. (L.O.)

**E.T.N**