

CH Main Breakers



CH Main Breaker



CH Main Breaker Loadcenter

Product Description

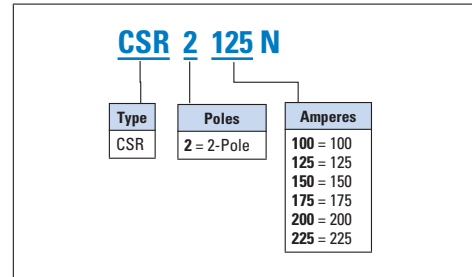
The main circuit breaker protects the entire loadcenter. It can also be used as a service disconnect. The main breaker delivers electricity to the branch circuit breakers within the loadcenter. It is either factory installed or sold separately depending on the model and application.

Features, Functions and Benefits

- ✓ Full range from 100 to 225 amperes, 120/240 volts.
- ✓ 25 kAIC, 42 kAIC and 100 kAIC available.
- ✓ Approved for service entrance.
- ✓ Include line lugs only as standard.
- ✓ 15-year warranty.
- ✓ Meet UL 489, CSA, NEMA standards, Federal Spec Classification W-C 375 b/ GEN.

Catalog Numbering System

TABLE 1-46. CATALOG NUMBERING SYSTEM



Data Tables

TABLE 1-47. TYPE CSR CIRCUIT BREAKERS 120/240 VAC — 25 kAIC FOR USE IN TYPE ECB UNIT ENCLOSURES

Ampere Rating	Wire Size Range Cu/Al for Line Terminals	Number of Poles	Catalog Number	UPC Code
25 kAIC				
100	#2 – 300 kcmil	2	CSR2100	782116061112
125			CSR2125N	782114019733
150			CSR2150N	782113098449
175			CSR2175N	782113098456
200			CSR2200N	782113098463
225			CSR2225N	782114106242

Accessories

TABLE 1-48. SHUNT TRIPS, AUXILIARY, ALARM CONTACTS

Description		Catalog Number
Type	Volts	Suffix Adder ①
Shunt Trip		
CSR	12	SR12
CSR	24	SR24
CSR	120	SR01
Auxiliary Contact		
CSR (1) NO and (1) NC	—	AL1
CSR (2) NO and (2) NC	—	AL2
Alarm Contact		
CSR	—	CR1

① Add suffix indicated to end of breaker catalog number.

TABLE 1-49. CSR LUG TREE KIT FOR REPLACEMENT PURPOSES ONLY FOR USE IN TYPE ECB UNIT ENCLOSURES

Ampere Rating	Description	Wire Size Range Cu/Al for Line Terminals	Catalog Number	UPC Code
225	For use on 125, 150, 175, 200 and 225 Ampere CSR Breakers	#2 – 300 kcmil	MCBK225	782114110591

Related Products

TABLE 1-50. TYPE CC CIRCUIT BREAKERS 240 VAC — 10 kAIC FOR USE IN TYPE ECC UNIT ENCLOSURES

Ampere Rating	Wire Size Range Cu/Al 60°C or 75°C for Line Terminals	Catalog Number			
		Type CC 10 kAIC	UPC Code	Type CC Hi Mag 10 kAIC	UPC Code
2-Pole					
100	#4 – 4/0	CC2100	782113386546	CC2100HM	782113828589
125		CC2125	782113266565	CC2125HM	782113828596
150		CC2150	782113266572	CC2150HM	782113828602
175	#2/0 – 300 kcmil	CC2175	782113266589	CC2175HM	782113828619
200		CC2200	782113266596	CC2200HM	782113828626
225		CC2225	782113266602	CC2225HM	782113828633
3-Pole					
100	#4 – 4/0	CC3100	782113386553	CC3100HM	782113828640
125		CC3125	782113266619	CC3125HM	782113828657
150		CC3150	782113266626	CC3150HM	782113828664
175	#2/0 – 300 kcmil	CC3175	782113266633	CC3175HM	782113828671
200		CC3200	782113266640	CC3200HM	782113828688
225		CC3225	782113266657	CC3225HM	782113828695

TABLE 1-51. SHUNT TRIPS, AUXILIARY AND ALARM CONTACTS

Description		Catalog Number
Type	Volts	Suffix Adder ②
Shunt Trip		
CC	12 dc	SR12
CC	24 dc	SR24
CC	120 ac	SR01
CC	208 ac	SR08
CC	240 ac	SR02
Auxiliary Contact		
CC (1) NO and (1) NC	—	AL1
Alarm Contact		
CSR	—	CR1

② Add suffix indicated to end of breaker catalog number.



BR Main Breakers



BR Main Breaker



BR Main Breaker Loadcenter

Product Description

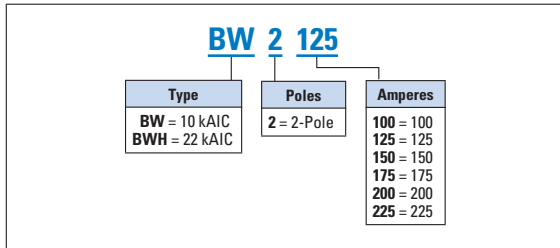
The main circuit breaker protects the entire loadcenter. It can also be used as a service disconnect. The main breaker delivers electricity to the branch circuit breakers within the loadcenter. It is either factory installed or sold separately depending on the model and application.

Features, Functions and Benefits

- ✓ Full range from 125 to 225 amperes, 120/240 volts.
- ✓ 10 kAIC and 25 kAIC available.
- ✓ Approved for service entrance.
- ✓ Five-year warranty.
- ✓ Meet UL 489, CSA, NEMA standards, Federal Spec Classification W-C 375 b/GEN.

Catalog Numbering System

TABLE 1-52. CATALOG NUMBERING SYSTEM



Note: All packaged quantities or single units.

Data Tables

TABLE 1-53. TYPES BW AND BWH CIRCUIT BREAKERS 120/240 VAC — 25 kAIC FOR USE IN TYPE ECB UNIT ENCLOSURES

Ampere Rating	Number of Poles	Wire Size Range Cu/Al 60°C or 75°C for Line Terminals	Catalog Number	UPC Code
10,000 AIC				
100	2	#2 – 300 kcmil	BW2100	782116061099
125			BW2125	786676460361
150			BW2150	786676460408
175			BW2175	786676460507
200			BW2200	786676460552
225			BW2225	786679122556
25,000 AIC				
100	2	#2 – 300 kcmil	BWH2100	782116061105
125			BWH2125	786676460439
150			BWH2150	786676460453
175			BWH2175	786676449700
200			BWH2200	786676460606
225			BWH2225	786679122563

Accessories

TABLE 1-54. SHUNT TRIPS, AUXILIARY AND ALARM CONTACTS

Description	Catalog Number Suffix Adder ^①
Shunt Trip for Types BW/BWH	
12 Volts	SR12
24 Volts	SR24
120 Volts	SR01
Auxiliary Contact for Types BW/BWH	
(1) NO and (1) NC	AL1
(2) NO and (2) NC	AL2
Alarm Contacts for Types BW/BWH	
Types BW/BWH	CR1
Alarm Contacts for Type GFCB (1-Pole)	
Alarm Contact for GFCB (1-Pole)	W1
(1) NO and (1) NC	W2

^① Add suffix indicated to end of breaker catalog number.

TABLE 1-55. BW/BWH LUG TREE KIT FOR REPLACEMENT PURPOSES ONLY FOR USE IN TYPE ECB UNIT ENCLOSURES

Ampere Rating	Description	Wire Size Range Cu/Al 60°C or 75°C for Line Terminals	Catalog Number	UPC Code
225	For use on 125, 150, 175, 200 and 225 Ampere BW and BWH Breakers	#2 – 300 kcmil	MCBK225	782114110591

BJ & BJH Main Breakers



BJ & BJH Main Breakers

Product Description

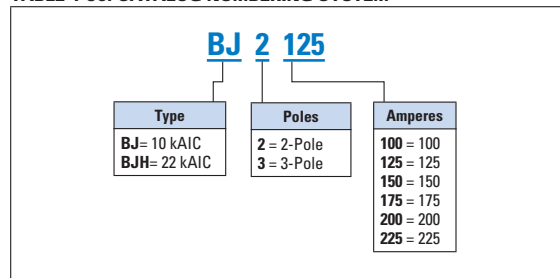
BJ breakers are replacement main circuit breakers in some older Westinghouse® and Bryant loadcenters. They are more commonly used as branch circuit breakers in current style Type BR loadcenters.

Features, Functions and Benefits

- ✓ Protects the entire main panel.
- ✓ Also can be used as a service disconnect.
- ✓ For use in single-phase and 3-phase loadcenters, 100 amperes and up.
- ✓ Full range from 100 to 225 amperes, 120/240 volts or 240 volts, 2- and 3-poles.
- ✓ 10 kAIC and 22 kAIC available.
- ✓ Five-year warranty.
- ✓ Meet UL 489, CSA, NEMA standards, Federal Spec Classification W-C 375 b/GEN.
- ✓ Plug-on circuit breaker.

Catalog Numbering System

TABLE 1-56. CATALOG NUMBERING SYSTEM



Data Tables

TABLE 1-57. TYPES BJ AND BJH BREAKERS, 1-INCH (25.4 MM) PER POLE, 120/240 OR 240 VAC, 10 AND 22 kAIC

Ampere Rating	2-Pole 120/240 Vac Common Trip Requires Four 1-Inch (25.4 mm) Spaces ①				Wire Size Range Cu/Al 60°C or 75°C	3-Pole 240 Vac Common Trip Requires Six 1-Inch (25.4 mm) Spaces ②			
	10 kAIC		22 kAIC			10 kAIC		22 kAIC	
	Catalog Number	UPC Code	Catalog Number	UPC Code		Catalog Number	UPC Code	Catalog Number	UPC Code
100	BJ2100	782116484294	—	—	#2 – 300 kcmil	—	—	—	—
125	BJ2125	786676367004	BJH2125	786676367028		BJ3125	786676368308	BJH3125	786676367455
150	BJ2150	786676367103	BJH2150	786676367127		BJ3150	786676368353	BJH3150	786676367509
175	BJ2175	786676367158	BJH2175	786676367172		BJ3175	786676368407	BJH3175	786676367554
200	BJ2200	786676367202	BJH2200	786676367226		BJ3200	786676368452	BJH3200	786676367608
225	BJ2225	786676367257	BJH2225	786676367271		BJ3225	786676368506	BJH3225	786676367653

① Breaker uses two 1-inch (25.4 mm) pole spaces on left side and two 1-inch (25.4 mm) pole spaces on right side of loadcenter.

② Breaker uses three 1-inch (25.4 mm) pole spaces on left side and three 1-inch (25.4 mm) pole spaces on right side of loadcenter.

Westinghouse is a registered trademark of Westinghouse Electric Company LLC. UL is a federally registered trademark of Underwriters Laboratories Inc. CSA is a registered trademark of the Canadian Standards Association. NEMA is the registered trademark and service mark of the National Electrical Manufacturers Association. National Electrical Code and NEC are registered trademarks of the National Fire Protection Association, Quincy, Mass. Square D is a federally registered trademark of Schneider Electric. Cutler-Hammer is a federally registered trademark of Eaton Corporation. Siemens is a federally registered trademark of Siemens AG. General Electric is a federally registered trademark of General Electric Company. Homeline is a registered trademark of Schneider Electric. Murray is a federally registered trademark of Siemens Energy & Automation, Inc. Thomas & Betts is a federally registered trademark of Thomas & Betts Corporation. Crouse-Hinds is a federally registered trademark of Cooper Industries.

Accessories

TABLE 1-4. FIELD INSTALLATION KITS AND PARTS

Description	Catalog Number	UPC Code	Minimum Order Quantity
Handle Ties ①			
Handle tie bar for physically joining the handles of two adjacent 1-pole Type CH Circuit Breakers. (Molded Plastic Handle Cover)	CHHT	782113099071	25
Handle tie bar for physically joining the handles of two adjacent 1-pole Type CH Circuit Breakers. (Clamshell)	CHHTCS	782114793220	1
Handle Lockoffs ②③			
Padlockable device for locking the handle of 1-, 2- or 3-pole Type CH Circuit Breakers. (Escutcheon Mounted) ④	CHPL	782113099118	1
Padlockable device for locking the handle of 1-, 2- or 3-pole Type CH Circuit Breakers. (Clamshell)	CHPLCS	782114793251	1
Padlockable device for locking the handle of a 1-, 2- or 3-pole Type CHGFI Circuit Breaker. (Escutcheon Mounted) ④	CHPLGF	782114213629	1
Padlockable device for locking the handle of main circuit breaker Types CC and CCH into the ON or OFF position. (Screw Mounted) ⑤	CCPL	782113099415	1
Padlockable device for locking the handle of main breaker Types BW and CSR into the ON or OFF position. (Escutcheon Mounted) ④	MCBPL	782113099309	1
Handle Lockdogs ③⑥			
Device used to secure handle in ON or OFF position for 1-pole Type CH Circuit Breakers. (Handle Mounted) ⑦	CHLO	782113099088	10
Device used to secure handle in ON or OFF position for 1-pole Type CH Circuit Breakers. (Clamshell)	CHLOCS	782114793237	1
Hold-Down Kits ⑧			
Hold-down retainer kit for 1-, 2-, 3-pole Type CH Circuit Breakers. For 6 – 24 circuit 125 ampere single- and 3-phase, 12 – 42 circuit 225 ampere single-phase and 24 – 42 circuit 3-phase 225 ampere MLO Type CH Loadcenters.	CH125RB	782113099125	1
Hold-down retainer kit for 1-, 2-, 3-pole Type CH Circuit Breakers. For 6 – 24 circuit 125 ampere single- and 3-phase, 12 – 42 circuit 225 ampere single-phase and 24 – 42 circuit 3-phase 225 ampere MLO Type CH Loadcenters. (Clamshell)	CH125RB24CS	782114793183	1
Hold-down retainer kit for 1-, 2-, 3-pole Type CH Circuit Breakers for 2 – 4 circuit MLO CH Loadcenters.	CH125RB24	782114344446	1
Hold-down retainer kit for 1-, 2-, 3-pole Type CH Circuit Breakers for 2 – 4 circuit MLO CH Loadcenters. (Clamshell)	CH125RB24CS	782114793190	1
Mounting Bases ⑧			
Mounting base for 2-pole Type CH Circuit Breaker — 70 ampere maximum.	CH9MB270	782113418926	1
Mechanical Interlock ⑧			
Type CH for 2-, 3- and 4-pole breakers	CHML	782114262849	10
Type CH for 2-, 3- and 4-pole breakers (Clamshell)	CHMLCS	782114793244	1
Type CH 2-pole plug-in surge arrester (Clamshell)	CHSACS	782114753408	1
Type CH sub-feed block 125 ampere, 2-pole (Clamshell)	CHSF2125CS	782114793268	1
Main Breaker Replacement Lug Kits			
CC/CCH Main Breaker Lug Kit 1 – 300 kcmil	CCL300	782113099354	1
Replacement Lug Kit for CSR/BW/BWH Main Breaker (CH Version)	MCBL300	782113099316	1

① Handle Ties: Typically used to join two similar independent single-pole breakers to form a 2-pole noncommon trip breaker.

② Handle Lockoffs: Devices that use a padlock to lock the circuit breaker's handle in the ON or OFF position.

③ Requires one additional pole space.

④ Escutcheon Mounted: Device mounted semipermanently to the face of the circuit breaker and secured by the loadcenter deadfront.

⑤ Screw Mounted: Device permanently mounted to the face of the circuit breaker by the use of a non-removable screw.

⑥ Handle Lockdogs: Devices that are used to secure a circuit breaker's handle in the ON or OFF position. Handle Lockdogs are not padlockable devices.

⑦ Handle Mounted: Device mounted above or below handle using spring pressure.

⑧ Hold-Down Kits: Devices used to secure the circuit breaker to the loadcenter for back-feed main application. See NEC® Article 384-16(g).

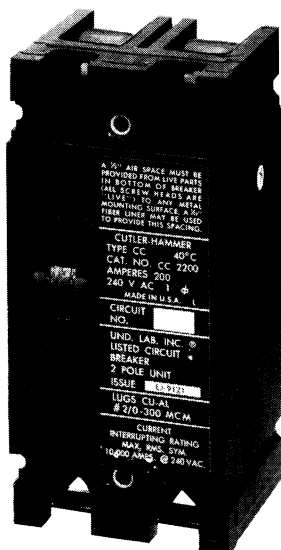


CUTLER-HAMMER CIRCUIT BREAKERS

T ECHNICAL
I NFORMATION
P UBLICATION
CC/CCH

9/87
New TIP

Type CC & CCH 240 Volt Molded Case Circuit Breakers, 100-225 Amperes



TYPE CC

Application — The breakers are designed for the protection of branch and feeder circuits and are used in panelboards, switchboards, busway plugs, apartment metering equipment and in individual enclosures.

Terminals — Box lug type of wire connectors are supplied with the circuit breakers. Line-side connectors may be removed for use in panelboards and metering equipment. These breakers, with the same ratings are also supplied with plug-on fittings for EE-Line panelboards.

Trip Amperes	Wire Size Range, AL/CU
100-150	(1) #4 — 4/0
175-225	(1) #2/0 — 300 MCM

DESIGN CHARACTERISTICS

- **Ratings** — 240 Vac, 2 or 3 Poles; through 225 continuous amperes, calibrated at 40°C. Any two poles of a three pole breaker may be used for two pole applications.
- **Tripping Characteristics** — Thermal-Magnetic trip, calibrated and sealed after assembly. Indirectly heated thermal tripping bimetal elements.
- **Interrupting Capacity** — At 240 Vac
Type CC — 10,000 Amperes RMS symmetrical
Type CCH — 25,000 Amperes RMS symmetrical
- **Handles** — Trip-free with “ON-TRIPPED-OFF” positions. Reset past “OFF” is required to latch breaker contacts after tripping.
- **Terminals** — Standard lugs (wire connectors) suitable for either CU or AL wire.
- **Standards** — Meets or exceeds Federal Specification W-C-375b. Complies with UL Standard 489 and NEMA Standard AB-1. Breakers are listed under UL File #E11713.

OPTIONAL FEATURES

- Handle Lock Attachment
- Shunt Trip
- Alarm Switch
- Auxiliary Switches

Options — Handle padlock attachment is a field installed kit, part number CC9PL. Shunt trips, alarm switch and auxiliary switches are all factory installed in right hand pole on two or three pole breakers. Auxiliary contacts may be mounted in left hand pole if other devices are installed in the right hand pole. Leads are 18” long and exit from the side of the breaker.

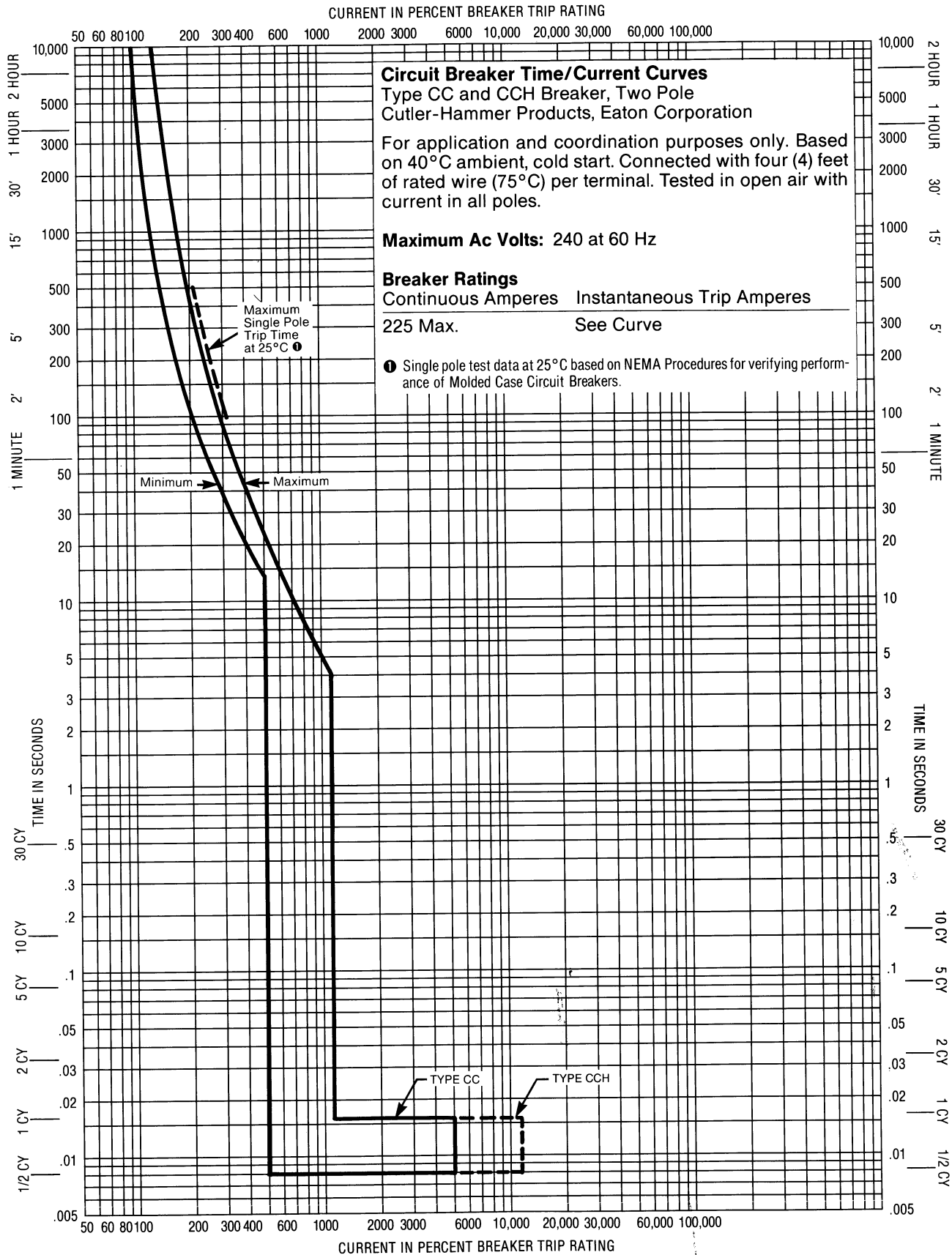
<p>Shunt Trip</p>	<p>Provides tripping from remote location. Solenoid coils available for 12, 24, 120, 208 and 240 Vac. Suitable for use with Class I ground fault sensors except 12 Vac.</p> <p>Coil clearing contact opens when breaker contacts are open.</p>
<p>Alarm Switch</p>	<p>Signals a tripped breaker condition. Rated 5 amp, 240 Vac maximum.</p> <p>Contact closes only when breaker is in tripped condition.</p>
<p>Auxiliary Switches</p>	<p>Indicates breaker contact position in remote control circuits. Available as single A-B or 2A-2B (2NO-2NC). 1A-1B contacts rated 11 amp continuous. 2A-2B contacts rated for 1/4 Hp.</p> <p>A closes, B opens when breaker is ON.</p>

The installation and use of Cutler-Hammer products should be in accordance with the provisions of the U.S. National Electrical Code and/or other local codes or industry standards that are pertinent to the particular end use. Installation or use not in accordance with these codes and standards could be hazardous to personnel and/or equipment.

CUTLER-HAMMER CIRCUIT BREAKERS

9/87
 New TIP

Type CC and CCH 240 Volt Molded Case 200 Ampere Breaker Curve



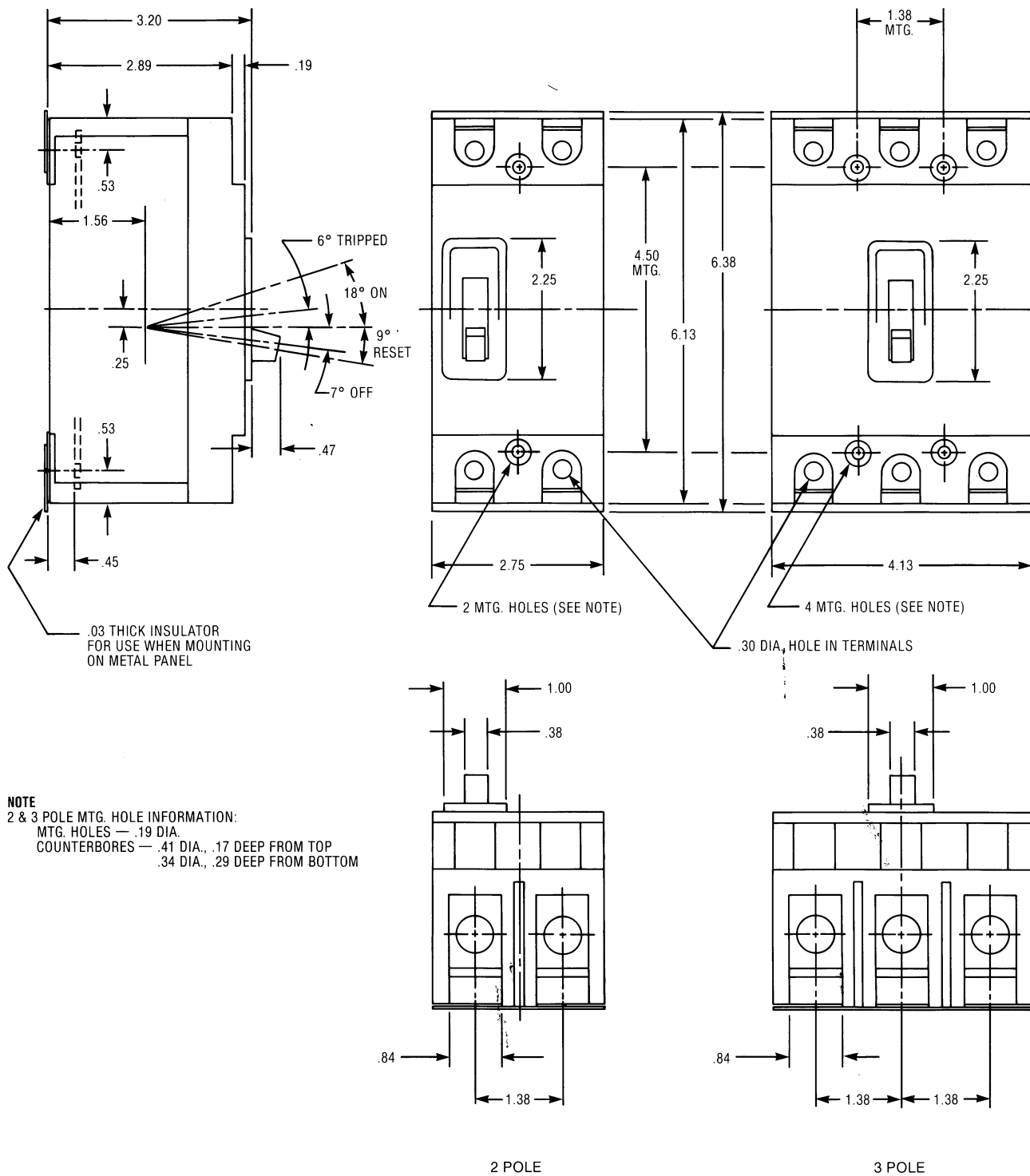
See note on installation and use of product at bottom of page 1.

CUTLER-HAMMER CIRCUIT BREAKERS

9/87
New TIP

Type CC & CCH Approximate Dimensions

TECHNICAL
INFORMATION
PUBLICATION
CC/CCH



See note on installation and use of product at bottom of page 1.