

Cable Managers

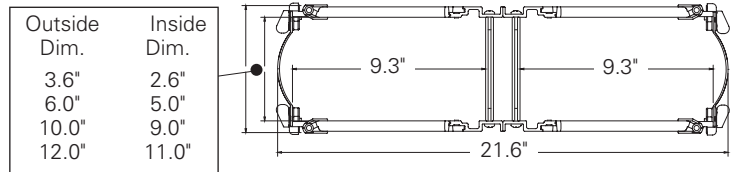
RCM+ System

RCM+ Rack Mounted Vertical Cable Manager With Cover Double Sided High Density Plastic Finger Style

- Single-sided SB860 Series RCM+ vertical cable managers with extended fingers are designed for routing high density cabling by providing maximum cable support for each rack mounting space. Provides greater cable capacity with access doors and gates on the front and rear
- Front and rear vertical sections can be spaced apart when mounting on racks deeper than 3" (76mm)
- Compatible with RCM+ extended horizontal cable managers
- Stylistic, full length doors, with quarter-turn locking hinges, allow for quick opening from either side or complete removal
- Six (6) snap-on gates retain cables when doors are opened or removed. Gates can be placed at any location
- Open back design allows unrestricted routing of cables between front and rear cables managers
- Installation is easy and can be done in minutes using standard hand tools
- Optional back removable covers are designed with pass through openings for cable routing, keyhole slots for cable spools, slots for cable straps, and keyhole slots for direct PDU mounting
- ¼" (6.3mm) accessory mounting holes run the full height on both sides of the cable manager to accommodate the attachment of cable management accessories
- UL Listed as a communication circuit accessory. File No. E171936
- Material: Aluminum with UL 94V-0 black plastic components
- Vertical cable manager includes:
 - (2) vertical cabling sections, (2) doors, (6) gates, (50) push-in fasteners, (12) cable strap mounts, (4) cable retainer bars and mounting hardware. On 10" and 12" wide cable managers only, and (2) spool kits are included
- Finish___: Flat black powder coat (FB)
Silver powder coat (SL)
Eaton white powder coat (EW)



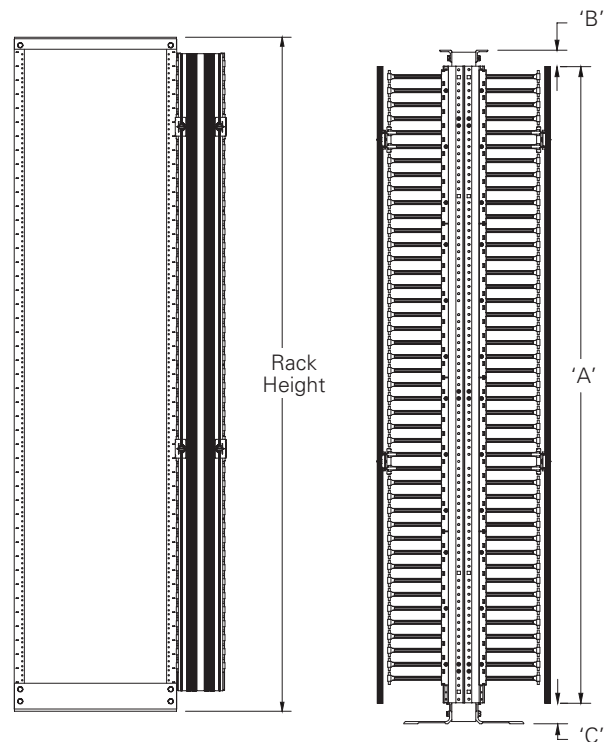
Top View



U.S. Patent 7,362,941
Other Patents Pending



Double sided,
84" high x 6" wide
SB86086D084FB



Cable managers

RCM+ Rack Mounted Vertical Cable Manager With Cover cont. Double Sided High Density Plastic Finger Style

Part Number	Fits Rack Height of In. (mm)	'A' In. (mm)	'B' In. (mm)	'C' In. (mm)	Weight Each Lbs. (kg)	Max CAT6A Cables (0.375" OD) (50% Fill)
3 ⁵ / ₈ " (92mm) Wide x 21 ⁵ / ₈ " (549mm) Deep						
SB86083D066__	66" (1676)	60 ³ / ₈ " (1533)	3" (76.2)	2 ⁵ / ₈ " (66.7)	23.7 (10.7)	218
SB86083D072__	72" (1829)	67 ³ / ₈ " (1711)	2" (50.8)	2 ⁵ / ₈ " (66.7)	26.5 (12.0)	218
SB86083D078__	78" (1981)	72 ⁵ / ₈ " (1845)	2 ³ / ₄ " (69.9)	2 ⁵ / ₈ " (66.7)	28.5 (12.9)	218
SB86083D084__	84" (2133)	79 ⁵ / ₈ " (2022)	1 ³ / ₄ " (44.4)	2 ⁵ / ₈ " (66.7)	30.9 (14.0)	218
SB86083D090__	90" (2286)	84 ⁷ / ₈ " (2156)	2 ¹ / ₂ " (63.5)	2 ⁵ / ₈ " (66.7)	33.1 (15.0)	218
SB86083D096__	96" (2438)	90 ¹ / ₈ " (2289)	3 ¹ / ₄ " (82.6)	2 ⁵ / ₈ " (66.7)	35.3 (16.0)	218
SB86083D108__	108" (2743)	102 ³ / ₈ " (2600)	3" (76.2)	2 ⁵ / ₈ " (66.7)	39.9 (18.1)	218
6" (152mm) Wide x 21 ⁵ / ₈ " (549mm) Deep						
SB86086D066__	66" (1676)	60 ³ / ₈ " (1533)	3" (76.2)	2 ⁵ / ₈ " (66.7)	26.7 (12.1)	421
SB86086D072__	72" (1829)	67 ³ / ₈ " (1711)	2" (50.8)	2 ⁵ / ₈ " (66.7)	29.9 (13.6)	421
SB86086D078__	78" (1981)	72 ⁵ / ₈ " (1845)	2 ³ / ₄ " (69.9)	2 ⁵ / ₈ " (66.7)	32.1 (14.6)	421
SB86086D084__	84" (2133)	79 ⁵ / ₈ " (2022)	1 ³ / ₄ " (44.4)	2 ⁵ / ₈ " (66.7)	34.9 (15.8)	421
SB86086D090__	90" (2286)	84 ⁷ / ₈ " (2156)	2 ¹ / ₂ " (63.5)	2 ⁵ / ₈ " (66.7)	37.2 (16.9)	421
SB86086D096__	96" (2438)	90 ¹ / ₈ " (2289)	3 ¹ / ₄ " (82.6)	2 ⁵ / ₈ " (66.7)	39.9 (18.1)	421
SB86086D108__	108" (2743)	102 ³ / ₈ " (2600)	3" (76.2)	2 ⁵ / ₈ " (66.7)	45.0 (20.4)	421
10" (254mm) Wide x 21 ⁵ / ₈ " (549mm) Deep						
SB860810D066__	66" (1676)	60 ³ / ₈ " (1533)	3" (76.2)	2 ⁵ / ₈ " (66.7)	38.4 (17.4)	757
SB860810D072__	72" (1829)	67 ³ / ₈ " (1711)	2" (50.8)	2 ⁵ / ₈ " (66.7)	42.8 (19.4)	757
SB860810D078__	78" (1981)	72 ⁵ / ₈ " (1845)	2 ³ / ₄ " (69.9)	2 ⁵ / ₈ " (66.7)	46.1 (20.9)	757
SB860810D084__	84" (2133)	79 ⁵ / ₈ " (2022)	1 ³ / ₄ " (44.4)	2 ⁵ / ₈ " (66.7)	49.9 (22.6)	757
SB860810D090__	90" (2286)	84 ⁷ / ₈ " (2156)	2 ¹ / ₂ " (63.5)	2 ⁵ / ₈ " (66.7)	52.6 (23.9)	757
SB860810D096__	96" (2438)	90 ¹ / ₈ " (2289)	3 ¹ / ₄ " (82.6)	2 ⁵ / ₈ " (66.7)	56.8 (25.8)	757
SB860810D108__	108" (2743)	102 ³ / ₈ " (2600)	3" (76.2)	2 ⁵ / ₈ " (66.7)	64.0 (29.1)	757
12" (305mm) Wide x 21 ⁵ / ₈ " (549mm) Deep						
SB860812D066__	66" (1676)	60 ³ / ₈ " (1533)	3" (76.2)	2 ⁵ / ₈ " (66.7)	46.3 (21.0)	926
SB860812D072__	72" (1829)	67 ³ / ₈ " (1711)	2" (50.8)	2 ⁵ / ₈ " (66.7)	51.4 (23.3)	926
SB860812D078__	78" (1981)	72 ⁵ / ₈ " (1845)	2 ³ / ₄ " (69.9)	2 ⁵ / ₈ " (66.7)	55.4 (25.1)	926
SB860812D084__	84" (2133)	79 ⁵ / ₈ " (2022)	1 ³ / ₄ " (44.4)	2 ⁵ / ₈ " (66.7)	60.0 (27.2)	926
SB860812D090__	90" (2286)	84 ⁷ / ₈ " (2156)	2 ¹ / ₂ " (63.5)	2 ⁵ / ₈ " (66.7)	63.6 (28.9)	926
SB860812D096__	96" (2438)	90 ¹ / ₈ " (2289)	3 ¹ / ₄ " (82.6)	2 ⁵ / ₈ " (66.7)	68.7 (31.2)	926
SB860812D108__	108" (2743)	102 ³ / ₈ " (2600)	3" (76.2)	2 ⁵ / ₈ " (66.7)	77.1 (35.0)	926

Specify part number and finish when ordering.

A = Height of RCM+ vertical section without doors

B = Distance between the top of the rack and the top of the RCM+ cable manager

C = Distance between the floor and the lowest part of the RCM+ cable manager