

**MODEL 68A11-1 1.3 MEGA PIXEL MINI DOME IP CAMERA
QUICK START GUIDE**



PK-93499-10-A0-5AAR2253
(68C11-1)

INSTALLATION

ENGLISH

WARNINGS AND CAUTIONS

- Read and understand all instructions. Follow all warnings and instructions marked on the product.
- Do not use this product near water - e.g., near a tub, wash basin, kitchen sink or laundry tub, in a wet basement, or near a swimming pool.
- Never push objects of any kind into this product through openings, as they may touch dangerous voltages.
- SAVE THESE INSTRUCTIONS.

WARNINGS AND CAUTIONS

- Never install communications wiring or components during a lightning storm.
- Never install communications components in wet locations unless the components are designed specifically for use in wet locations.
- Never touch uninsulated wires or terminals unless the wiring has been disconnected at the network interface.
- Use caution when installing or modifying communications wiring or components.

INSTALLATION

The quick start guide is for quickly installing and connecting the 1.3 Mega Pixel Mini Dome IP Camera. For complete details, please refer to the camera's user manual (Document Number: 68R11-1) which can be found on the supplied CD or at www.leviton.com.

Ethernet Connection

Please follow the instructions below to complete IP Dome Camera installation.

RJ-45 Dongle Cable Connection

Run an Ethernet cable through the Waterproof RJ45 Screw-On Plug. Then connect one end of the Ethernet cable to the RJ45 dongle, tightening the sealing nut of the Waterproof RJ45 Screw-On Plug completely.

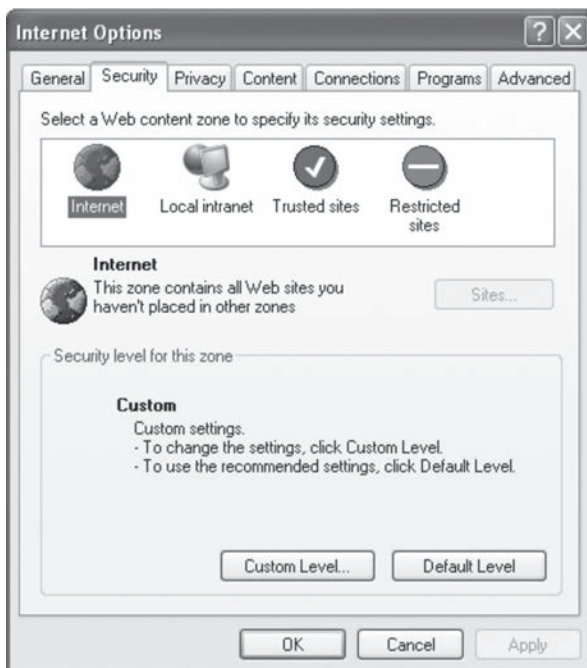
Connect the other end of the Ethernet cable to a Power Sourcing Equipment (PSE) device, such as a PoE network switch, hub, or power injector which provides the power.



Before Login to the IP Dome Camera

A client program will automatically be installed on your PC when connecting to the IP Dome Camera. Before accessing the IP Dome Camera, please ensure that the ActiveX control can be downloaded by changing the browser's security level to default. For further details, please refer to the IP Dome Camera's user manual.

ActiveX Controls and Plug-ins Settings	Internet Security Level
<p>Step 1: Start the Internet Explorer (IE).</p> <p>Step 2: Select <Tools> from the main menu of the browser. Then Click <Internet Options>.</p> <p>Step 3: Click the <Security> tab and select "Internet", and click <Custom level> to change ActiveX settings.</p> <p>Step 4: Set "ActiveX controls and plug-ins" items to <Prompt> or <Enable>.</p>	<p>Step 1: Start the IE.</p> <p>Step 2: Select <Tools> from the main menu of the browser. Then Click <Internet Options>.</p> <p>Step 3: Click the <Security> tab and select "Internet."</p> <p>Step 4: Down the page, press "Default Level" and click "OK" to confirm the setting. Close the browser window, and open a new one later for accessing the IP Dome Camera</p>



IP Dome Camera Login

For initial access to the IP Dome Camera, you can search for and configure the camera using the installer program: DeviceSearch.exe, which can be found in "DeviceSearch" folder on the supplied CD. For additional information about the DeviceSearch utility, refer to the camera's user manual (Document Number: 68R11-1) which can be found on the supplied CD or at www.leviton.com.

Otherwise you can connect to and configure the IP Dome Camera from a PC using its default IP address. The IP Dome Camera's default IP address is: **192.168.0.103**. Therefore, to access the IP Dome Camera for the first time, set the PC's IP address as: 192.168.0.XXX; for example:

IP Address: 192.168.0.100
Subnet Mask: 255.255.255.0

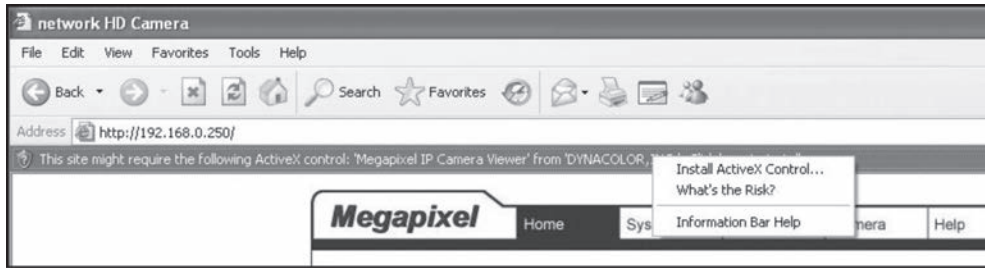
Login ID & Password

- Enter the IP address of the IP Dome Camera in the Address bar of the browser window and press "Enter".
- Enter the default user name (Admin) and password (1234) in the dialog. Note that user name is case sensitive.

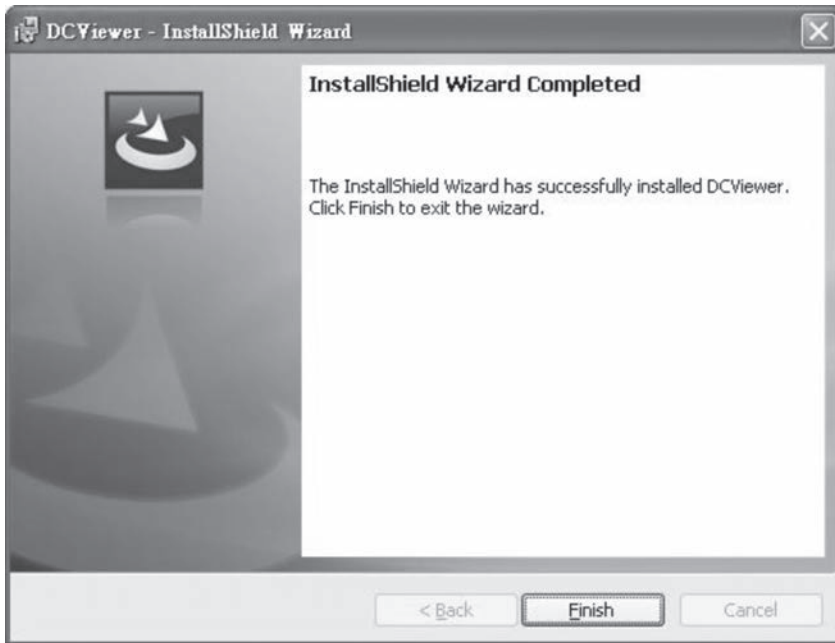
WEB VERSION

Install the ActiveX control

- After connecting to the IP Dome Camera, the request for installing the ActiveX control will appear just below the Address bar.
- Right Click on the Information bar, and press "Install ActiveX Control..." to permit the installation of the ActiveX control.

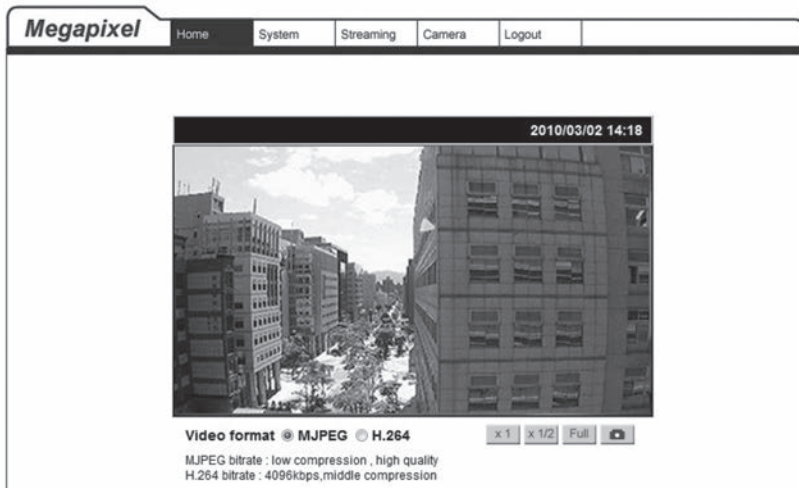


- In the pop-up security warning window, click "Install" to start downloading the DC Viewer software on the PC.
- Press "Finish" when DC Viewer installation is complete.



Browser-based Viewer

The main page of the IP Camera user interface is as shown below.



FOR CANADA ONLY

For warranty information and/or product returns, residents of Canada should contact Leviton in writing at **Leviton Manufacturing of Canada Ltd to the attention of the Quality Assurance Department, 165 Hymus Blvd, Pointe-Claire (Quebec), Canada H9R 1E9** or by telephone at **1 800 405-5320**.

COPYRIGHT AND TRADEMARK INFORMATION

This document and all its contents herein are subject to and protected by international copyright and other intellectual property rights and are the property of Leviton Manufacturing Co., Inc, its subsidiaries, affiliates and/or licensors. © 2013 Leviton Manufacturing Co., Inc. All rights reserved. Use herein of third party trademarks, service marks, trade names, brand names and/or product names are for informational purposes only, are/may be the trademarks of their respective owners; such use is not meant to imply affiliation, sponsorship, or endorsement. No part of this document may be reproduced, transmitted or transcribed without the express written permission of Leviton Manufacturing Co., Inc.

LEVITON LIMITED WARRANTY

Leviton warrants to the original consumer purchaser and not for the benefit of anyone else that products manufactured by Leviton under the Leviton brand name ("Product") will be free from defects in material and workmanship for the time periods indicated below, whichever is shorter: • **OmniPro II and Lumina Pro:** three (3) years from installation or 42 months from manufacture date. • **OmniLT, Omni Ite, and Lumina:** two (2) years from installation or 30 months from manufacture date. • **Thermostats, Accessories:** two (2) years from installation or 30 months from manufacture date. • **Batteries:** Rechargeable batteries in products are warranted for ninety (90) days from date of purchase. **Note:** Primary (non-rechargeable) batteries shipped in products are not warranted. **Products with Windows® Operating Systems:** During the warranty period, Leviton will restore corrupted operating systems to factory default at no charge, provided that the product has been used as originally intended. Installation of non-Leviton software or modification of the operating system voids this warranty. Leviton's obligation under this Limited Warranty is limited to the repair or replacement, at Leviton's option, of Product that fails due to defect in material or workmanship. Leviton reserves the right to replace product under this Limited Warranty with new or remanufactured product. **Leviton will not be responsible for labor costs of removal or reinstallation of Product.** The repaired or replaced product is then warranted under the terms of this Limited Warranty for the remainder of the Limited Warranty time period or ninety (90) days, whichever is longer. This Limited Warranty does not cover PC-based software products. **Leviton is not responsible for conditions or applications beyond Leviton's control. Leviton is not responsible for issues related to improper installation, including failure to follow written installation and operation instructions, normal wear and tear, catastrophe, fault or negligence of the user or other problems external to the Product.** To view complete warranty and instructions for returning product, please visit us at www.leviton.com.