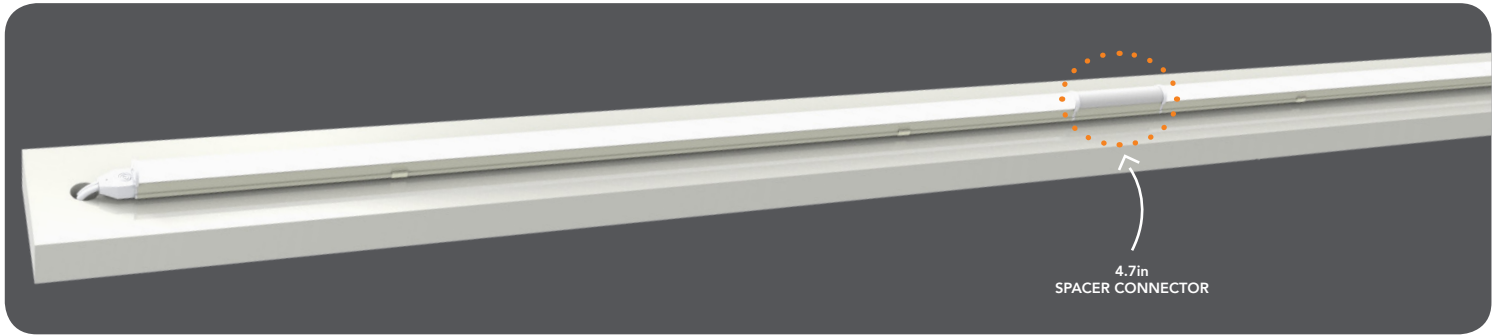
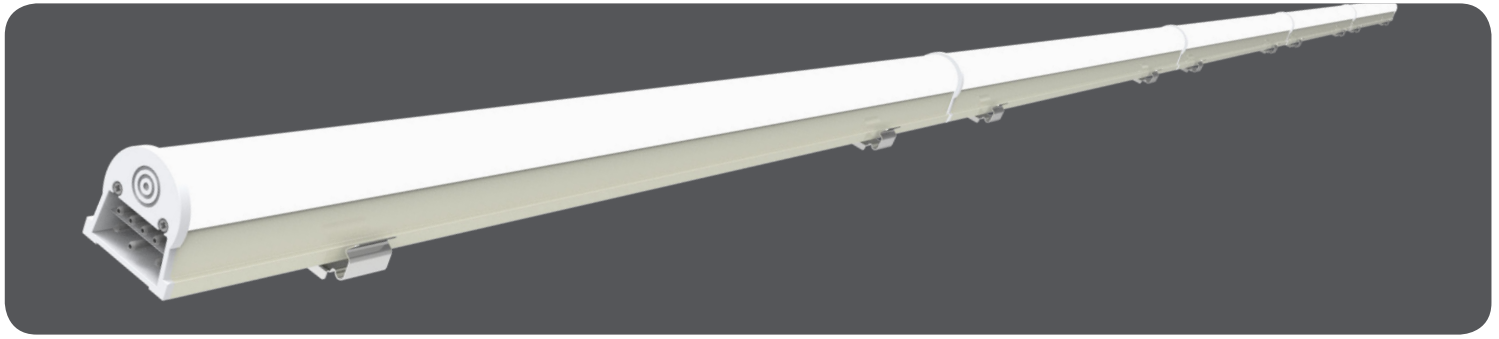


# LEDBarKit-Internal Driver (LBI)

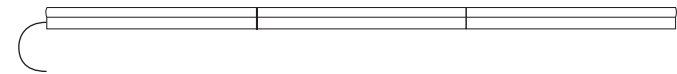
CONTINUOUS RUN FIXTURES / RETROFIT\*



\* Example Retrofit. Fixture not included.

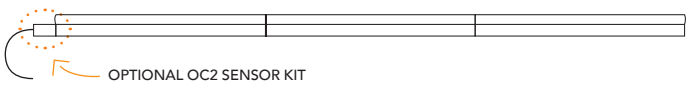
## RECOMMENDED INSTALLATION

### CONTINUOUS RUN



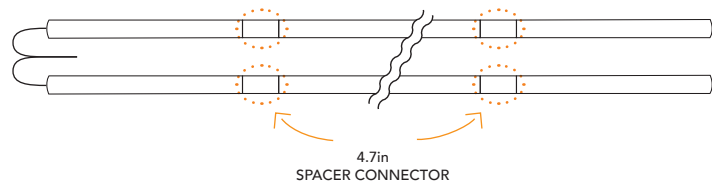
### CONTINUOUS RUN WITH OPTIONAL OC2 SENSOR KIT

OC2 Sensor can be installed on either end or in between any bars

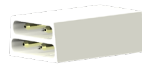


### CONTINUOUS RUN WITH SPACER CONNECT

Ideal for retrofitting fixtures of standard length



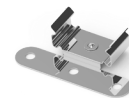
## ACCESSORIES



### SEAMLESS CONNECTOR\*

RP-LBI-SSC-DIM (sold separately)  
Links the OCC control signal to all bars.  
RP-LBI-SSC-NODIM (sold separately)  
Isolates each OCC control group within the continuous run.

\*All continuous run installations require seamless connectors.



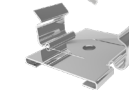
### SURFACE MOUNT MAGNETIC CLIP

RP-LBI-SMM (2x included with bar)



### SUSPENDED IN-LINE BRACKET

RP-LBI-SIL (sold separately)  
Recommended qty = number of bars + 1



### T-BAR CLIP

RP-LBI-T1516 (sold separately)  
Recommended qty = 2x per bar



### 4.7in SPACER CONNECTOR

RP-LBI-SRC-4.7IN (sold separately)

**RemPhos** by **Light Efficient Design**  
lighting on target

FOR PRODUCT INFO ("LED" MODEL #) CONTACT.....Light Efficient Design • 188 S. Northwest Highway • Cary, IL 60013 • 847.380.3540 • led-llc.com  
FOR PRODUCT INFO ("RP" MODEL #) CONTACT.....RemPhos by Light Efficient Design • 30 Log Bridge Road, Building 200 • Middleton, MA 01949 • 877.997.3674 • remphos.com