



# SmartBox

Think Inside the Box

The 1-4 gang Smart Boxes are unmatched in versatility in new work locations where you can not swing a hammer and where final wall surfaces are uncertain example; kitchens and baths. They are unmatched in old or retro fit work applications because they are always mounted to a stud. Before the introduction of Smart Box all other manufacturers hung their cut boxes on flimsy 3/8 or 1/2 sheet rock, even worse lathe and plaster. Finally these 4 Smart Boxes are unmatched in adjustability as they are molded entirely of 1 piece with no moving parts to break or lose. The mounting screws in these boxes have a 42 lb. torque rating, a necessity for the function of these products.

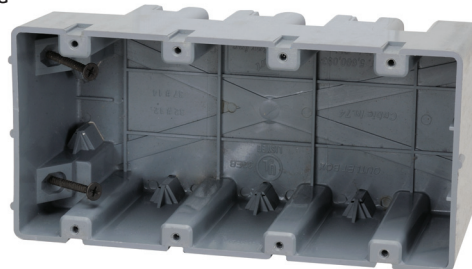
## FEATURES & BENEFITS

- Available in 1, 2, 3, 4 gang and horizontal.
- Designed 100% with the electrician in mind.
- Step down feature allows for wire entrance in both top and bottom of box.
- Heavy duty 42 lbs mounting screws supplied.
- Mounts to wood or metal stud 25g.
- Extra thick PVC wall material creates stability and rigidity in product.
- Built in wire clamps.
- All 6/32 device holes are threaded.
- Use where final wall surface is uncertain; kitchens and baths.

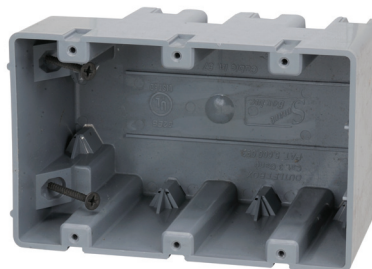
## SPECIFICATIONS

Item#	Description	Inner Carton	Master Carton	Trade Size	Cubic Inches	Weight	UPC
MSB1G	1 Gang Device Box		100	1 Gang	18.5	27 lbs.	50784297017624
MSB2G	2 Gang Device Box		60	2 Gang	38	23 lbs.	50784297017648
MSB3G	3 Gang Device Box	20	40	3 Gang	57	2.5 lbs. - 20 lbs.	30784297017651
MSB4G	4 Gang Device Box	20	40	4 Gang	74	13 lbs. - 26 lbs.	30784297017668
MSBHZ	1 Gang Horizontal Device Box		50	1 Gang	22.5	15 lbs.	50784297017679
MSB22+	1 Gang Device Box {22.5/c}		50	1 Gang	22.5	15 lb	50784297017631

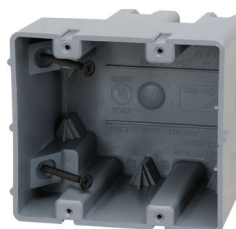
MSB4G



MSB3G



MSB2G



MSB1G





# SmartBox

Think Inside the Box

## Original 3 in 1 Boxes

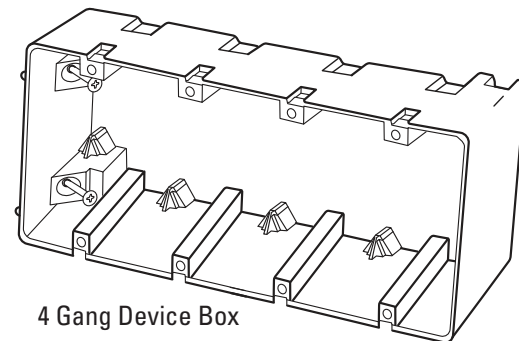
- SB 1G – Volume 18.5 cu in.- wire capacity (9) #14 gauge wires, (8) #12 gauge wires – Standard dimensions, with a depth of 3 1/2 inches.
- SB 22+ - Volume 22.5 cu. in.- wire capacity (11) #14 gauge wires, (10) #12 gauge wires – Standard dimensions, with a depth of 3 1/2 inches.
- SB 2G - Volume 38 cu. in.- wire capacity (19) #14 gauge wires, (16) #12 gauge wires – Standard dimensions, with a depth of 3 1/2 inches.
- SB 3G - Volume 57 cu. in.- wire capacity (28) #14 gauge wires, (25) #12 gauge wires – This 3 gang box has standard dimensions, with a depth of 3 1/2 inches.
- SB 4G - Volume 74 cu. in.- wire capacity (37) #14 gauge wires, (32) #12 gauge wires – Standard dimensions, with a depth of 3 1/2 inches.
- SB HZ - Volume 22.5 cu. in.- wire capacity (11) #14 gauge wires, (10) #12 gauge wires – Standard dimensions, with a depth of 3 1/2 inches.
- Manufactured from high quality Poly Vinyl Carbonate material.
- Testing on these products was conducted and found in accordance with the Standard for Nonmetallic Outlet boxes, Flush-device boxes, and Covers, UL514C, third edition.
- Classification 32EB.
- Products protected in US Patent # 5,600,093

## FEATURES & BENEFITS

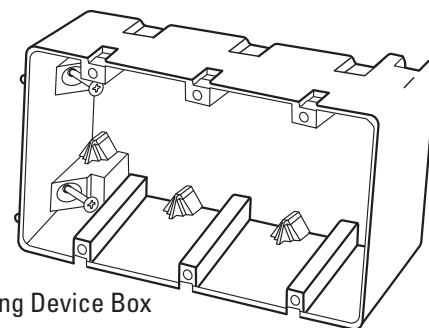
- Available in 1, 2, 3, 4 gang and horizontal.
- Designed 100% with the electrician in mind.
- Step down feature allows for wire entrance in both top and bottom of box.
- Heavy duty 42 lbs mounting screws supplied.
- Mounts to wood or metal stud 25g.
- Extra thick PVC wall material creates stability and rigidity in product.
- Built in wire clamps.
- All 6/32 device holes are threaded.
- Use where final wall surface is uncertain; kitchens and baths.

## SPECIFICATIONS

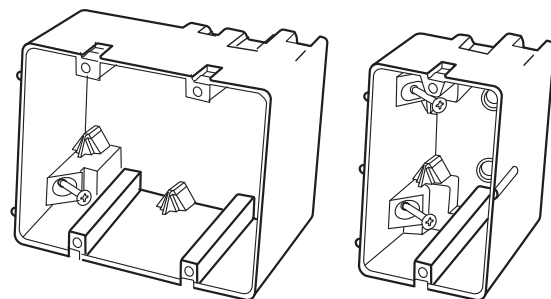
Item#	Description	Width/ No Tabs	Height/ No Tabs	Depth	Weight (oz.)	Cubic Inch	Wire Fill (#14g)	Wire Fill (#12g)	Wire Fill (#10g)
MSB1G	1 Gang Device Box 18.5c	2.25	3.75	3.50	3.5	18.50	9	8	
MSB2G	2 Gang Device Box 38c	4.25	3.75	5.50	5.5	38	19	16	10
MSB3G	3 Gang Device Box 57c	6	3.75	7	7	57	28	25	
MSB4G	4 Gang Device Box 74c	7.75	3.75	9	9	74	37	32	
MSBHZ	1 Gang Horizontal Device Box 22.5c	3.75	2.25	4	4	22.50	11	10	
MSB22+	1 Gang Device Box 22.5c	2.25	3.75	4	4	22.50	11	10	



4 Gang Device Box



3 Gang Device Box



2 Gang Device Box

1 Gang Device Box