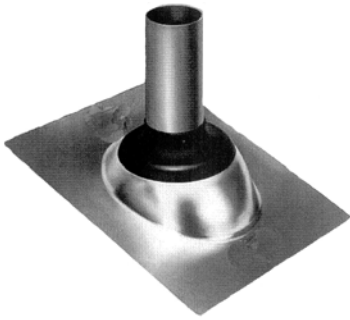


Galvanized Self-Seal Roof Flashings



- Slips easily over vent pipe - self-sealing to vent pipe surface
- Self-sealing elastomeric collar attached to a base of heavy gage aluminum
- Collar will not crack, chip, peel or separate from aluminum
- Eliminates caulking - no sealing compound required
- Absolutely leak-proof & fits most roof sizes
- Accommodates all vent types - ie: plastic, copper, steel or cast iron

Cat No.	Size	Case Qty	Wt/Case	Each	1-17 Cases	18 Cases
G11830	1/2" - 1"	12	11			
G12201	1-1/4" - 1-1/2"	12	12			
G12202	2"	12	12			
G12203	3"	12	17			
G12204	4"	12	23			

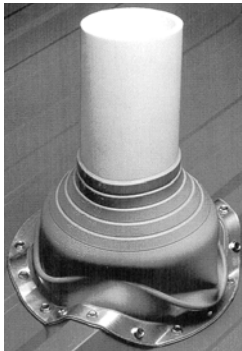
Rubber Flexible Flashings



- Rubber seizes the vent pipe with a locking grip preventing leakage entirely
- One piece construction molded from military grade elastomer assures long life & all weather protection - will not crack, chip or peel; oil, ozone & sunlight (UV) resistant
- Highly adaptable product installs quickly & easily & adjusts to wide range of roof pitches, contours & surfaces
- Accommodates all vent types - ie: plastic, copper, steel or cast iron

Cat No.	Size	Case Qty	Wt/Case	Each	1-17 Cases	18 Cases
G30101	1-1/4" - 1-1/2"	12	6			
G30102	2"	12	7			
G14025	2-1/2"	12	8			
G30103	3"	12	9			
G30104	4"	12	13			

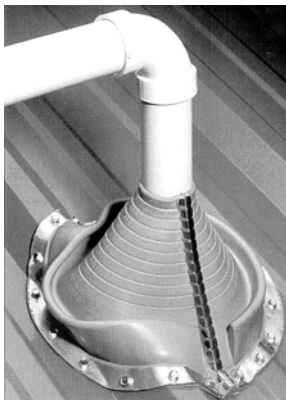
Metal Roof Flashings



- Attaches to most decks, aluminum, copper, lead, plastic, fiberglass, etc.
- Applications include plumbing, heating & air conditioning pipes & vents, electrical service entrances, etc.
- Flexible, weather resistant E.P.D.M. resists ozone & UV light
- Pleated cone adjusts to any roof pitch & allows for complete flexibility
- Effectively isolates the pipe from the building movement created by expansion, contraction & vibration
- -30°F - 250°F continuous service temperature range
- Compatible with pipes of steel, PVC, copper & sheet metal

Cat No.	Outside Diameter of Pipe to be Flashing	Base Diameter	Height	Case Qty	Wt/Case	Each	1-17 Cases	18 Cases
G14741	1/4" - 2"	4-3/4"	3"	10	2			
G14743	1/4" - 4"	7-3/4"	4"	5	4			

Retrofit Roof Flashings



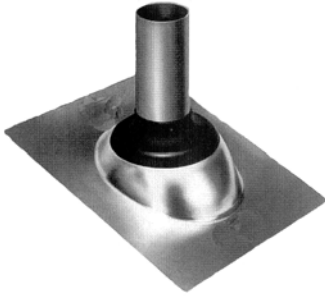
- Designed for applications where continuous pipes or obstructions prevent the use of standard flashings
- Easily installed by wrapping around existing pipe & fastening down onto roof deck
- The pliable cone & stainless steel closure can easily be trimmed to the exact diameter of pipe to be flashed
- Unique stainless steel closure effectively resists corrosion & provides a positive weatherproof seal
- Corrosion-resistant aluminum base can be easily shaped to conform to most roof profiles
- Made of flexible, weatherproof E.P.D.M. rubber
- Insulates the pipe from building movement caused by expansion, contraction, & vibration
- -30°F - 250°F continuous service temperature range
- Pipe diameter markings on the flexible cone in inches & millimeters

Cat No.	Outside Diameter of Pipe to be Flashing	Base Diameter	Height	Case Qty	Wt/Case	Each	1-17 Cases	18 Cases
G14751	1/4" - 2"	4-3/4"	3"	10	3			
G14752	1/4" - 4"	7-3/4"	4"	5	6			



GWG CEMENTS & ROOF FLASHINGS

2 Piece Electrical Service Mast Flashing



- Self-sealing collar slides over pipe and requires no caulking for up to 40° pitch
- Collar unattaches from flashing base for Electrical Service Mast applications
- Rated 180°F continuous heat
- Collar and base are separate to allow for easier installation
- 18"x18" Rustproof Galvanized Base

Cat. No.	Size	Ctn. Qty.	Wt/Ctn	Each	1-17 Cases	18 Cases
G11536	1-1/4"	25	27			
G11549	1-1/2"	25	32			
G11552	2"	25	28			
G11565	2-1/2"	25	30			

Thermoplastic Base Self Seal Roof Flashing



- Self-sealing elastomeric collar attached to a sturdy thermoplastic base
- No caulking needed
- Absolutely leak proof
- Slips easily over pipe vent
- Self-sealing to vent pipe surface
- Self-adjusting to all roof pitches
- Base will not crack or warp
- Accommodates all vent pipe types - ie: plastic, copper, steel, cast iron, etc.

Cat. No.	Size	Case Qty	Wt/Case	Each	1-17 Cases	18 Cases
G14101	1-1/4" - 1-1/2"	12	6			
G14102	2" - 2-1/2"	12	6			
G14103	3"	12	6			
G14104	4"	12	9			

Master Boot Universal



- Can be used with any type of roofing material, ie: asphalt, plastic, tile, rubber, metal, etc.
- Self-sealing stepcone boot made of premium grade E.P.D.M., which gives it maximum resistance to weathering due to ozone & UV light
- Flexible aluminum alloy rim assures a formed fit and corrosion resistance - excellent for ribbed metal roofs
- Provides a permanent seal that is unaffected by expansion/contraction, vibration, ice, snow, hailstones, etc.
- Installs in about 10 minutes
- Excellent for wall penetrations - weathertight and airtight, inside or outside

Cat. No.	Size	Case Qty	Wt/Case	Each	1-17 Cases	18 Cases
G16250	1/8" - 3/4"	12	3			
G16251	1/4" - 2"	6	2			
G16252	1-1/4" - 3"	6	3			
G16253	1/4" - 4"	6	4			

Light Cutting Oil



- Formulated for hand thread cutting machines
- Protection helps make sharp clean threads while extending the life of your dies
- Anti-mist and non-staining formula is not affected by weather

Cat. No.	Size	Case Qty	Wt/Case	Each	1-17 Cases	18 Cases
G30201	1 Qt.	12	26			
G30202	1 Gal.	6	50			

Dark Cutting Oil



- Formulated for high-speed cutting machines
- A special mixture of sulphonated and chlorinated oils provides high film strength
- Keeps machines running cooler and extends the life of your dies
- Anti-mist and non-staining formula is not affected by weather

Cat. No.	Size	Case Qty	Wt/Case	Each	1-17 Cases	18 Cases
G30204	1 Qt.	12	26			
G30205	1 Gal.	6	50			