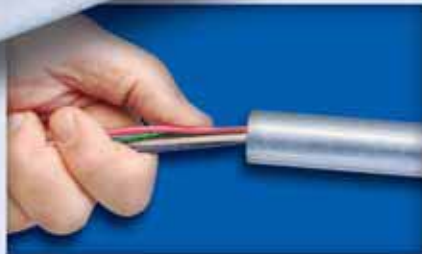


# Allied E-Z PULL<sup>®</sup> EMT

## Quality Electrical Metallic Tubing

### E-Z to Install



*E-Z Wire Pulling*

Allied EMT combines strength with ductility, resulting in faster and easier installations. EMT provides easy bending, cutting and joining while resisting flattening, kinking and splitting, creating smooth, continuous raceways for fast wire pulling.

Allied E-Z Pull<sup>®</sup> EMT has a special low friction ID coating that greatly improves the slip properties between conduit and wire. With E-Z Pull, wire pulls through the conduit smoothly and easily.

### KWIK-FIT<sup>®</sup> EMT



*An innovation from the conduit leader*

Allied's Kwik-Fit EMT has an integral steel set-screw coupling formed on one end of each length of EMT. Specifying U.L. listed Kwik-Fit EMT ensures an all steel system — both conduit and coupling for excellent strength and ground return, as well as economy. Contact Allied for detailed specifications on Kwik-Fit EMT. Available in trade sizes 2-4.

 **allied**  
TUBE & CONDUIT

# Allied E-Z PULL<sup>®</sup> EMT Specifications

## MANUFACTURED FOR LONG LIFE

Allied EMT is precision manufactured from high grade mild strip steel for exceptional durability and long-lasting life.

Allied EMT is hot galvanized using Allied's patented in-line Flo-Coat<sup>®</sup> process. This process combines zinc, a conversion coating, and a clear organic polymer top-coat to form a triple layer of protection against corrosion and abrasion.

## EMI SHIELDING

Allied EMT greatly reduces electromagnetic fields, effectively shielding computers and sensitive electronic equipment from the electromagnetic interference caused by power distribution systems. For further information, visit our website for a free download of the **GEMI (Grounding and ElectroMagnetic Interference)** analysis software and related research papers.

## FULL CODES AND STANDARDS COMPLIANCE

Allied EMT is listed to Underwriters Laboratories Safety Standard UL 797 and meets ANSI C80.3, which have been adopted as federal specifications in lieu of WWC 563. EMT is recognized as an equipment grounding conductor by NEC Section 250-118. Documentation for compliance with NEC Article 250 is also available in the **GEMI (Grounding and ElectroMagnetic Interference)** analysis software and related research studies found at the [www.allieded.com](http://www.allieded.com) website.

Installation of EMT shall be in accordance with the National Electrical Code and the UL listing information. Allied EMT is listed in category FJMX.

Master bundles conform to NEMA Standard RN2.

## SPECIFICATION DATA

To specify Allied EMT, include the following: Electrical Metallic Tubing shall be equal to that manufactured by Allied Tube & Conduit Corporation. EMT shall be hot galvanized steel O.D. with an organic corrosion resistant I.D. coating and shall be produced in accordance with U.L. Safety Standard #797 and ANSI C80.3 and shall be listed by a nationally recognized testing laboratory with follow-up service. Where **Kwik-Fit EMT** is used it shall also meet U.L. Safety Standard #514-B. It is noted that these U.L. and ANSI standards have been adopted by the federal government and separate military specifications no longer exist.

## Weights and Dimensions for Electrical Metallic Tubing

Trade Size Designator		Approx. Wt. Per 100 Ft. (30.5M)		Nominal Outside Diameter <sup>1</sup>		Nominal Wall Thickness		Quantity In Master Bundle	
U.S.	Metric	lb.	kg.	in.	mm	in.	mm	ft.	m
1/2	16	30	13.6	0.706	17.9	0.042	1.07	7000	2135.0
3/4	21	46	20.9	0.922	23.4	0.049	1.25	5000	1525.0
1	27	67	30.4	1.163	29.5	0.057	1.45	3000	915.0
1-1/4	35	101	45.8	1.510	38.4	0.065	1.65	2000	610.0
1-1/2	41	116	52.6	1.740	44.2	0.065	1.65	1500	457.5
2	53	148	67.1	2.197	55.8	0.065	1.65	1200	366.0
2-1/2	63	216	98.0	2.875	73.0	0.072	1.83	610	186.1
3	78	263	119.3	3.500	88.9	0.072	1.83	510	155.6
3-1/2	91	249	158.3	4.000	101.6	0.083	2.11	370	112.9
4	103	393	178.2	4.500	114.3	0.083	2.11	300	91.5

<sup>1</sup>Outside diameter tolerances:

+/- .005 in. (.13mm) for trade sizes 1/2 (16mm) through 2 (53mm);  
 +/- .010 in. (.25mm) for trade sizes 2-1/2 (63mm);  
 +/- .015 in. (.38mm) for trade size 3 (78mm);  
 +/- .020 in. (.51mm) for trade sizes 3-1/2 (91mm) and 4 (103mm).

NOTE: Length = 10 ft. (3.05m) with a tolerance of ± .25 in. (6.35 mm)

## Weights and Dimensions for Kwik-Fit EMT

Trade Size Designator		Approx. Wt. Per 100 Ft. (30.5M)		Nominal Outside Diameter <sup>1</sup>		Nominal Wall Thickness		Quantity In Master Bundle	
U.S.	Metric	lb.	kg.	in.	mm	in.	mm	ft.	m
2	53	148	67.1	2.197	55.8	0.065	1.65	500	152.4
2-1/2	63	216	98.0	2.875	73.0	0.072	1.83	350	106.8
3	78	263	119.3	3.500	88.9	0.072	1.83	300	91.5
3-1/2	91	349	158.3	4.000	101.6	0.083	2.11	250	76.3
4	103	393	178.2	4.500	114.3	0.083	2.11	250	76.3

<sup>1</sup>Outside diameter tolerances:

+/- .005 in. (.13mm) for trade size 2 (53mm);  
 +/- .010 in. (.25mm) for trade size 2-1/2 (63mm);  
 +/- .015 in. (.38mm) for trade size 3 (78mm);  
 +/- .020 in. (.51mm) for trade sizes 3-1/2 (91mm) and 4 (103mm).

NOTE: Length = 10 ft. (3.05m) with a tolerance of ± .25 in. (6.35 mm)

For more information, contact Allied at (800) 882-5543, or visit our website at [www.allieded.com](http://www.allieded.com)



Allied Tube & Conduit  
 Registered to ISO 9001:2000  
 File Numbers A2106, A1654, A12768

## ALLIED ELECTRICAL GROUP

• Allied Tube & Conduit • AFC Cable Systems<sup>®</sup> • Cope<sup>®</sup> Cable Tray • Power-Strut<sup>®</sup> Metal & Fiberglass Framing

[www.allieded.com](http://www.allieded.com)

E-Z Pull, Allied Tube & Conduit, AFC Cable Systems, Cope, Power-Strut, and Tyco are trademarks or registered trademarks of Tyco and/or its affiliates in the United States and in other countries. All other brand names, product names, or trademarks belong to their respective owners.

© Allied Tube & Conduit Printed in U.S.A. ATC-L-1748-0608