

# Electrical Construction Supplies

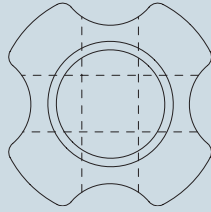
## Porcelain Insulators

### Strain Insulators

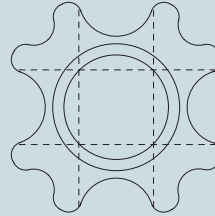
High quality insulators. Porcelain in compression for maximum strength. Catalog item #500-D made of economical dry process porcelain. Others made of wet process porcelain. Catalog item #708 is a multi-fin type.

Standard insulator glaze "Skyline" ANSI-70, Munsell 5 BG

502



708

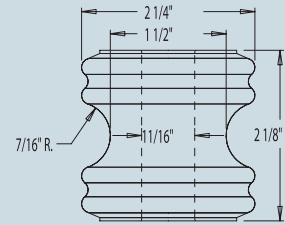


| Catalog No. | ANSI class | Tensile Strength Pounds | Length (inches) | Diameter (inches) | Hole (inches) | Std. Pkg. | Wt. per 100 |
|-------------|------------|-------------------------|-----------------|-------------------|---------------|-----------|-------------|
| 500-D       |            |                         | 2 1/4           | 1 11/16           | 3/8           | 100       | 23          |
| 502         | 54-1       | 10.000                  | 3 1/2           | 2 1/2             | 5/8           | 50        | 128         |
| 504         | 54-2       | 12.000                  | 4 1/4           | 2 7/8             | 7/8           | 25        | 178         |
| 506         | 54-3       | 20.000                  | 5 1/2           | 3 3/8             | 1             | 25        | 368         |
| 708         | 54-4       | 20.000                  | 6 3/4           | 3 1/2             | 1             | 20        | 380         |

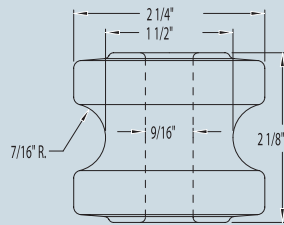
Suffix D - Dry Process Porcelain

### Spool Insulators - Wet Process Porcelain

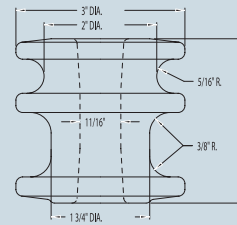
5112



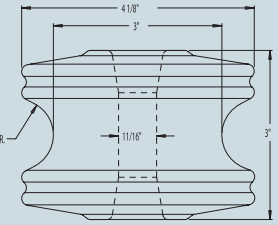
5107



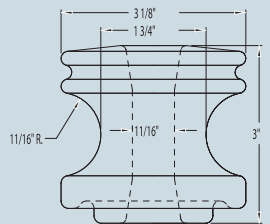
5102



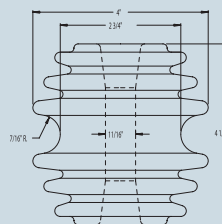
5119



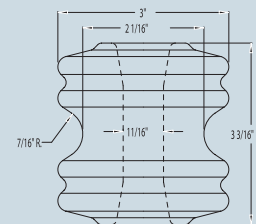
5101



5116



5104



### Mechanical and Electrical Characteristics

| Catalog No. | ANSI Class | Ultimate Strength (lbs.) | LOW-FREQUENCY FLASHOVER-KV |           |            | Std. Pkg. | Wt. per 100 |
|-------------|------------|--------------------------|----------------------------|-----------|------------|-----------|-------------|
|             |            |                          | Dry                        | Vert. Wet | Horiz. Wet |           |             |
| 5101        | 53-2       | 3.000                    | 25                         | 12        | 15         | 50        | 120         |
| 5102        | 53-2       | 3.000                    | 20                         | 10        | 12         | 50        | 110         |
| 5104        | 53-3       | 4.000                    | 25                         | 12        | 15         | 50        | 135         |
| 5107        | 53-3       | 1.750                    | 18                         | 7         | 9          | 100       | 45          |
| 5112        | 53-1       | 2.000                    | 20                         | 8         | 10         | 100       | 50          |
| 5116        | 53-5       | 6.000                    | 35                         | 18        | 25         | 25        | 250         |
| 5119        | 53-4       | 4.500                    | 25                         | 12        | 15         | 25        | 252         |

Standard insulator glaze "Skyline" ANSI-70, Munsell 5 BG 7.0/0.4. Brown or white glaze available on special order, add suffix "B" to catalog number for brown glaze or "W" for white glaze