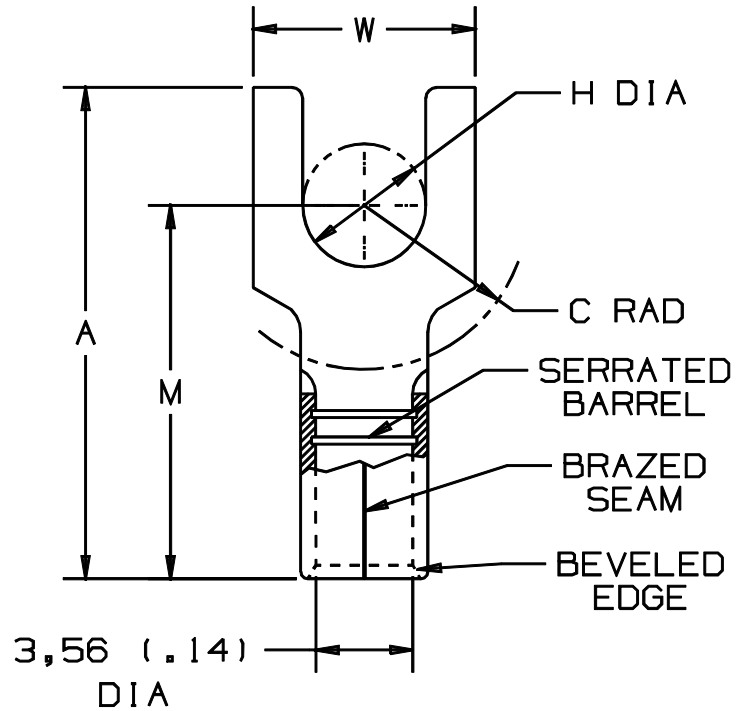


THIS COPY IS PROVIDED ON A RESTRICTED BASIS AND IS NOT TO BE USED IN ANY WAY DETRIMENTAL TO THE INTERESTS OF PANDUIT CORP.

PANDUIT PART #		STUD SIZE	DIMENSIONS mm				
PREFIX	PK		A $\pm 0,51$	W $\pm 0,25$	C $\pm 0,38$	M $\pm 0,51$	H $\pm 0,25$
PM6-4F	-L -D	M4	19,36 (.76)	7,95 (.31)	7,11 (.28)	13,97 (.55)	4,32 (.17)
PM6-5F	-L -D	M5	19,36 (.76)	9,52 (.37)	7,11 (.28)	13,97 (.55)	5,33 (.21)
PM6-6F	-L -D	M6	22,61 (.89)	10,92 (.43)	8,64 (.34)	16,26 (.64)	6,60 (.26)



NOTES:

- USED FOR:
A. 2,5-6,0mm² (#12-10 AWG), SOLID OR STRANDED, COPPER WIRE
- MATERIAL:
A. STAMPING - 1,02mm (.04) THK COPPER, TIN PLATED
- DIMENSIONS IN BRACKETS ARE IN INCHES
- PACKAGE QTY:
A. STD: L=50
B. BULK: D=500
- WIRE STRIP LENGTH: $7,1 \begin{matrix} +,8 \\ -0 \end{matrix}$ ($9/32 \begin{matrix} +1/32 \\ -0 \end{matrix}$)
- INSTALLATION TOOLS: REF. DWGS. A41522, A41523, A41524, A41525

A41429_02

02	10/97	TM		CHANGED DECIMAL POINTS TO COMMAS				 TINLEY PARK, ILLINOIS NON-INSULATED METRIC FORKS 2,5-6,0mm ² BARREL
01	1/97	TM	RLS	UPDATED DIMENSIONS FILESPEC WAS NPC_A41429_00	05478	LA	DH	
00	7-90	BK	RLS	RELEASED	00687	LA	KRS	
REV	DATE	BY	CHK	DESCRIPTION	ECN #	CUST	PM	DRAWN BY BDK Ck'D SCALE NONE DRAWING NO. A41429