



# U.S.A – Installation & Specification Guide

## Philips LED T8 InstantFit Lamp

Please take the time to read this quick installation guide. The guide contains important information and notes regarding the installation and operation.

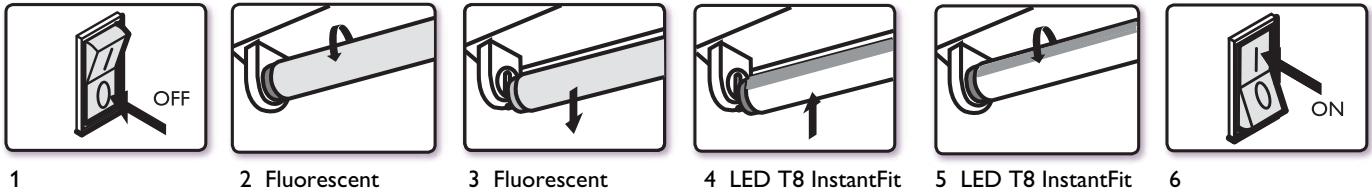
- Please keep this Quick Installation Guide for future reference.
- Product is not dimmable
- Modifications to the product void the warranty.
- Suitable to replace fluorescent lamps as specified on the product label.

**PHILIPS**

## Product Specifications

Product No.	Order Code	Bare Lamp Power (W)			Average System Power (W)			Initial Lumens			Rated Avg. Life (hrs)	Base	Length (In.)	Bulb Type
		Low Ballast Factor (0.78)	Normal Ballast Factor (0.88)	High Ballast Factor (1.18)	Low Ballast Factor (0.78)	Normal Ballast Factor (0.88)	High Ballast Factor (1.18)	Low Ballast Factor (0.78)	Normal Ballast Factor (0.88)	High Ballast Factor (1.18)				
433060	14.5T8/48-3000 IF 10/1	12.5	14.5	20	14.5	16.5	22	1300	1500	1900	40,000	G13	48	T8
433268	14.5T8/48-3500 IF 10/1	12.5	14.5	20	14.5	16.5	22	1300	1500	1900	40,000	G13	48	T8
433078	14.5T8/48-4000 IF 10/1	12.5	14.5	20	14.5	16.5	22	1400	1600	2000	40,000	G13	48	T8
433086	14.5T8/48-5000 IF 10/1	12.5	14.5	20	14.5	16.5	22	1450	1650	2100	40,000	G13	48	T8

## Installation Guide



## Instructions

1. Switch-off power to the luminaire
2. Remove diffuser (if provided)
3. Remove the existing fluorescent lamps from the luminaire.
  - Note: Verify the fluorescent tube type is listed on the label of Philips LED T8 InstantFit lamp
4. Install the Philips LED T8 InstantFit lamp (one for each fluorescent lamp removed).
5. Replace diffuser (if removed in step 2).
6. Switch on power to the luminaire.

**CAUTION** – IF THE LAMP OR LUMINAIRE EXHIBITS UNDESIRABLE OPERATION (BUZZING, FLICKERING, ETC.), IMMEDIATELY TURN OFF POWER, REMOVE LAMP FROM LUMINAIRE AND CONTACT THE MANUFACTURER

**CAUTION** – RISK OF FIRE. DO NOT INSTALL IN A PRE-HEAT LUMINAIRE

**CAUTION** – THIS PRODUCT MAY CAUSE INTERFERENCE TO RADIO EQUIPMENT AND SHOULD NOT BE INSTALLED NEAR MARITIME SAFETY COMMUNICATIONS EQUIPMENT OR OTHER CRITICAL NAVIGATION OR COMMUNICATION EQUIPMENT OPERATING BETWEEN 0.45 – 30MHZ.

THESE DEVICES ARE NOT INTENDED FOR USE WITH EMERGENCY EXIT FIXTURES OR EMERGENCY EXIT LIGHTS.

THIS LAMP ONLY OPERATES ON ELECTRONIC BALLASTS. IF LAMP DOES NOT LIGHT WHEN THE LUMINAIRE IS ENERGIZED, REMOVE LAMP FROM LUMINAIRE AND CONTACT LAMP MANUFACTURER OR QUALIFIED ELECTRICIAN

Lamps must be operated within an ambient fixture temperature of -4F (-20c) and 113F (45c) to ensure UL compliance.



© 2013 Koninklijke Philips N.V.  
All rights reserved.  
Printed in USA 09/13

[www.philips.com](http://www.philips.com)

Philips Lighting  
A Division of Philips North America  
200 Franklin Square Drive  
Somerset, NJ 08873  
Phone: 855-486-2216

Philips Lighting  
A Division of Philips Canada  
281 Hillmount Road  
Markham, Ontario  
Canada L6C 2S3  
Phone: 800-555-0050