



T5

24T5HO/46-850/IF35/P/DIM 10/1

Philips LED T5 InstantFit Lamps are an ideal energy saving choice for existing linear fluorescent fixtures.

Product data

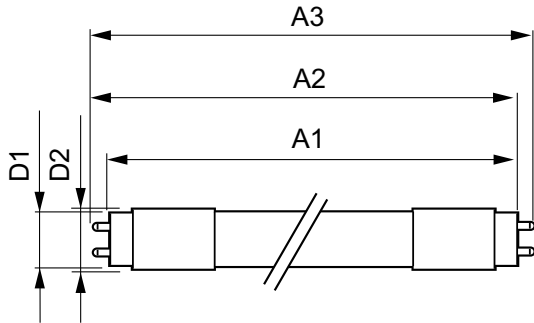
General Information		Power Factor (Nom)	
Base	G5 [G5]		0.9
EU RoHS compliant	Yes	Voltage (Nom)	39-64 V
Nominal Lifetime (Nom)	50000 h	Temperature	
Switching Cycle	50000X	T-Ambient (Max)	45 °C
		T-Ambient (Min)	-20 °C
		T-Storage (Max)	65 °C
		T-Storage (Min)	-40 °C
		T-Case Maximum (Nom)	45 °C
Light Technical		Controls and Dimming	
Color Code	850 [CCT of 5000K]	Dimmable	Yes
Beam Angle (Nom)	140 °	Mechanical and Housing	
Initial lumen (Nom)	3500 lm	Bulb Material	Plastic
Color Designation	Daylight	Product Length	48 in
Correlated Color Temperature (Nom)	5000 K	Approval and Application	
Luminous Efficacy (rated) (Nom)	145.00 lm/W	Energy Efficiency Label (EEL)	Not applicable
Color Consistency	<5	Energy Saving Product	Yes
Color Rendering Index (Nom)	82	Approbation Marks	UL certificate RoHS compliance DLC compliance
LLMF At End Of Nominal Lifetime (Nom)	70 %	Energy Consumption kWh/1000 h	- kWh
		Energy Certifications	DLC Standard
Operating and Electrical			
Input Frequency	40000-80000 Hz		
Power (Rated) (Nom)	24 W		
Lamp Current (Max)	600 mA		
Lamp Current (Min)	400 mA		
Starting Time (Nom)	0.5 s		
Warm Up Time to 60% Light (Nom)	0.5 s		
UL Type	Type A - works on ballast		

T5

Product Data	
Order product name	24T5HO/46-850/IF35/P/DIM 10/1
EAN/UPC - Product	046677467159
Order code	467159
Numerator - Quantity Per Pack	1
Numerator - Packs per outer box	10

Material Nr. (12NC)	929001284004
Net Weight (Piece)	0.170 kg
Model Number	9290012840

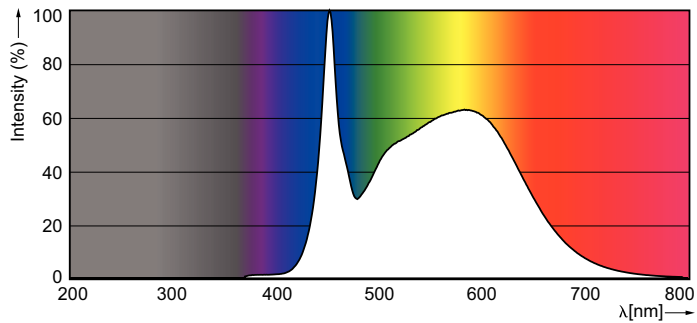
Dimensional drawing



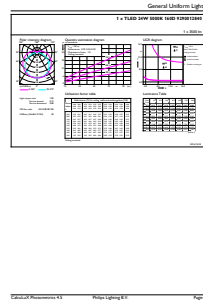
TLED 120V 24-54W 3600lm 5000K G5

Product	D1	D2	A1	A2	A3
24T5HO/46-850/IF35/P/DIM 10/1	15.2 mm	17.8 mm	1147.8 mm	1154.9 mm	1162 mm

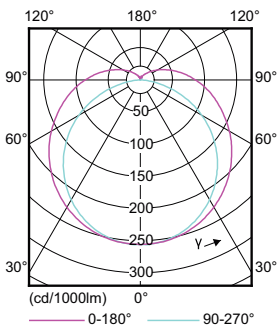
Photometric data



LEDtube 1100mm 24W G5 850 3500lm



LEDtube 1100mm 24W G5 850 3500lm



LEDtube 1100mm 24W G5 850 3500lm

