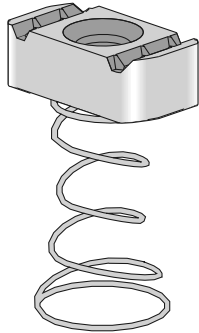


Finish: Electro-galvanized Order By: No. and Size and Finish

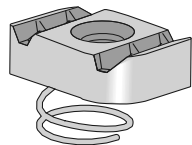
PS LS – Clamping Nut with Long Spring



Size	Threads	Wt./100 pcs
1/4"	20	7.5
3/8"	16	10.2
1/2"	13	12.3
5/8"	11	15.8
3/4"	10	14.1

Use With: PS 100 and PS 150 Channel.

PS SS – Clamping Nut with Short Spring

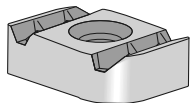


Size	Threads	Wt./100 pcs
#8-32	32	7.0
#10-24	24	7.0
#10-32	32	7.0
1/4"	20	6.9
5/16"	18	6.7
3/8"	16	9.6
1/2"	13*	8.8
5/8"	11*	11.5
3/4"	10*	10.0

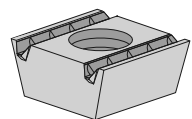
Use With: PS 400, PS 500 and PS 520 channel.

*PS SS 1/2" and PS SS 5/8" nuts have 3/8" body thickness.

PS NS – Clamping Nut without Spring



Size	Threads	Wt./100 pcs
#8-32	32*	8.0
#10-32	32*	6.6
#10-24	24*	6.7
1/4"	20*	6.6
5/16"	18*	6.4
3/8"	16*	9.3
1/2"	13	11.4

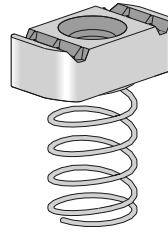


Size	Threads	Wt./100 pcs
5/8"	11	15.2
3/4"	10	13.0
7/8"	9	14.0

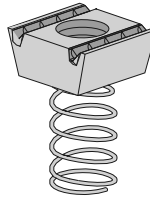
Use With: PS 100, PS 150, PS 200, PS 210 and PS 300 channel.

*Can be used with PS 400, PS 500, PS 520 and PS 560 channel.

PS RS – Clamping Nut with Long Spring



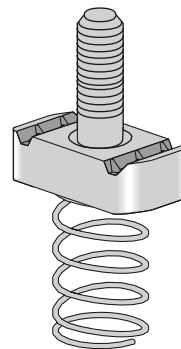
Size	Threads	Wt./100 pcs
#10-24	24	7.2
#10-32	32	7.2
1/4"	20	7.1
5/16"	18	7.0
3/8"	16	9.9
1/2"	13	11.9



Size	Threads	Wt./100 pcs
5/8"	11	15.5
3/4"	10	13.8
7/8"	9	14.3

Use With: PS 200, PS 210 and PS 300 Channel.

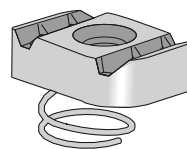
PS 517 – Channel Nut with Stud



Size	Wt./100 pcs
1/4" x 1"	8.1
1/4" x 1 1/4"	8.3
1/4" x 1 1/2"	8.6
1/4" x 2"	9.1
3/8" x 1"	13.0
3/8" x 1 1/4"	14.0
3/8" x 1 1/2"	14.0
3/8" x 2"	15.0
1/2" x 1"	15.0
1/2" x 1 1/4"	16.0
1/2" x 1 1/2"	17.0
1/2" x 2"	19.0

Use With: PS 200, PS 210 and PS 300 channel.

PS NS S – Shallow Clamping Nut without Spring



Size	Threads	Wt./100 pcs
1/2"	13	6.9
5/8"	11	9.7
3/4"	10	8.4

Use With: PS 500 and PS 520 channel.