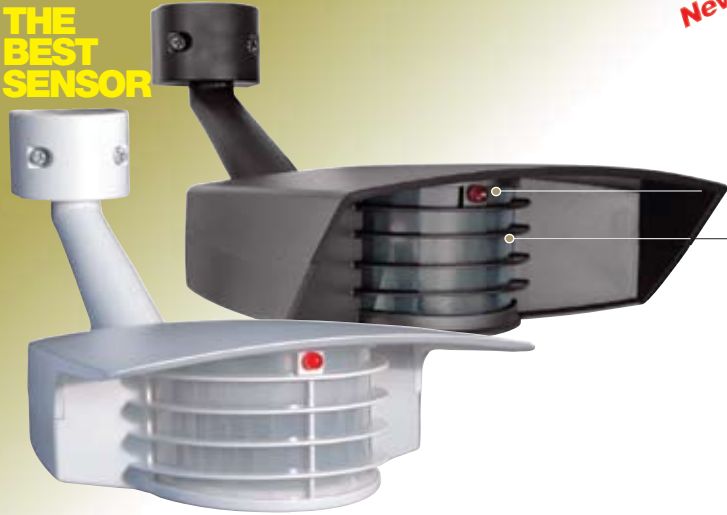


# OUTDOOR SENSORS

## STEALTH®

THE BEST SENSOR



STEALTH is the "Pro's Choice" for reliability with hundreds of thousands of satisfied customers.

1000 watt Switching Capacity

Temperature Compensation

**New!** Easy to read controls

Radio Frequency Immunity

6000 volt Surge Protection

Quick Test Time

LED Detection & "On Guard" Indicator

Color Matched Vandal Resistant Lens and Grill

Pre-wired and Pre-assembled on CU4 Universal EZplate

Protected Manual Override with Auto Reset

Auto Test Logic

White or Bronze Finish

Can be wired in parallel

Comprehensive manuals

10 Year Warranty



## STEALTH Rates Best. Here's Why:

**BEST!**

### Surge Protection

STEALTH MOV (metal oxide varistor) surge protection withstands 6000 volts while the competition fries. Can you afford problems due to power quality and lightning?

**BEST!**

### Radio Frequency Immunity

STEALTH isn't fooled by RF signals while the competition false triggers. Can you afford a sensor that turns on every time a cellular phone or fire/police radio is operated nearby?

**BEST!**

### All Season Sensitivity

STEALTH Automatic Temperature Compensation operates flawlessly in both cold and hot weather. Other brands become too sensitive in cold and fail to turn on when it's hot. Can you afford a sensor that needs adjustment every time the weather changes?

**BEST!**

### Reduced False Triggering

STEALTH advanced detection logic, electronic vibration filtering and aerodynamic rain shedding case minimize false triggering. STEALTH gives you control over responsiveness and range from 30% to 100%.

**BEST!**

### Quick Test Time

STEALTH is easy to install and easy to test. A 5 minute Test Period allows aiming and walk testing day or night. During the Test Period, the sensor keeps lights on for 5 seconds each time it detects movement. During daytime the LED shows when STEALTH detects.



## Specifications

### UL Listing:

Suitable for wet locations

### Switching Capacity:

8 amps, 1000 watts incandescent @ 120 volts

### Voltage:

120 volts AC 60Hz. Also available in 12 volt AC/DC (96 watts capacity) and 240 volt / 50 & 60 hertz models. Consult factory for special voltages.

### Power Consumption:

1 watt

### Time Adjustment:

5 seconds to 12 minutes

### Surge Protection:

Withstands up to 6000 volts

### Wide Sensitivity Control:

Adjustable from 100% to 30%

### Temperature Compensation:

Sensitivity adjusts automatically for consistent detection in hot and cold ambient temperatures.

### Wall Switch Manual Override:

Two flip logic prevents activation by momentary power outages. Override resets to auto at dawn. No extra wiring needed.

### LED Detection Indicator:

Shows when sensor is detecting in daytime and glows red at night for "on-guard" deterrence.

### Auto Test Logic:

5 minutes of test time when powered. Resets to auto mode without further adjustment.

### Lens Masks:

Customized plastic, snap-on lens mask included to reduce coverage easily



### Advanced Detection Logic:

Minimizes false triggers

### Color Matched Lens:

Dark lens with bronze units, white lens with white units

### RF Immunity:

Circuits fully shielded for maximum radio frequency immunity.

### Horizontal Lock, No-tool Joints:

Keeps sensing pattern level for fast, error-free installation.

### Photoelectric Control:

Deactivates lights during daylight. Fully adjustable for 24 hour operation or custom applications.

### Patents:

RAB sensor and fixture designs are protected under U.S. and international intellectual property laws.

[www.rabweb.com](http://www.rabweb.com)  
Wiring Diagrams  
Installation Instructions  
Product Specifications

**STEALTH110**

STEALTH Sensor with 110° view, Double Look Down Lens, Surge Protection, LED Detection Indicator and Color Matched Lens. See page 24 for floodlight kits.

Finish: ● Bronze  
○ White



**STEALTH200**

The STEALTH sensor with special 200° detection pattern to provide wide coverage side to side. Excellent for building perimeter protection. Lens masks allow customization of detection zone. See page 24 for floodlight kits.

Finish: ● Bronze  
○ White



**STEALTH12 Volt**

STEALTH110 sensor for 12 volt AC/DC systems. Great for controlling low voltage lighting or security systems. 96 watt switching capacity.

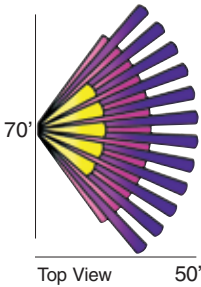
Finish: ● Bronze



**Detection Patterns**

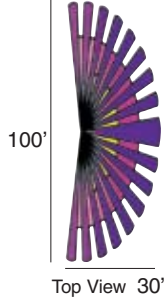
**110° Detection**

Standard 110° wide pattern reaches 50' out & 70' wide

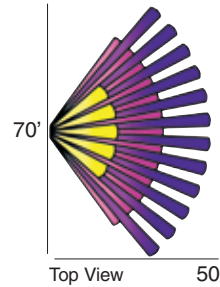


**200° Detection**

Covers 100' along the sides of building with 200° detection



**110° Detection**



**Catalog Numbers**

Bronze	White
STL110	STL110W

Bronze	White
STL200	STL200W

Bronze
STL12LV

**Dimensions**

