



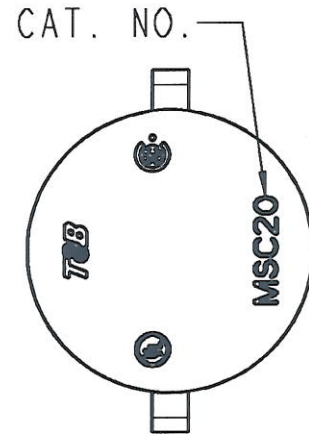
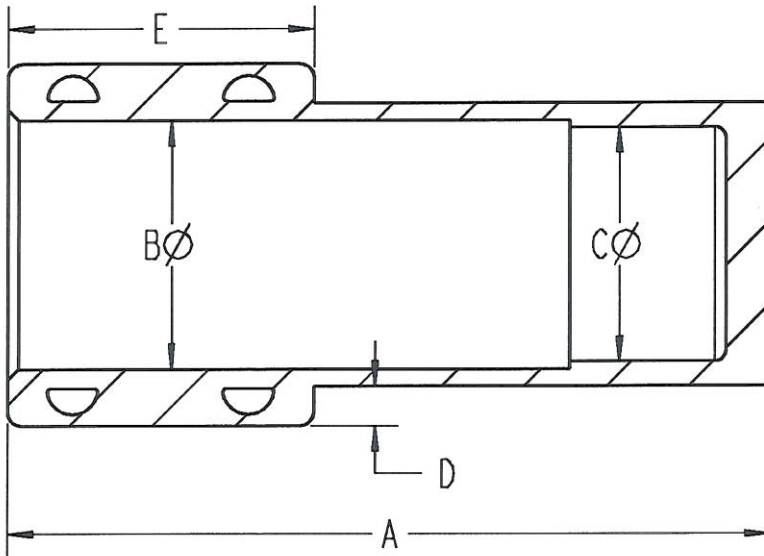
# Sta-Kon



INSULATOR CAT NO.	WIRE RANGE
MSC14	# 14 THRU #10
MSC8	#12 THRU #8
MSC2	#12 THRU #2
MSC20	#2 THRU 2/0
MSC250	3/0 THRU 300 MCM
MSC500	350 THRU 500 MCM

UL AND CSA CERTIFIED ( 94V-1 FLAMMABILITY CLASS)  
RATED FOR 600 VOLTS

1. BODY MATERIAL: MODIFIED NEOPRENE ELASTOMER
2. STRAP MATERIAL: NYLON
3. ALL ITEMS HAVE TWO NYLON CABLE TIES EXCEPT FOR MSC14 WHICH HAS ONLY ONE TIE.



#### GENERAL NOTES

1. ALL DIMENSIONS ARE FOR REFERENCE ONLY.
2. DIMENSIONS IN BRACKETS [ ] ARE IN METRIC UNITS.

www.tnb.com

DESCRIPTION:

**T&B MOTOR STUB  
SPLICE INSULATOR**

**Thomas & Betts**  
A Member of the ABB Group

#### REVISIONS

SEE ERN \*\*\*\*\*  
FOR APPROVAL SIGNATURES  
& RELEASE DATE.  
PROJECT NO: \*\*\*\*\*

ORIGINAL PROJECT NO / ( ERN NO )

017V000507 / ( 2015477 )

SHEET NO:

1 OF 2

REV. NO:

-

DRAWING NO:

**WSD-000523**

THIS DRAWING IS INTENDED FOR DESCRIPTIVE PURPOSES ONLY. AND THE RIGHT IS RESERVED TO DEVIATE FROM ANY OF THE DETAILS SHOWN HEREON.  
COPYRIGHT THOMAS & BETTS CORPORATION. ALL RIGHTS RESERVED. PROPRIETARY AND CONFIDENTIAL.

INSULATOR CAT NO.	WIRE RANGE	LUGS						TERMINALS	BOLT MAXIMUM LENGTH IN INCH	A +/- .062	B $\phi$ +/- .031	C $\phi$ +/- .031	D +/- .031	E +/- .062
		2 HOLE COLOR-K EYD LUGS (AL-CU WIRE)	1 HOLE COLOR-K EYD LUGS (AL-CU WIRE)	2 HOLE CAST COPPER LUGS (CU WIRE)	1 HOLE CAST COPPER LUGS (CU WIRE)	2 HOLE CAST COPPER LUGS (CU WIRE)	1 HOLE COLOR-K EYD LUGS (AL-CU WIRE)							
MSC14 $\Phi$	# 14 THRU #10	-----	-----	-----	-----	-----	14RB4 THRU 14RB10 RB14-4 THRU RB14-10	10RC6 THRU 10RC10 RC10-6 THRU RC10-10	3/8	1.500	.555	.495	.375	.350
MSC8	#12 THRU #8	-----	-----	-----	-----	-----	-----	-----	3/8	2.390	.725	.665	.375	1.200
MSC2	#12 THRU #2	-----	-----	53204 53205 53206	54105 54106	54204 54205 54206	-----	-----	3/4	3.250	.947	.877	.375	1.500
MSC20	#2 THRU 2/0	60230 60236	60118 THRU 60138	53207 53208	53107 53108	54207 54208	-----	-----	1	4.250	1.385	1.305	.425	1.700
MSC250	3/0 THRU 300 MCM	20238 THRU 60256	60140 THRU 60157	53209 THRU 53213	53109 THRU 53113	54209 THRU 54214	-----	-----	1-1/2	7.562	1.875	1.795	.445	1.900
MSC500	350 THRU 500 MCM	60260 THRU 60273	60165 THRU 60172	53215 THRU 53218	53115 THRU 53118	54215 THRU 54218	-----	-----	1-3/4	8.875	2.582	2.482	.445	2.100

**Thomas & Betts**  
A Member of the ABB Group

www.fnb.com

DESCRIPTION: **T&B MOTOR STUB  
SPLICE INSULATOR**

SHEET NO: <b>2 OF 2</b>	REV. NO: -	DRAWING NO: <b>WSD-000523</b>
----------------------------	---------------	----------------------------------

THIS DRAWING IS INTENDED FOR DESCRIPTIVE PURPOSES ONLY, AND THE RIGHT IS RESERVED TO DEVIATE FROM ANY OF THE DETAILS SHOWN HEREON. COPYRIGHT THOMAS & BETTS CORPORATION. ALL RIGHTS RESERVED. PROPRIETARY AND CONFIDENTIAL.