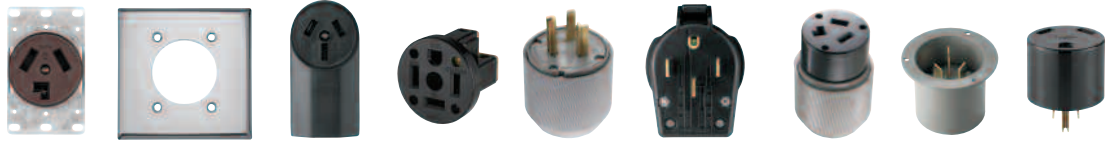


## Straight Blade Power Devices - 20, 30, 50 & 60A



Rating: Amps V/AC	Receptacle/ Plug NEMA Configuration	Flush Receptacle	Wallplate	Surface Receptacle	Panel Mount Receptacle	Plugs	Angle Plugs	Connectors	Flanged Inlets	Adapters	
<b>2-Pole, 3-Wire Grounding</b>											
30A 125V	 5-30R  5-30P	Commercial: <b>1233</b> (Brown) Industrial: <b>5716N</b> (Black)	Standard Size: <b>39CH, 68, 2068, 2168, 93221, 93227</b>			Industrial: <b>5717N</b> (Gray)	Commercial: <b>S41</b> (Black) Industrial: <b>5717AN</b> (Gray)	Industrial: <b>6716N</b> (Gray & Black)	Industrial: <b>5717NFI</b> (Gray)		
30A 125V	 TT-30R  TT-30P	Commercial: <b>1263</b> (Black)			Commercial: <b>U1263</b> (Black)		Commercial: <b>83</b> (Black)			Commercial: <b>1264</b> TT-30 (Plug to NEMA 5-15R or 5-20R) (Black)	
30A 250V	 6-30R  6-30P	Commercial: <b>1234</b> (Brown) Industrial: <b>5700N</b> (Black)			Commercial: <b>1232</b> (Black)		Industrial: <b>5701N</b> (Gray)	Commercial: <b>S42</b> (Black) Industrial: <b>5701AN</b> (Gray)	Industrial: <b>6700N</b> (Gray & Black)	Industrial: <b>5701NFI</b> (Gray)	
30A 277V	 7-30R  7-30P	Industrial: <b>5795N</b> (Black)		Mid-Size: <b>5068, PJ703, PJ724</b>			Industrial: <b>5703N</b> (Gray)	Industrial: <b>5703AN</b> (Gray)	Industrial: <b>6795N</b> (Gray & Black)	Industrial: <b>5703NFI</b> (Gray)	
50A 125V	 5-50R  5-50P	Commercial: <b>1253</b> (Brown)					Industrial: <b>5712N</b> (Gray)	Commercial: <b>S41</b> (Black) Industrial: <b>5712AN</b> (Gray)	Industrial: <b>6711N</b> (Gray & Black)	Industrial: <b>5712NFI</b> (Gray)	
50A 250V	 6-50R  6-50P	Commercial: <b>1254</b> (Brown) Industrial: <b>5709N</b> (Black)			Commercial: <b>1252</b> (Black)		Industrial: <b>5710N</b> (Gray)	Commercial: <b>S42</b> (Black) Industrial: <b>5710AN</b> (Gray)	Industrial: <b>6709N</b> (Gray & Black)	Industrial: <b>5710NFI</b> (Gray)	
50A 277V	 7-50R  7-50P						Industrial: <b>5705N</b> (Gray)	Industrial: <b>5705AN</b> (Gray)	Industrial: <b>6796N</b> (Gray & Black)	Industrial: <b>5705NFI</b> (Gray)	
<b>3-Pole, 3-Wire Non-Grounding</b>											
20A 125/250V	 10-20R  10-20P	Commercial: <b>805</b> (Ivory)				Industrial: <b>9151N</b> (Gray) Commercial: <b>2836</b> (Armd PVC) (Yellow)					
30A 125/250V Dryer	 10-30R  10-30P	Commercial: <b>38B</b> (Brown)	Standard Size: <b>39CH, 68, 2068, 2168, 93221, 93227</b>	Commercial: <b>125</b> (Black)		Industrial: <b>9337N</b> (Gray)	Commercial: <b>S80</b> (Black) Industrial: <b>9352AN</b> (Gray)	Industrial: <b>9341N</b> (Gray & Black)	Industrial: <b>9337NFI</b> (Gray)		
50A 125/250V Range	 10-50R  10-50P	Commercial: <b>32B</b> (Brown) Industrial: <b>7985N</b> (Black) Commercial: <b>122B</b> (Brown)	Mid-Size: <b>5068, PJ703, PJ724</b> Standard Size: <b>192</b>	Commercial: <b>112</b> (Black)		Industrial: <b>4524N</b> (Gray)	Commercial: <b>S80</b> (Black) Industrial: <b>7952AN</b> (Gray)	Industrial: <b>4526N</b> (Gray & Black)	Industrial: <b>4524NFI</b> (Gray)		

Power Device Dimensional Information: B-24; Specification Information: B-31-B-33