

# **BALDOR**® • ***RELIANCE***

## **Product Information Packet**

### **VM3542**

**.75HP,1725RPM,3PH,60HZ,56C,3420M,TEFC,F1**

| Part Detail |      |                |       |             |          |               |            |
|-------------|------|----------------|-------|-------------|----------|---------------|------------|
| Revision:   | AB   | Status:        | PRD/A | Change #:   |          | Proprietary:  | No         |
| Type:       | AC   | Prod. Type:    | 3420M | Elec. Spec: | 34WG0883 | CD Diagram:   | CD0005     |
| Enclosure:  | TEFC | Mfg Plant:     |       | Mech. Spec: | 34A063   | Layout:       | 34LYA063   |
| Frame:      | 56C  | Mounting:      | F1    | Poles:      | 04       | Created Date: |            |
| Base:       | N    | Rotation:      | R     | Insulation: | B        | Eff. Date:    | 03-15-2016 |
| Leads:      | 9#18 |                |       |             |          | Replaced By:  |            |
| Literature: |      | Elec. Diagram: |       |             |          |               |            |

| Nameplate NP1256L |                 |  |      |    |     |      |  |                |     |   |
|-------------------|-----------------|--|------|----|-----|------|--|----------------|-----|---|
| CAT.NO.           | VM3542          |  |      |    |     |      |  |                |     |   |
| SPEC.             | 34A63-883       |  |      |    |     |      |  |                |     |   |
| HP                | .75             |  |      |    |     |      |  |                |     |   |
| VOLTS             | 208-230/460     |  |      |    |     |      |  |                |     |   |
| AMP               | 3.2-3/1.5       |  |      |    |     |      |  |                |     |   |
| RPM               | 1725            |  |      |    |     |      |  |                |     |   |
| FRAME             | 56C             |  |      |    | HZ  | 60   |  |                | PH  | 3 |
| SER.F.            | 1.25            |  | CODE | K  | DES | B    |  | CLASS          | B   |   |
| NEMA-NOM-EFF      | 75.5            |  | PF   | 60 |     |      |  |                |     |   |
| RATING            | 40C AMB-CONT    |  |      |    |     |      |  |                |     |   |
| CC                |                 |  |      |    |     |      |  | USABLE AT 208V | 3.6 |   |
| DE                | 6203            |  |      |    | ODE | 6203 |  |                |     |   |
| ENCL              | TEFC            |  | SN   |    |     |      |  |                |     |   |
|                   | SFA 3.6-3.4/1.7 |  |      |    |     |      |  |                |     |   |

**AC Induction Motor Performance Data**  
Record # 6605 - Typical performance - not guaranteed values

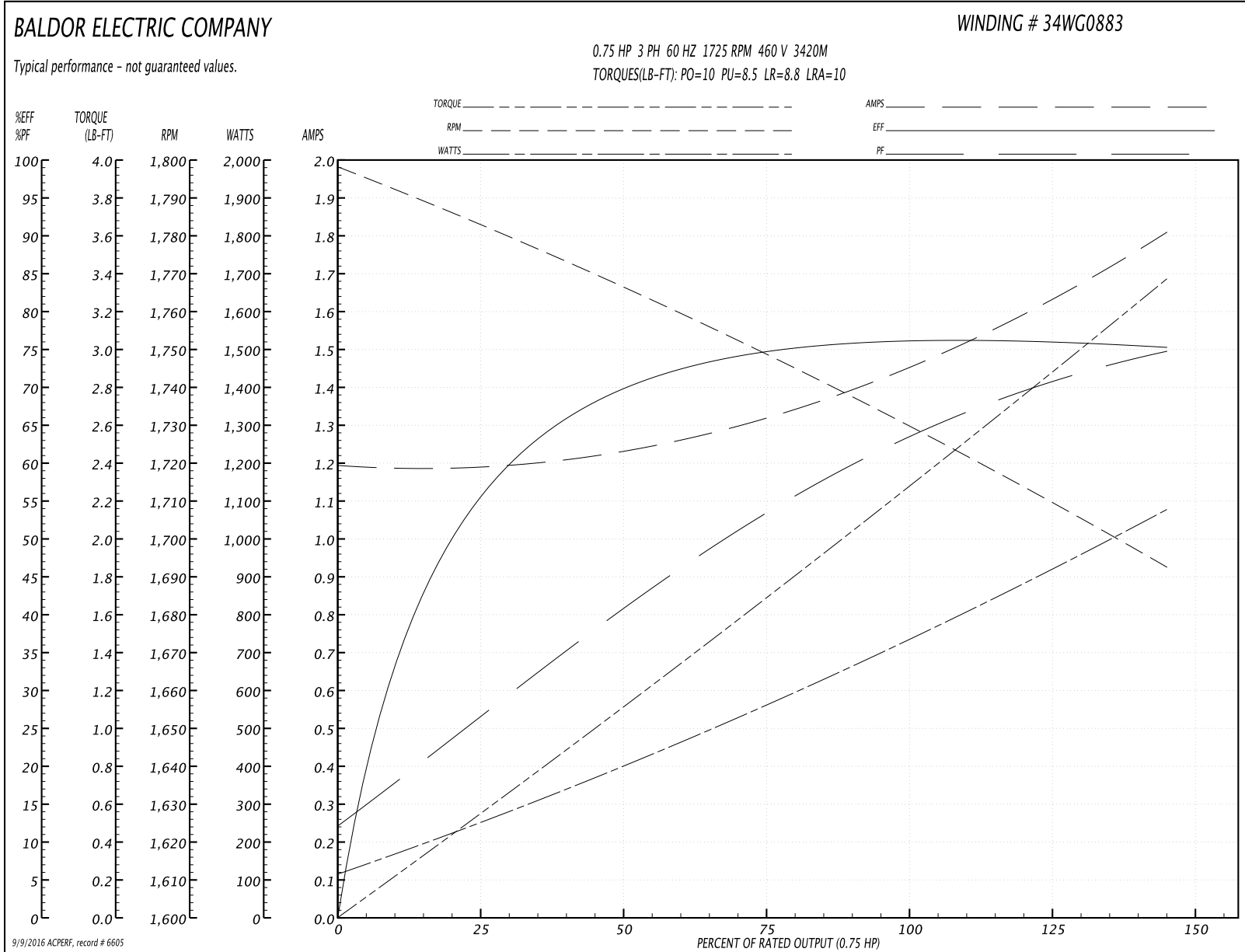
|                               |                    |                        |
|-------------------------------|--------------------|------------------------|
| <b>Winding:</b> 34WG0883-R001 | <b>Type:</b> 3420M | <b>Enclosure:</b> TEFC |
|-------------------------------|--------------------|------------------------|

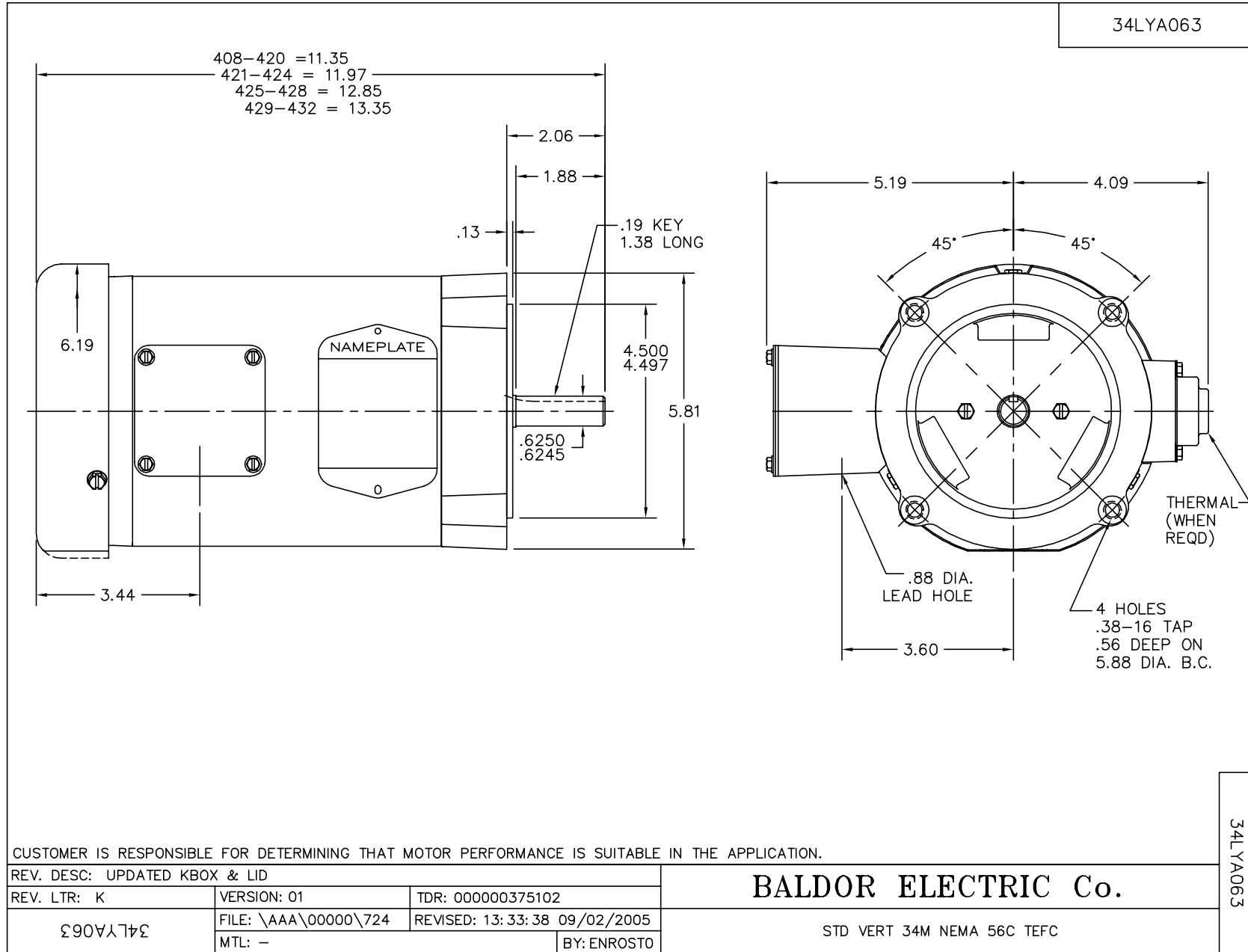
| Nameplate Data        |              |              |    | 460 V, 60 Hz:<br>High Voltage Connection |                |
|-----------------------|--------------|--------------|----|--|----------------|
| Rated Output (HP)     | .75          |              |    | Full Load Torque                         | 2.25 LB-FT     |
| Volts                 | 208-230/460  |              |    | Start Configuration                      | direct on line |
| Full Load Amps        | 3.2-3/1.5    |              |    | Breakdown Torque                         | 10 LB-FT       |
| R.P.M.                | 1725         |              |    | Pull-up Torque                           | 8.5 LB-FT      |
| Hz                    | 60           | Phase        | 3  | Locked-rotor Torque                      | 8.8 LB-FT      |
| NEMA Design Code      | B            | KVA Code     | K  | Starting Current                         | 10 A           |
| Service Factor (S.F.) | 1.25         |              |    | No-load Current                          | 1.2 A          |
| NEMA Nom. Eff.        | 75.5         | Power Factor | 60 | Line-line Res. @ 25°C                    | 17.68 Ω        |
| Rating - Duty         | 40C AMB-CONT |              |    | Temp. Rise @ Rated Load                  | 74°C           |
| S.F. Amps             | 3.6-3.4/1.7  |              |    | Temp. Rise @ S.F. Load                   | 91°C           |

**Load Characteristics 460 V, 60 Hz, 0.75 HP**

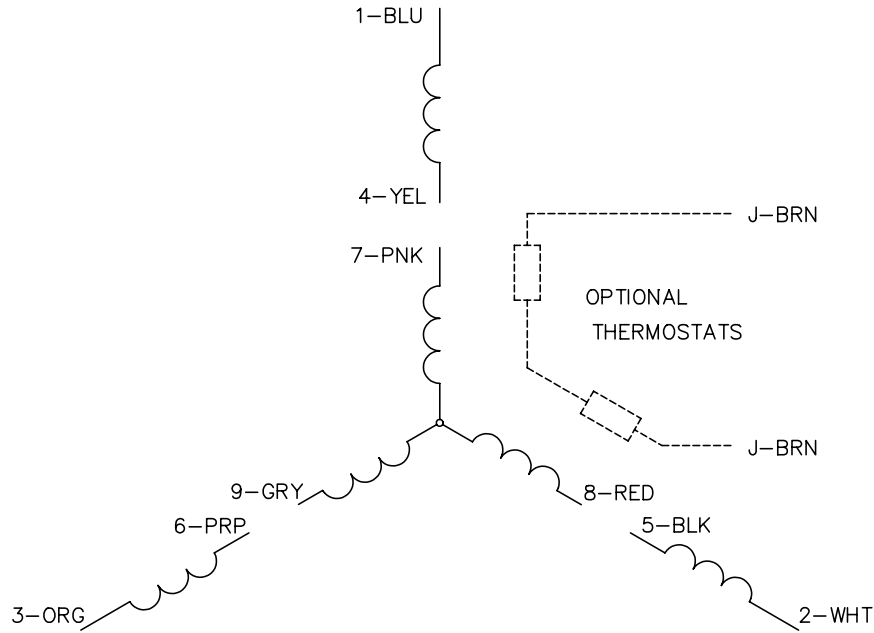
| % of Rated Load | 25   | 50   | 75   | 100  | 125  | 150  | S.F. |
|-----------------|------|------|------|------|------|------|------|
| Power Factor    | 28   | 42   | 55   | 64   | 71   | 76   | 71   |
| Efficiency      | 56.1 | 69.7 | 74.7 | 76.2 | 76.1 | 75.2 | 76.1 |
| Speed           | 1783 | 1766 | 1749 | 1731 | 1711 | 1693 | 1711 |
| Line amperes    | 1.2  | 1.2  | 1.3  | 1.5  | 1.6  | 1.8  | 1.6  |

Performance Graph at 460V, 60Hz, 0.75HP Typical performance - Not guaranteed values

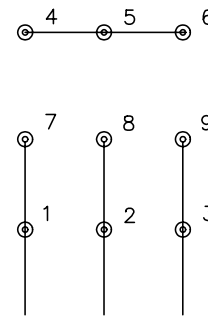




CD0005

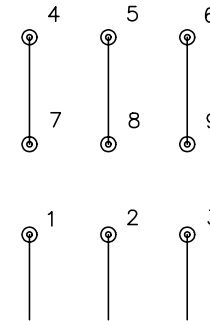


LOW VOLTAGE  
(2Y)



LINE

HIGH VOLTAGE  
(1Y)



LINE

NOTES:

1. INTERCHANGE ANY TWO LINE LEADS TO REVERSE ROTATION.
2. OPTIONAL THERMOSTATS ARE PROVIDED WHEN SPECIFIED.
3. ACTUAL NUMBER OF INTERNAL PARALLEL CIRCUITS MAY BE A MULTIPLE OF THOSE SHOWN ABOVE.
4. LEAD COLORS ARE OPTIONAL. LEADS MUST ALWAYS BE NUMBERED AS SHOWN.

|   |         |                         |              |
|---|---------|-------------------------|--------------|
| REV. DESC: REVISE TO SHOW OPTIONAL COLORS |         |                         |              |
| REV. LTR: E                               | BY: JLP | REVISED: 01/19/99 10:15 | TDR: 0171435 |
| 900000                                    |         | FILE: AAA00005140       | MDL: -       |
|   |         | MTL: -                  |              |

**BALDOR ELECTRIC Co.**

3PH, DV, 9 LEADS

CD0005