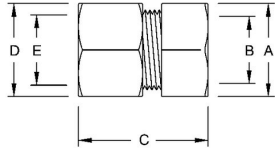


**TWO PIECE CONNECTORS AND EMT TO RIGID THREADED/COMPRESSION COMBINATION COUPLINGS****EMT-Rigid Couplings Threaded/Compression Steel**
N/A**B18**

Catalog #: 1354

APPLICATIONS

For use when coupling rigid/IMC conduit to EMT conduit

Use RACO Cat. Nos. 1352 to 1354 when coupling threaded rigid/IMC conduit to EMT. Use RACO Cat. Nos. 1432 to 1434 when coupling unthreaded rigid/IMC conduit to EMT

PRODUCT FEATURES

All steel construction insures mechanical protection

All components are zinc electro plated for corrosion protection

UPC bar code fittings are individually polybagged with a preprinted UPC-A bar code, and packaged in pre-scored tear top cartons for an attractive presentation

N/A

UL LISTED

Standard 514B (1432 - 1434 only), UL File E195969

COMPLIANCES

MSDS

www.hubbell-rtb.com/certifications/Hubbell-RACO_MSDS_for_WP_Boxes_and_Fittings,January_2015.pdf**GENERAL PRODUCT INFORMATION**

Trade Size: 1 in.

DRAWING DIMENSIONS

Dimension A: 1-21/32 in.

Dimension B: 1-7/32 in.

Dimension C: 1-5/8 in.

Dimension D: 1-43/64 in.

Dimension E: 1-11/64 in.

PACKAGING

Package Type: Carton

Ship Carton Qty.: 25

Product UPC-A Labeled: No

Weight (Lbs. Per/C): 23.50

Ship Carton Length (in.): 6.38

Ship Carton Width (in.): 6.25

Ship Carton Height (in.): 4.63

Ctn Weight (Lbs.): 5.20

UPC Number: 050169013540

I2of5: 50050169013545