

T8

14T8/COR/48-840/IF21/G 10/1

Our TLEDs are available in InstantFit (Type A / Type C) or MainsFit (Ballast bypass / Type B) versions. The InstantFit lamps work on a broad variety of ballasts and LED drivers. Only InstantFit has over 15,000 lamp & ballast combinations delivering even light output, energy savings and a long lifetime. Our MainsFit products feature a double-ended design, simplifying installation while a proprietary safety circuit minimizes a shock risk. Lamp sizes range from 2-foot to 8-foot and U-bend with a variety of lumen outputs.

Product data

General Information	
Base	G13 [Medium Bi-Pin Fluorescent]
EU RoHS compliant	Yes
Nominal Lifetime (Nom)	50000 h
Switching Cycle	50000X
Light Technical	
Color Code	841 [CCT of 4100K (841)]
Initial lumen (Nom)	2100 lm
Correlated Color Temperature (Nom)	4000 K
Color Consistency	<6
Color Rendering Index (Nom)	82
LLMF At End Of Nominal Lifetime (Nom)	70 %
Operating and Electrical	
Input Frequency	25000-105000 Hz
Power (Rated) (Nom)	14 W
Lamp Current (Max)	260 mA
Lamp Current (Min)	100 mA
Starting Time (Nom)	0.5 s

Warm Up Time to 60% Light (Nom)	0.5 s
UL Type	Type A - works on ballast Type C - works with dedicated LED driver Type A+C - works with both ballasts and the LED driver
Power Factor (Nom)	0.9
Voltage (Nom)	120-277, 347 V
Temperature	
T-Ambient (Max)	45 °C
T-Ambient (Min)	-20 °C
T-Storage (Max)	65 °C
T-Storage (Min)	-40 °C
T-Case Maximum (Nom)	50 °C
Controls and Dimming	
Dimmable	No
Mechanical and Housing	
Product Length	1200 mm

T8

Approval and Application

Energy Efficiency Label (EEL)	Not applicable
Energy Saving Product	Yes
Approbation Marks	UL certificate RoHS compliance DLC compliance
Energy Certifications	DLC Standard

Product Data

Order product name	14T8/COR/48-840/IF21/G 10/1
--------------------	-----------------------------

EAN/UPC - Product	046677453251
Order code	470112
Numerator - Quantity Per Pack	1
Numerator - Packs per outer box	10
Material Nr. (12NC)	929001343234
Net Weight (Piece)	0.215 kg
Model Number	9290013432A

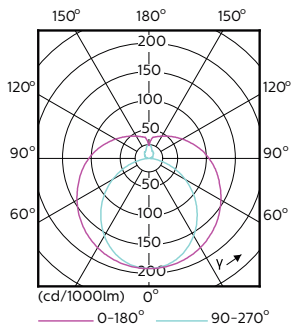
Dimensional drawing

A3

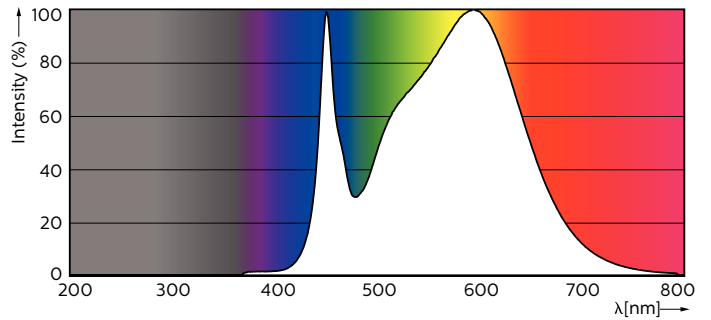
Product	D1	D2	A1	A2	A3
14T8/COR/48-840/IF21/G 10/1	25.7 mm	28 mm	1198 mm	1205 mm	1212 mm

14T8 PRO LED/48-4000 IF G 10/1

Photometric data

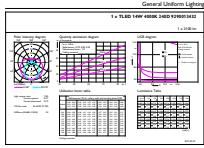


LEDtube 1200mm 17W G13 2100lm



LEDtube PRO 1200mm 14W G13 840 2100lm

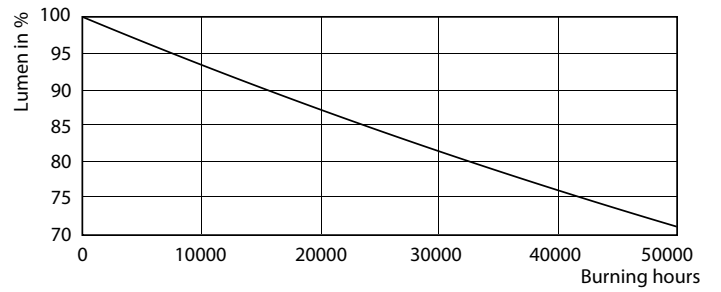
Photometric data



Contract Parameters 41 Photo Lighting 8.1 Page 17

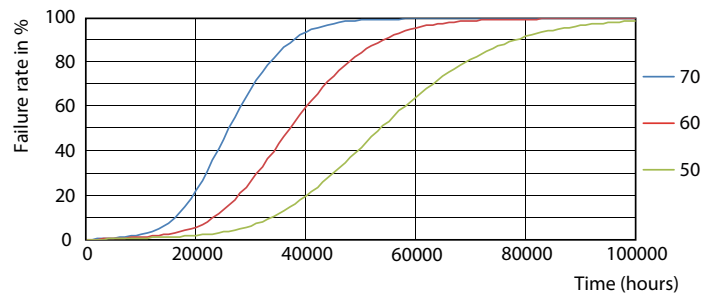
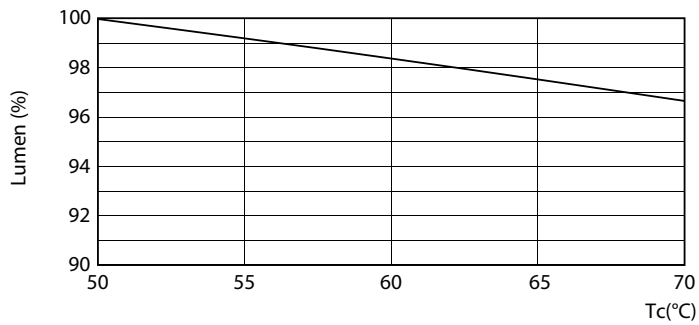
LEDtube PRO 1200mm 14W G13 840 2100lm

Lifetime



LEDtube PRO 1200mm 14W G13 2000lm

LEDtube PRO 1200mm 14W G13 2000lm

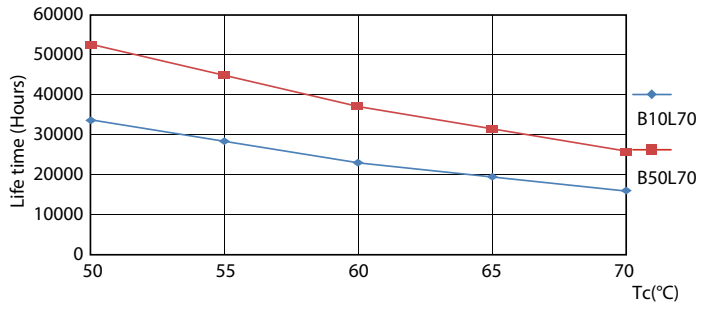


12W G13

12W G13

T8

Lifetime



12W G13

