



# LED InstantFit Lamps

## 16.5PL-L/PER/22/835/IF22/P 4P 10/1

Philips LED T8 InstantFit Lamps are an ideal energy saving choice for existing linear fluorescent fixtures.

### Product data

General Information	
Cap-Base	2G11 [ 2G11]
Nominal Lifetime (Nom)	50000 h
Switching Cycle	50000X
B50L70	50000 h
Light Technical	
Color Code	835 [ CCT of 3500K]
Beam Angle (Nom)	160 °
Luminous Flux (Nom)	2200 lm
Luminous Flux (Rated) (Nom)	2200 lm
Rated Beam Angle	160 °
Correlated Color Temperature (Nom)	3500 K
Color Consistency	<6
Color Rendering Index (Nom)	82
LLMF At End Of Nominal Lifetime (Nom)	70 %
Operating and Electrical	
Input Frequency	40000-160000 Hz
Power (Rated) (Nom)	16.5 W
Lamp Current (Max)	400 mA
Lamp Current (Min)	200 mA
Starting Time (Nom)	0.5 s
Warm Up Time to 60% Light (Nom)	0.5 s
Power Factor (Nom)	0.9

Voltage (Nom)	70-110 V
Temperature	
T-Ambient (Max)	45 °C
T-Ambient (Min)	-20 °C
T-Storage (Max)	65 °C
T-Storage (Min)	-40 °C
T-Case Maximum (Nom)	75 °C

Controls and Dimming	
Dimmable	No

Approval and Application	
Energy Saving Product	Yes
Approval Marks	UL certificate RoHS compliance DLC compliance

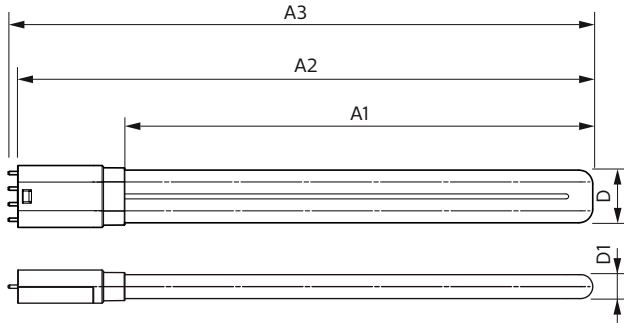
Product Data	
Order product name	16.5PL-L/PER/22/835/IF22/P 4P 10/1
EAN/UPC - Product	046677532901
Order code	929001893604
Numerator - Quantity Per Pack	1
Numerator - Packs per outer box	10
Material Nr. (12NC)	929001893604
Net Weight (Piece)	0.170 kg

# LED InstantFit Lamps

## Warnings and Safety

- Philips LED T8 InstantFit lamps will only operate properly on compatible instant-start ballasts. Please refer to the Philips LED T8 InstantFit Installation Guide, which can be obtained through your local Philips Sales Representative, or visit [www.philips.com/tled](http://www.philips.com/tled)

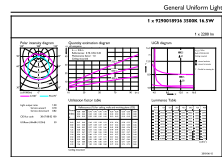
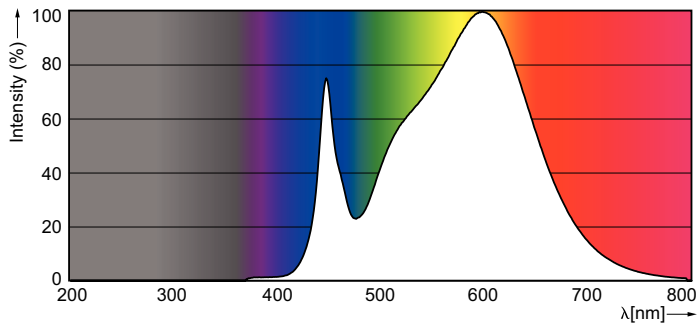
## Dimensional drawing



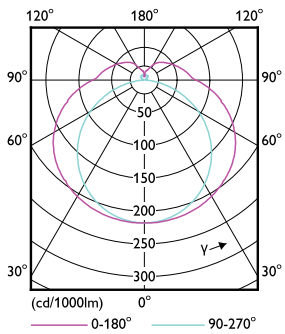
**PLED PLL 120V 14-40W 2100lm 3500K 2G11**

Product	D	D1	A1	A2	A3
16.5PL-L/PER/22/835/IF22/P 4P 10/1	40.6 mm	20 mm	501 mm	564 mm	570.6 mm

## Photometric data



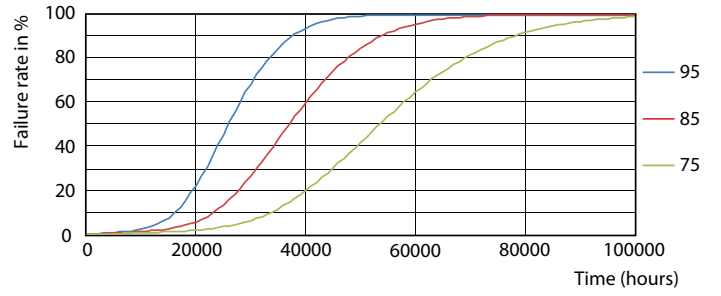
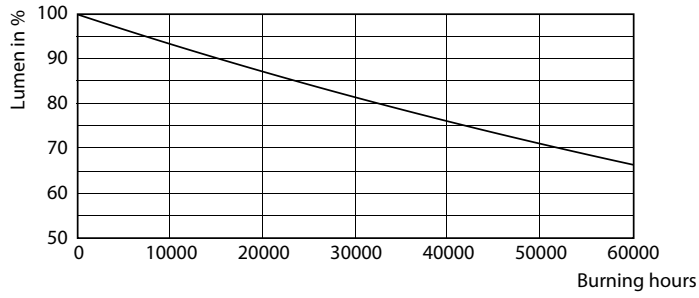
©2012 Philips Lighting B.V. All rights reserved. Page 1/1



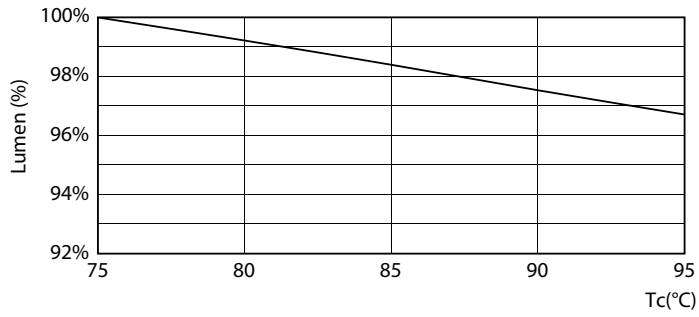
**16.5W 2G11 830 3000K**

# LED InstantFit Lamps

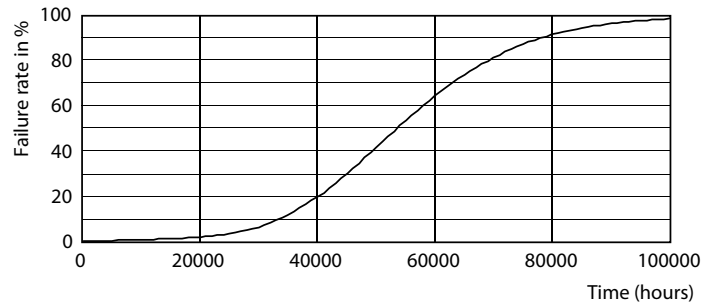
## Lifetime



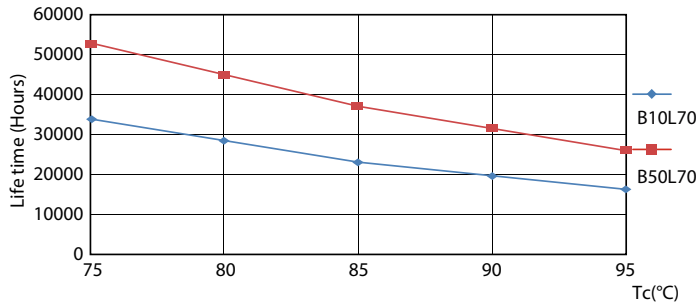
16-5W 2G11



16-5W 2G11



16-5W 2G11



16-5W 2G11

16-5W 2G11

## LED InstantFit Lamps

