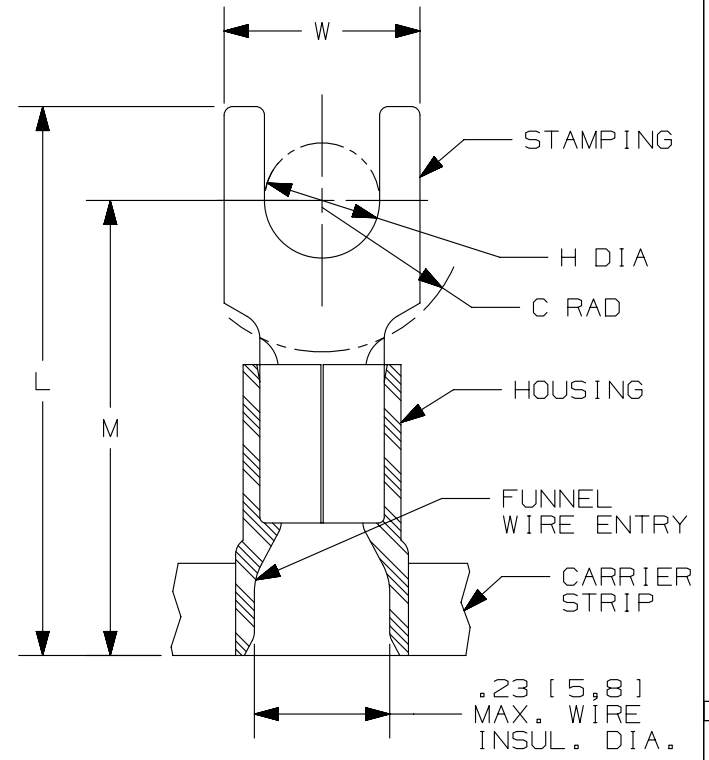


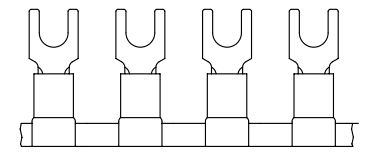
THIS COPY IS PROVIDED ON A RESTRICTED BASIS AND IS NOT TO BE USED IN ANY WAY DETRIMENTAL TO THE INTERESTS OF PANDUIT CORP.

PANDUIT PART #	STUD SIZE		DIMENSIONS in. [mm]				
	ENGLISH	METRIC	L ± .03 [0,76]	W ± .01 [0,25]	C ± .02 [0,51]	M ± .03 [0,76]	H ± .01 [0,25]
PV10-6FB	#6	M3, 5	.99 [25,2]	.30 [7,6]	.22 [5,6]	.78 [19,8]	.15 [3,8]
PV10-8FB	#8	M4	1.00 [25,4]	.30 [7,6]	.22 [5,6]	.78 [19,8]	.17 [4,3]
PV10-10FB	#10	--	1.04 [26,4]	.34 [8,6]	.22 [5,6]	.78 [19,8]	.20 [5,0]
PMV6-5FB	--	M5	1.02 [25,9]	.38 [9,7]	.24 [6,2]	.79 [20,1]	.21 [5,3]
PV10-14FB	1/4"	M6	1.13 [28,7]	.49 [12,5]	.32 [8,1]	.88 [22,4]	.27 [6,9]



NOTES:

- USED FOR:
 - A. #12-10 AWG [4,0-6,0 mm²] SOLID OR STRANDED COPPER WIRE
 - B. 221°F [105°C] MAX. OPERATING TEMPERATURE
 - C. 600 V. MAX. VOLTAGE RATING
- INSTALLATION TOOLS:
 - A. PRESSES: CP-871
 - B. APPLICATOR: CA-800, CA9
 - C. DIE INSERTS: CD-800-3, CD9-3B
- WIRE STRIP LENGTH: 11/32 ^{+1/32}₀ [8,7 ^{+0,8}]
- MATERIAL:
 - A. STAMPING: .04" [1,0] THK COPPER, TIN PLATED
 - B. HOUSING: VINYL, YELLOW
- SEE www.panduit.com FOR PACKAGE QUANTITIES INDICATED BY PART NUMBER SUFFIX
- DIMENSIONS IN BRACKETS ARE METRIC EQUIVALENT



LISTED
587H
E52164

CERTIFIED
LR31212

REV	DATE	BY	CHK	APR	DESCRIPTION	ECN
06	09.07.12	JBN	LCA	VMB	ADDED METRIC EQUIVALENT. REVISED NOTES. UPDATED DRAWING TO CURRENT STANDARDS.	A41079

TITLE		FORK TERMINALS, 2 PC. VINYL INSULATED, #12-10		
CUSTOMER DRAWING				
ITEM REVISION NAME		N41079BA/06		
DATASET FILE NAME		N41079BA_DC/06A		
UNLESS OTHERWISE SPECIFIED, DIMENSIONAL TOLERANCES ARE: IN [mm]		MATERIAL: SEE NOTES		
.x ± .1 [2.54] .xxx ± .005 [.13]		DRAWING NUMBER: A41079		
.xx ± .01 [.25] ANGLES ± 5°		THIRD ANGLE PROJECTION		
DRAWN BY	DATE	CHK	SCALE	SIZE
LM	-	-	N.T.S.	SHT 1 OF 1 A