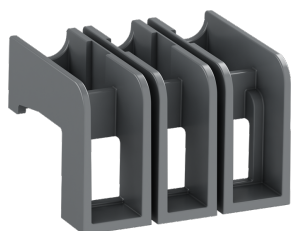


PRODUCT-DETAILS

# TS1-M3-S2

## TS1-M3-S2 Terminal Spacer



### General Information

Extended Product Type	TS1-M3-S2
Product ID	1SAM301912R1001
EAN	4013614556654
Catalog Description	TS1-M3-S2 Terminal Spacer
Long Description	MS132 Manual Motor Starters with screw terminals are approved as Self-Protected Combination Motor Controllers (Type E) acc. to UL60947-4-1. For this air clearance and creepage distances on the line side of MS132 must be increased, which can be achieved by either mounting S1-M3-25 or S1-M3-35 3- phase feeder blocks or by mounting TS1 terminal spacers. TS1 terminal spacers cannot be used for group installations that involve PS1 compact busbars.

### Ordering

Minimum Order Quantity	2 piece
Customs Tariff Number	85389099

### Popular Downloads

Instructions and Manuals	2CDC131022M6802 2CDC131057M6801 2CDC131159M6801
Instructions and Manuals (Part 2)	2CDC131060M0202

---

**Dimensions**


---

Product Net Width	44 mm
Product Net Height	52 mm
Product Net Depth / Length	29 mm
Product Net Weight	0.012 kg

---



---

**Technical**


---

Product Name	Terminal Spacer
Suitable For	MS132
Suitable for Product Class	Manual Motor Starter
Accessory Group	Mechanical
Accessory Type	Terminal Spacer

---



---

**Environmental**


---

RoHS Status	No declaration needed
-------------	-----------------------

---



---

**Certificates and Declarations (Document Number)**


---

Declaration of Conformity - CE	1SAD938519-0125 1SAD938510-0183
Declaration of Conformity - UKCA	1SAD938503-1125
Instructions and Manuals	2CDC131022M6802 2CDC131057M6801 2CDC131159M6801
Instructions and Manuals (Part 2)	2CDC131060M0202
RoHS Information	No declaration needed

---



---

**Container Information**


---

Package Level 1 Width	55 mm
Package Level 1 Depth / Length	70 mm
Package Level 1 Height	35 mm
Package Level 1 Gross Weight	0.03 kg
Package Level 1 EAN	4013614556661
Package Level 1 Units	box 2 piece

---



---

**Classifications**


---

ETIM 5	EC002498 - Accessories for low-voltage switch technology
ETIM 6	EC002498 - Accessories for low-voltage switch technology
ETIM 7	EC002498 - Accessories for low-voltage switch technology
ETIM 8	EC002498 - Accessories/spare parts for low-voltage switch technology
eClass	V11.0 : 27371392
UNSPSC	39121521

---

---

## Categories

---

Low Voltage Products and Systems → Control Products → Manual Motor Starters → Manual Motor Starters Accessories

