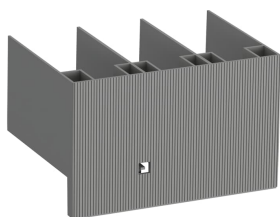


PRODUCT-DETAILS

ATK300/2

ATK300/2 Lug kit



General Information

Global Commercial Alias	ATK300/2
Extended Product Type	ATK300/2
Product ID	1SFN075417R1002
EAN	0662019702605
Catalog Description	ATK300/2 Lug kit
Long Description	ATK300/2 Lug kit

Technical

Suitable For	AF265 AF305 AF370 PSE210 PSE250 PSE300 PSE370 PSTX210 PSTX250 PSTX300 PSTX3770
Suitable for Product Class	Block Contactors Softstarters
Tightening Torque	Cable Lug 375 in.-lb

Environmental

RoHS Status	No declaration needed
-------------	-----------------------

Technical UL/CSA

Tightening Torque UL/CSA	Cable Lug 375 in-lb
-----------------------------	---------------------

Dimensions

Product Net Weight	0.25 kg
--------------------	---------

Ordering

Minimum Order Quantity	1 piece
Customs Tariff Number	85369010
UPC	662019702605

Certificates and Declarations (Document Number)

Declaration of Conformity - CE	NoDecNee
Instructions and Manuals	1SFC100088M0001

Popular Downloads

Instructions and Manuals	1SFC100088M0001
-----------------------------	-----------------

Classifications

EPLAN Catalog Tree	Electrical engineering / Terminals / General	
WEEE Category	Product Not in WEEE Scope	
WEEE B2C / B2B	Business To Business	
CN8	8536 90 10	
UNSPSC	39121432	
Object Classification Code		X

Categories

Low Voltage Products and Systems → Control Products → Contactors → Block Contactors Accessories

