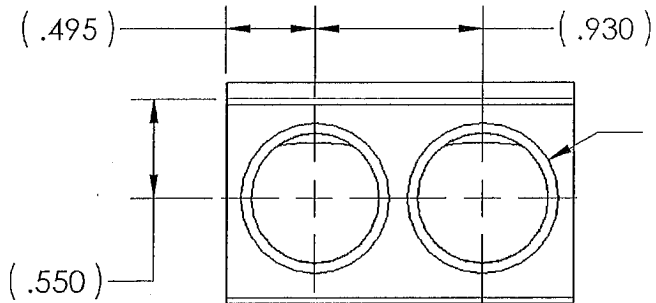
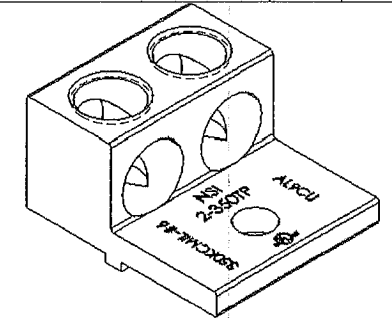


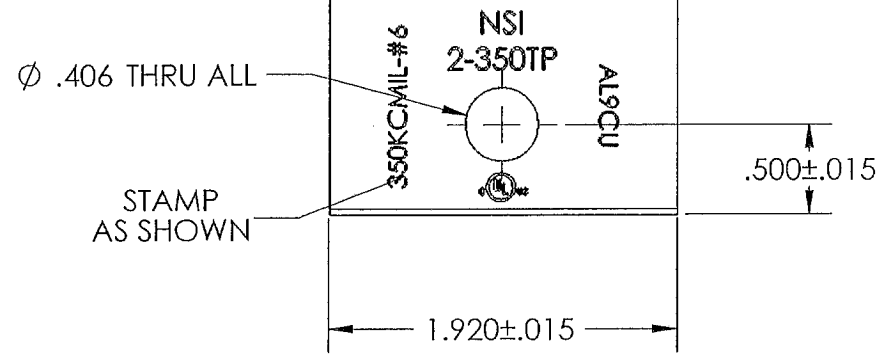
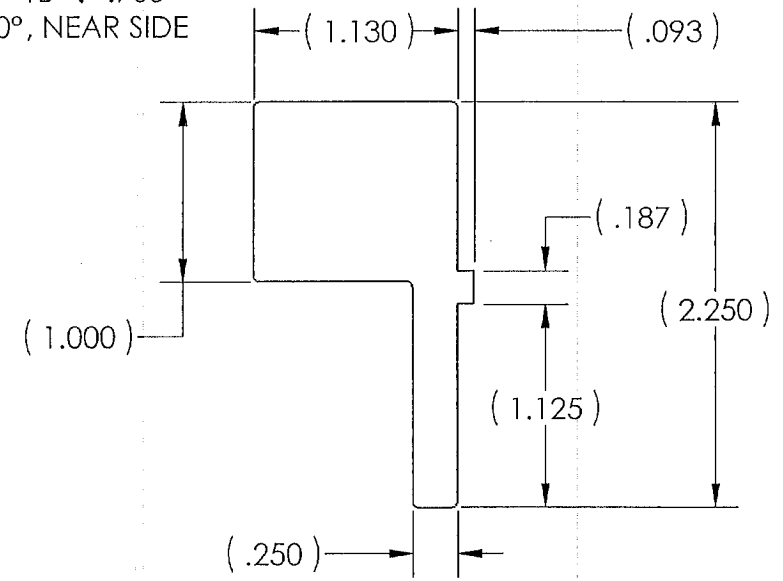
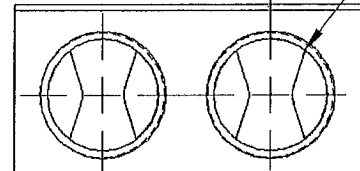
| PROGRAM: SOLIDWORKS VER: 2010 |                 | FILE NAME: 2-350TP.SLDPR1/SLDDR1W |               |
|-------------------------------|-----------------|-----------------------------------|---------------|
| REVISIONS                     |                 |                                   |               |
| REV.                          | DESCRIPTION     | DATE                              | LAST SAVED BY |
| A                             | INITIAL RELEASE | 1/18/2011                         | ihill         |



2X  $\phi$  .718  $\nabla$  1.000  
 $\checkmark$   $\phi$  .830 X 90°, NEAR SIDE



2X  $\phi$  .625  $\nabla$  .885  
 11/16-16 UN - 1B  $\nabla$  .765  
 $\checkmark$   $\phi$  .708 X 90°, NEAR SIDE



- NOTES:
- .0002-.0004 THICK TIN PLATE, AFTER PUNCH OPERATION.
  - MOUNT HOLE MUST BE WITHIN .015 OF CENTERLINE OF 1.920 DIMENSION.
  - PARTS MUST BE CLEAN AND FREE OF ALL BURRS.

|                              |  |
|------------------------------|--|
| PROPRIETARY AND CONFIDENTIAL |  |
|                              |  |

|                               |    |  |               |
|-------------------------------|----|--|---------------|
| <b>NSI</b><br><b>TORK</b>     |    | <b>NSI INDUSTRIES, LLC</b><br>USA • 800.321.5847 • www.nsiindustries.com |               |
| UNLESS OTHERWISE SPECIFIED:   |    | TITLE:   |               |
| DIMENSIONS ARE IN INCHES      |    | NSI 350 MCM, 2 PORT<br>AR MECH. LUG                                      |               |
| TOLERANCES:                   |    |  |               |
| FRACTIONAL = $\pm$ 1/64       |    |  |               |
| ANGULAR = $\pm$ 2°            |    |  |               |
| .XX = $\pm$ 0.010             |    | DWG. NO.   |               |
| .XXX = $\pm$ 0.005            |    | 2-350TP  |               |
| NAME                          |    | REV  |               |
| DATE                          |    | A  |               |
| DRAWN BY                      | KM | 01/18/2011   |               |
| DESIGNED BY                   |    | 01/18/2011   |               |
| MATERIAL: 6061-T6511 ALUMINUM |    | SCALE: 1:1   | SHEET: 1 OF 1 |