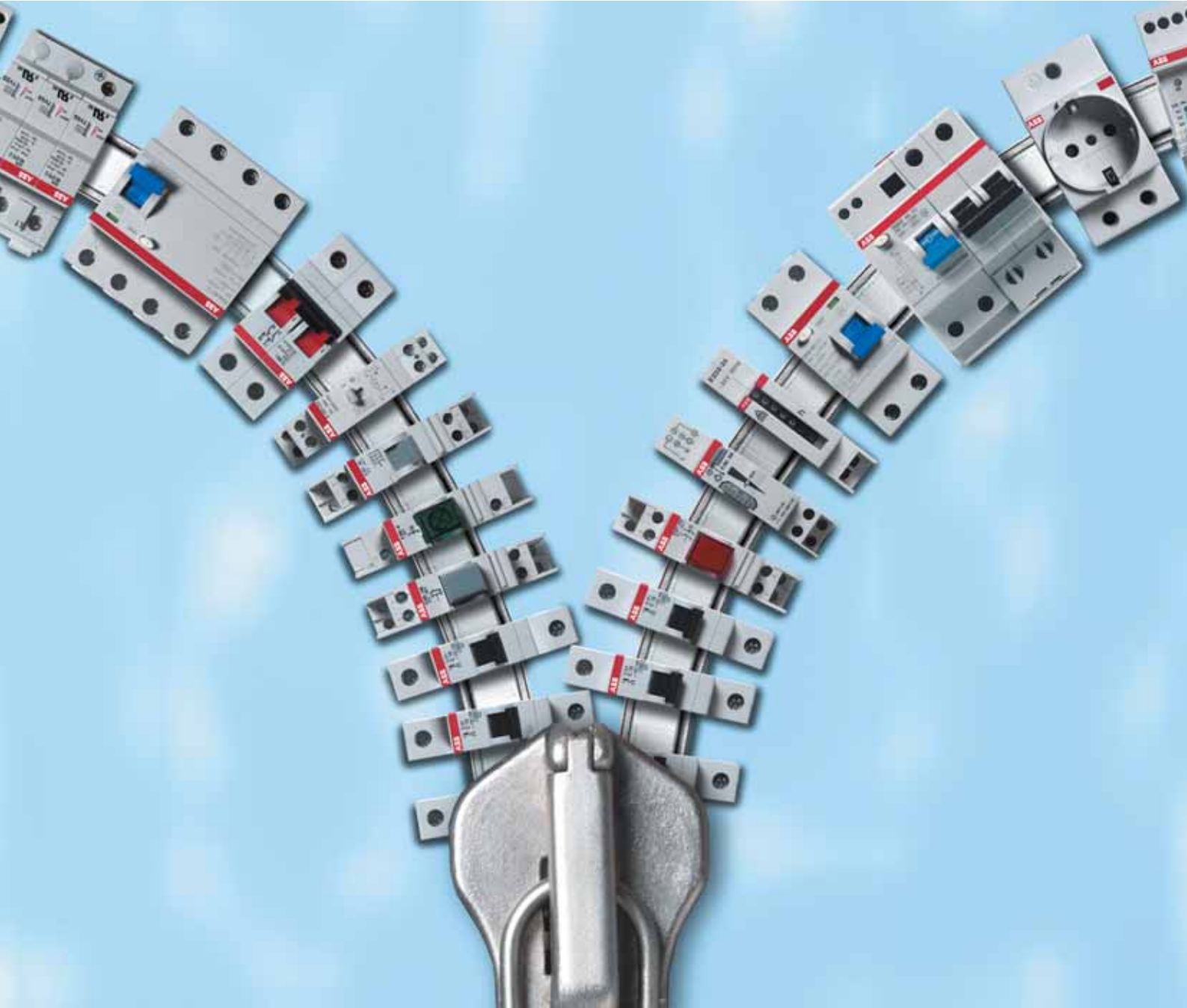


New System **pro M compact**[®]

All that you need.

2CSC004011B0201



ABB



New System **pro M compact**[®]

One range. All applications.



The new System pro *M* compact is the most complete range of miniature circuit breakers and residual current devices offered by the market. This range is suitable for all applications in residential, commercial and industrial instal-



lations. The new System pro *M* compact circuit breakers offer the best solutions for all plant requirements thanks to the state-of-the-art technological characteristics they feature.

This technology allowed us to create new versions and new technical solutions, and to obtain better electric performances.



For example they feature the highest resistance to short-circuit offered by the market, the AP-R version resistant to unwanted tripping in AC and A types.

The wide range of accessories allows versatile applications and offers the possibility to install up to three accessories at the same time. But these are not the only advantages of the new range.





New System **pro M compact**[®]

One range. Easy as you want.



The new range offers enormous advantages in relation to installation. Advanced and smart solutions allow a far easier and safer installation and guarantee time saving. One of the most important innovative solutions is the new bi-directional cylinder-lift terminal that allows easier and quicker connections. In addition it avoids errors because it prevents the use of free cable seats. This high protection level against



New technology of terminals for protection against misconnection.



Supply from top or bottom either with cables or busbars.



Seats for cables with different cross sections.

errors eliminates right from the start accidents deriving from incorrect wiring.



More working space between component rows.

The new terminal guarantees a very high tightening torque for cables with a section up to 25 mm². The housing of connection busbars in the rear seat guarantees easier wiring. And the new design, without shoulders and standardized for the whole range, offers



Auxiliary contact integrated to miniature circuit breakers

50% more working space guaranteeing more efficient wiring operations and in particular a far better visibility. Thanks to their patented relea-





se system they are the only RCCBs on the market that can be removed without the screwdriver.



Safe connection by unlosable coupling elements, pins and clamps.

A number of small but important details allows further time saving. New type and product code marked in front of the device for easier and quicker identifica-



Easy removal without screwdriver.

tion. Storage is easier, more practical and more economical thanks to the new multi-package with pre-cuts.



New System **pro M compact**[®]

One range.
Easy as you want.



The System **pro M compact**[®] range

- **MCBs**
 - new circuit breakers
- **RCDs**
 - new residual current circuit breakers (RCCBs)
 - new RCD-blocks
 - new residual current circuit breakers with overcurrent protection (RCBOs)
- **Auxiliary elements**
 - new universal signal contact switch/auxiliary switch
 - new auxiliary switch for circuit breaker extensions
 - new shunt trip
 - new undervoltage release
- **Overvoltage protection devices**
- **MDRCs-Protection devices**
- **MDRCs-Command devices**
- **MDRCs-Load management devices**
- **MDRCs-Measuring devices**
- **MDRCs-Various devices**
- **Various accessories**





New System **pro M compact**[®]

One range. All around the world.



The new System pro *M* compact not only represents the most complete and versatile range of circuit breakers on the market, but also the most universal one. Thanks to many international approvals and approvals from the major naval registers, the new System pro *M* compact can be installed almost all over the world.



In addition, for those markets with particular requirements, it offers customized versions.

One range for all applications, easy, quick and safe to install, and approved

all over the world... we can say that the new System pro *M* compact devices are the state-of-the-art in the world of miniature circuit breakers and residual current devices.

New System pro *M* compact. One range, perfect work.





ABB SACE S.p.A
ABB STOTZ-KONTAKT GmbH