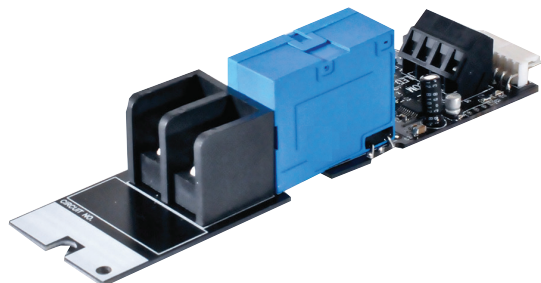


CX Commercial Lighting Control Panels



Project Name _____

Catalog No. _____ Date _____



CXR3L

The CX Panels four types of available CXR relays. Each relay is individually board-mounted and can be installed in any combination in the panel. Relays are offered in a variety of types and ratings to meet any project requirements. Types include electrically-held normally open (N/O), electrically-held normally closed (N/C), and latching.

Ratings are 20A/1P, 20A/2P and 30A/1P. Pre-Configured Panels are available with relays of the same type. Combinations of any relay types must be ordered separately and field installed into Space Only standard panels.

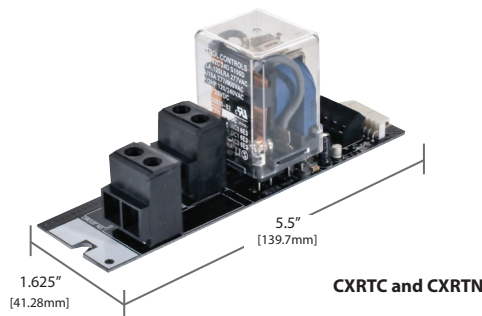
Product Features

- Compatible with all model CX panels
- Relays are individually replaceable
- Smart Relay Card self-identifies type automatically to panel
- Each relay includes 1 programmable input for low voltage switches, photocells, or motion sensors
- Plug-in connector to panel motherboard and a single screw to secure it to the panel enclosure
- Manual override control button and LED status indication
- Listed to UL916 standard, UL924 and Canadian cUL
- Five-year warranty

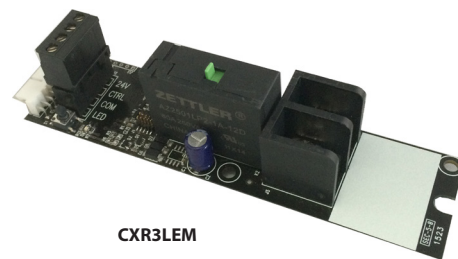
Compliance and Certification



Dimensions



CXRTC and CXRTN



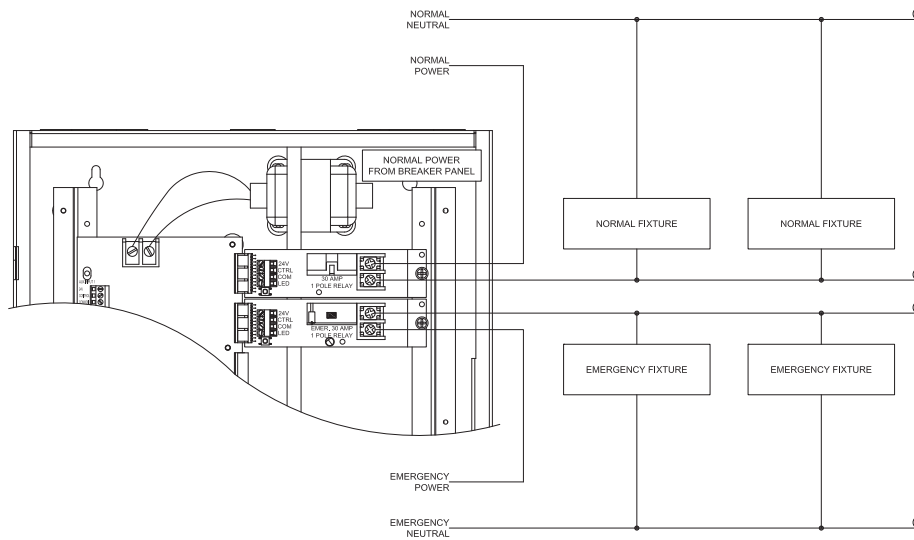
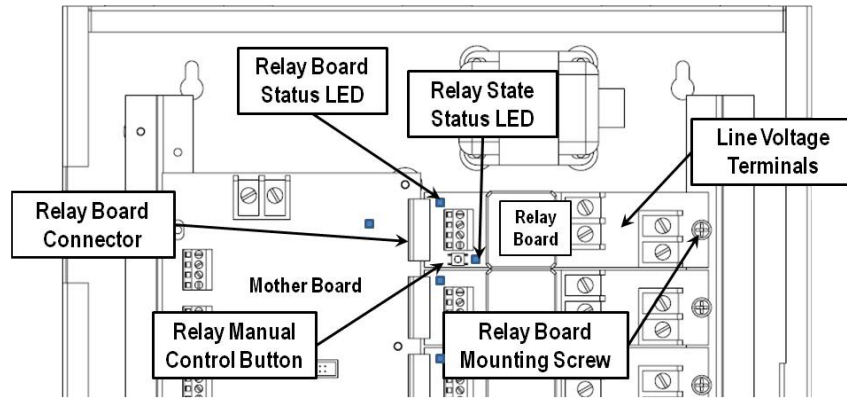
CXR3LEM

Ordering Information

CXR - _____

MODEL	RELAY TYPE
CXR	
2N	1-Pole, Elect. Held N.O. 20A@120VAC-Tungsten; 16A @ 277VAC-Elect. Ballast; 20A @277VAC-Mag. Ballast; 14K SCCR @277VAC
3L	1-Pole Latching 20A @120VAC-Tungsten; 16A @120/277VAC-Elect. Ballast; 30A @120/277VAC-Mag. Ballast; 20A @347VAC-Elect. Ballast; 18K SCCR @347VAC
3LEM	1-Pole, Latching 20A @120VAC-Tungsten; 16A @120/277VAC-Elect. Ballast; 30A @120/277VAC-Mag. Ballast; 20A @347VAC-Elect. Ballast; 20A @347VAC-Mag. Ballast; 5K SCCR @347VAC
TN	2-Pole, Elect. Held N.O. 20A @208/240/480VAC Mag. Ballast; 14K SCCR @480VAC
TC	2-Pole, Elect. Held N.O. 20A @208/240/480VAC Mag. Ballast; 14K SCCR @480VAC

Wiring Diagrams



Relay Specifications

Characteristics		Load Ratings					SCCR Rating
Type	Poles	VAC	Tungsten	Elect. Ballast	Magnetic Ballast	Motor Rating	
CXR2N - Elec. Held, N.O.	1	120	20A	N/A	N/A	3/4HP	14K
		277	N/A	16A	20A	3/4 HP	
CXR3L - Latching	1	120	20A	16A	30A	1 HP	18K Amps
		277	N/A	16A	30A	N/A	
		347	N/A	20A	N/A	N/A	
CXR3LEM - Latching *	1	120	20A	16A	30A	1 HP	5K Amps
		277	N/A	16A	30A	3/4 HP	
		347	20A	20A	20A	N/A	
CXRTN - Elec. Held, N.O.	2	208/240/480	N/A	N/A	20A	2 HP	14K Amps
CXRTC - Elec. Held, N.C.	2	208/240/480	N/A	N/A	20A	2 HP	

* Includes mechanical override lever, suitable for use on emergency lighting circuits

General Specifications

Operating Voltages	CXR2N 120/277VAC (50/60Hz) CXR3L 120/277/347VAC (50/60Hz) CXR3LEM 120/277/347VAC (50/60Hz) CXRTN 208/240/480VAC (50/60Hz) CXRTC 208/240/480VAC (50/60Hz)
Class 2 I/O output rating	CX04/CX08; 24VDC, 150mA (max. 300mA) CX16/CX24; 24VDC, 150mA (max. 900mA)
Class 2 I/O terminal	Wire size 14, 16, 18, 20, 22 AWG Recommended Tightening Torque: 0.45 N-m (4 in-lbs.)
Status Indicator	Green - Indicates relay is in closed position Red- Dependant on input being programmed
Operating environment	32°-112°F (0°-50°C) Relative humidity (non-condensing): 10%-90%
Inrush withstand	500A @ 2ms (CXR3LEM only)
Dimensions	1.625" W x 5.5"L (41.28mm W x 139.7mm L)
Mounting	Mounts inside a CX series panel Pre-drilled mounting hole for securing relay card Individual relay cards - 1P and 2P are equal size
Safety Standards	UL 916, CAN/CSA C22.2 No.205 UL 924, CAN/CSA C22.2 No. 141 Emergency Lighting (CXR3LEM)
Warranty	5 year limited