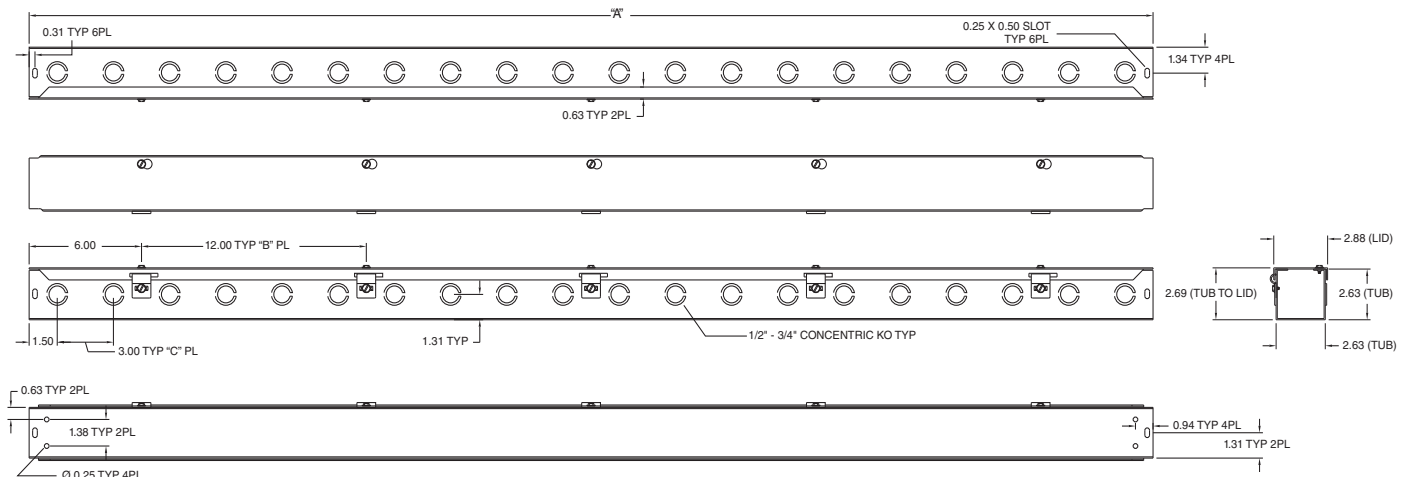


HS & S SERIES WIREWAY ACCESSORIES						
CATALOG NUMBER						DESCRIPTION
2.50 x 2.50 (64 x 64)	4.00 x 4.00 (102 x 102)	6.00 x 6.00 (152 x 152)	8.00 x 8.00 (203 x 203)	10.00 x 10.00* (254 x 254)	12.00 x 12.00* (305 x 305)	
E0202	E0404	E0606	E0808	—	—	End caps (with knockouts)
E0202NK	E0404NK	E0606NK	E0808NK	E1010NK	E1212NK	End caps (without knockouts)
T0202	T0404	T0606	T0808	T1010	T1212	Tee
X0202	X0404	X0606	X0808	X1010	X1212	Cross
AF0202	AF0404	AF0606	AF0808	AF1010	AF1212	Telescope
C0202	C0404	C0606	C0808	C1010	C1212	Connectors
PA0202	PA0404	PA0606	PA0808	PA1010	PA1212	Panel-Adapter
BH0202	BH0404	BH0606	BH0808	BH1010	BH1212	Bracket Hanger
—	R0402	R0604	R0806	R1008	R1208	Reducer
SL020290	SL040490	SL060690	SL080890	SL101090	SL121290	Sweep Elbow – 90°
L020290	L040490	L060690	L080890	L101090	L121290	Elbow – 90°
L020245	L040445	L060645	L080845	L101045	L121245	Elbow – 45°
S SERIES ACCESSORIES (GALVANIZED)						
—	E0404G	E0606G	E0808G	—	—	End caps (without knockouts)
E0202GNK	—	—	—	E1010GNK	E1212GNK	End caps (with knockouts)
T0202G	T0404G	T0606G	T0808G	T1010G	T1212G	Galvanized Tee
X0202G	X0404G	X0606G	X0808G	X1010G	X1212G	Galvanized Cross
AF0202G	AF0404G	AF0606G	AF0808G	AF1010G	AF1212G	Galvanized Telescope
C0202G	C0404G	C0606G	C0808G	C1010G	C1212G	Galvanized Connectors
PA0202G	PA0404G	PA0606G	PA0808G	PA1010G	PA1212G	Galvanized Panel-Adapter
BH0202G	BH0404G	BH0606G	BH0808G	BH1010G	BH1212G	Galvanized Bracket Hanger
—	R0402G	R0604G	R0806G	R1008G	R1208G	Galvanized Reducer
SL020290G	SL040490G	SL060690G	SL080890G	SL101090G	SL121290G	Galvanized Sweep Elbow – 90°
L020290G	L040490G	L060690G	L080890G	L101090G	L121290G	Galvanized Elbow – 90°
L020245G	L040445G	L060645G	L080845G	L101045G	L121245G	Galvanized Elbow – 45°

HS SERIES 2" STRAIGHT SECTION DIMENSIONS			
CATALOG NUMBER	A	B	C
HS221 & HS221NK	12.00 (300)	—	3.00 (75)
HS222 & HS222NK	24.00 (600)	1.00 (25)	7.00 (175)
HS223 & HS223NK	36.00 (900)	2.00 (50)	11.00 (275)
HS224 & HS224NK	48.00 (1200)	3.00 (75)	15.00 (375)
HS225 & HS225NK	60.00 (1500)	4.00 (100)	19.00 (475)
HS226 & HS226NK	72.00 (1800)	5.00 (125)	23.00 (575)
HS2210 & HS2210NK	120.00 (3000)	9.00 (225)	39.00 (975)

NK = No Knockouts



**HS SERIES 2" STRAIGHT SECTION DIMENSIONS**

PART NUMBER	PAGE	PART NUMBER	PAGE	PART NUMBER	PAGE	PART NUMBER	PAGE
JWN662.....	G12	L121290G.....	G2	LJW8QRSP.....	G8	LJWL908A.....	G8
JWN663.....	G12	LHPC02.....	G8	LJW902CCW.....	G8	LJWL908B.....	G8
JWN666.....	G12	LJW1261.....	G8	LJW902CW.....	G8	LJWL908C.....	G8
JWN881.....	G12	LJW12610.....	G8	LJW904CCW.....	G8	LJWN1266.....	G8
JWN882.....	G12	LJW1262.....	G8	LJW904CW.....	G8	LJWN221.....	G8
JWN883.....	G12	LJW1263.....	G8	LJW906CCW.....	G8	LJWN222.....	G8
JWN886.....	G12	LJW1264.....	G8	LJW906CW.....	G8	LJWN223.....	G8
JWRB42C.....	G12	LJW1265.....	G8	LJW908CCW.....	G8	LJWN226.....	G8
JWRB64C.....	G12	LJW126ASP.....	G8	LJW908CW.....	G8	LJWN441.....	G8
JWRB84C.....	G12	LJW126QRSP.....	G8	LJWA126.....	G8	LJWN442.....	G8
JWRB86C.....	G12	LJW21.....	G8	LJWA2.....	G8	LJWN443.....	G8
JWS2.....	G12	LJW210.....	G8	LJWA4.....	G8	LJWN446.....	G8
JWS4.....	G12	LJW21CCW.....	G8	LJWA6.....	G8	LJWN661.....	G8
JWS6.....	G12	LJW21CW.....	G8	LJWA8.....	G8	LJWN662.....	G8
JWS8.....	G12	LJW22.....	G8	LJWE126.....	G8	LJWN663.....	G8
JWSC22.....	G12	LJW23.....	G8	LJWE2.....	G8	LJWN666.....	G8
JWSC44.....	G12	LJW24.....	G8	LJWE4.....	G8	LJWN881.....	G8
JWSC66.....	G12	LJW25.....	G8	LJWE6.....	G8	LJWN882.....	G8
JWT2.....	G12	LJW2ASP.....	G8	LJWE8.....	G8	LJWN883.....	G8
JWT4.....	G12	LJW2QRSP.....	G8	LJWF126.....	G8	LJWN886.....	G8
JWT6.....	G12	LJW41.....	G8	LJWF2.....	G8	LJWRB1266.....	G8
JWT8.....	G12	LJW410.....	G8	LJWF4.....	G8	LJWRB42.....	G8
JWX2.....	G12	LJW41CCW.....	G8	LJWF6.....	G8	LJWRB64.....	G8
JWX4.....	G12	LJW41CW.....	G8	LJWF8.....	G8	LJWRB86.....	G8
JWX6.....	G12	LJW42.....	G8	LJWL45126A.....	G8	LJWS126.....	G8
JWX8.....	G12	LJW43.....	G8	LJWL452A.....	G8	LJWS2.....	G8
L020245.....	G2	LJW44.....	G8	LJWL452B.....	G8	LJWS4.....	G8
L020245G.....	G2	LJW45.....	G8	LJWL452C.....	G8	LJWS6.....	G8
L020290.....	G2	LJW4ASP.....	G8	LJWL454A.....	G8	LJWS8.....	G8
L020290G.....	G2	LJW4QRSP.....	G8	LJWL454B.....	G8	LJWT126A.....	G8
L040445.....	G2	LJW61.....	G8	LJWL454C.....	G8	LJWT2A.....	G8
L040445G.....	G2	LJW610.....	G8	LJWL456A.....	G8	LJWT2C.....	G8
L040490.....	G2	LJW61CCW.....	G8	LJWL456B.....	G8	LJWT4A.....	G8
L040490G.....	G2	LJW61CW.....	G8	LJWL456C.....	G8	LJWT4C.....	G8
L060645.....	G2	LJW62.....	G8	LJWL458A.....	G8	LJWT6A.....	G8
L060645G.....	G2	LJW63.....	G8	LJWL458B.....	G8	LJWT6C.....	G8
L060690.....	G2	LJW64.....	G8	LJWL458C.....	G8	LJWT8A.....	G8
L060690G.....	G2	LJW65.....	G8	LJWL90126A.....	G8	LJWT8C.....	G8
L080845.....	G2	LJW6ASP.....	G8	LJWL90126B.....	G8	LJWX126.....	G8
L080845G.....	G2	LJW6QRSP.....	G8	LJWL90126C.....	G8	LJWX2.....	G8
L080890.....	G2	LJW81.....	G8	LJWL902A.....	G8	LJWX4.....	G8
L080890G.....	G2	LJW810.....	G8	LJWL902B.....	G8	LJWX6.....	G8
L101045.....	G2	LJW81CCW.....	G8	LJWL902C.....	G8	LJWX8.....	G8
L101045G.....	G2	LJW81CW.....	G8	LJWL904A.....	G8	LOH100806.....	B8
L101090.....	G2	LJW82.....	G8	LJWL904B.....	G8	LOH121006.....	B8
L101090G.....	G2	LJW83.....	G8	LJWL904C.....	G8	LOH121206.....	B8
L121245.....	G2	LJW84.....	G8	LJWL906A.....	G8	LOH161206.....	B8
L121245G.....	G2	LJW85.....	G8	LJWL906B.....	G8	LOH161606.....	B8
L121290.....	G2	LJW8ASP.....	G8	LJWL906C.....	G8	LOH201606.....	B8