

# SureCrimp® Aluminum Compression Lugs

## Narrow Tang, 1 Hole, w/o Sight Hole

### Conductor Range: 1000kcmil - #4

## TYPE ALNN

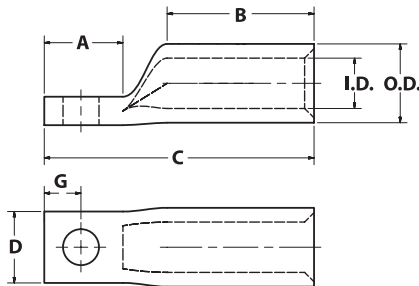
### Features

- Manufactured from high strength aluminum alloy
- Electro-Tin plated
- Chamfered entry
- Color coded end cap
- Roll marked
- Pre-filled with DE-OX® oxide inhibiting compound
- Range taking
- Narrow Tang
- Suitable for use in circuits rated 35KV or less, proper high voltage spacing and insulation techniques must be used
- Dual rated AL9CU to 90° C

### Benefits

- Offers maximum conductivity and excellent crimping characteristics
- Provides low contact resistance
- For easy conductor insertion
- Identifies the proper compression die
- For easy identification and proper location of crimps
- Prevents oxides from forming
- Permits inventories to be kept to a minimum
- Side by side mounting
- Application versatility
- For use with copper or aluminum conductor

A



Catalog Number	Wire Size	Expanded Wire Range*	Bolt Size	Stud Hole Dia.	Dimensions - in (mm)						Die Color Code	Die Index	
					A	B	C	D	G	O.D.			I.D.
ALNN-4-14	#4 AWG	4-6 AWG	1/4	0.281 (7.1)	0.875 (22.2)	0.920 (23.4)	2.029 (51.5)	0.412 (10.5)	0.321 (8.2)	0.427 (10.8)	0.247 (6.3)	Green	375
ALNN-2-14	#2 AWG	2-6 AWG	1/4	0.281 (7.1)	0.875 (22.2)	0.970 (24.6)	2.131 (54.1)	0.495 (12.6)	0.321 (8.2)	0.525 (13.3)	0.307 (7.8)	Pink	348
ALNN-1-14	#1 AWG	1-2 AWG	1/4	0.281 (7.1)	1.687 (42.8)	0.970 (24.6)	2.175 (55.2)	0.514 (13.1)	0.321 (8.2)	0.544 (13.8)	0.358 (9.1)	Gold	471
ALNN-1-516	#1 AWG	1-2 AWG	5/16	0.343 (8.7)	0.875 (22.2)	0.970 (24.6)	2.175 (55.2)	0.514 (13.1)	0.353 (9.0)	0.544 (13.8)	0.358 (9.1)	Gold	471
ALNN-1/0-516	#1/0 AWG	1/0-1 AWG	5/16	0.343 (8.7)	0.875 (22.2)	1.070 (27.2)	2.301 (58.4)	0.569 (14.5)	0.353 (9.0)	0.599 (15.2)	0.385 (9.8)	Tan	296
ALNN-2/0-38	#2/0 AWG	2/0-1 AWG	3/8	0.406 (10.3)	0.875 (22.2)	1.355 (34.4)	2.626 (66.7)	0.644 (16.4)	0.414 (10.5)	0.674 (17.1)	0.432 (11.0)	Olive	297
ALNN-3/0-38	#3/0 AWG	3/0-1 AWG	3/8	0.406 (10.3)	0.875 (22.2)	1.355 (34.4)	2.669 (67.8)	0.731 (18.6)	0.414 (10.5)	0.761 (19.3)	0.495 (12.6)	Ruby	467
ALNN-3/0-12	#3/0 AWG	3/0-1 AWG	1/2	0.562 (14.3)	1.250 (31.8)	1.355 (34.4)	3.044 (77.3)	0.731 (18.6)	0.546 (13.9)	0.761 (19.3)	0.495 (12.6)	Ruby	467
ALNN-4/0-38	#4/0 AWG	4/0-1 AWG	3/8	0.406 (10.3)	0.875 (22.2)	1.535 (39.0)	2.901 (73.7)	0.824 (20.9)	0.414 (10.5)	0.854 (21.7)	0.553 (14.0)	White	298
ALNN-4/0-12	#4/0 AWG	4/0-1 AWG	1/2	0.562 (14.3)	1.250 (31.8)	1.535 (39.0)	3.276 (83.2)	0.824 (20.9)	0.546 (13.9)	0.854 (21.7)	0.553 (14.0)	White	298
ALNN-250-38	250kcmil	250kcmil-1/0 AWG	3/8	0.406 (10.3)	0.875 (22.2)	1.535 (39.0)	2.941 (74.7)	0.894 (22.7)	0.414 (10.5)	0.924 (23.5)	0.595 (15.1)	Red	324
ALNN-250-12	250kcmil	250kcmil-1/0 AWG	1/2	0.562 (14.3)	1.250 (31.8)	1.535 (39.0)	3.316 (84.2)	0.894 (22.7)	0.546 (13.9)	0.924 (23.5)	0.595 (15.1)	Red	324
ALNN-300-38	300kcmil	300kcmil-2/0 AWG	3/8	0.406 (10.3)	0.875 (22.2)	1.535 (39.0)	2.997 (76.1)	0.980 (24.9)	0.414 (10.5)	1.010 (25.7)	0.650 (16.5)	Blue	470
ALNN-300-12	300kcmil	300kcmil-2/0 AWG	1/2	0.562 (14.3)	1.250 (31.8)	1.535 (39.0)	3.372 (85.6)	0.980 (24.9)	0.546 (13.9)	1.010 (25.7)	0.650 (16.5)	Blue	470
ALNN-350-12	350kcmil	350kcmil-3/0 AWG	1/2	0.562 (14.3)	1.250 (31.8)	2.353 (59.8)	4.226 (107.3)	1.075 (27.3)	0.546 (13.9)	1.105 (28.1)	0.720 (18.3)	Brown	299
ALNN-400-12	400kcmil	400kcmil-4/0 AWG	1/2	0.562 (14.3)	1.250 (31.8)	2.303 (58.5)	4.220 (107.2)	1.158 (29.4)	0.546 (13.9)	1.188 (30.2)	0.762 (19.4)	Green	472
ALNN-400-58	400kcmil	400kcmil-4/0 AWG	5/8	0.656 (16.7)	1.437 (36.5)	2.303 (58.5)	4.407 (111.9)	1.158 (29.4)	0.671 (17.0)	1.188 (30.2)	0.762 (19.4)	Green	472
ALNN-500-12	500kcmil	500kcmil-5/0 AWG	1/2	0.562 (14.3)	1.250 (31.8)	2.565 (65.2)	4.547 (115.5)	1.285 (32.6)	0.546 (13.9)	1.315 (33.4)	0.854 (21.7)	Pink	300
ALNN-500-58	500kcmil	500kcmil-5/0 AWG	5/8	0.656 (16.7)	1.437 (36.5)	2.565 (65.2)	4.734 (120.2)	1.285 (32.6)	0.671 (17.0)	1.315 (33.4)	0.854 (21.7)	Pink	300
ALNN-600-12	600kcmil	600kcmil-250kcmil	1/2	0.562 (14.3)	1.250 (31.8)	2.685 (68.2)	4.744 (120.5)	1.410 (35.8)	0.546 (13.9)	1.440 (36.6)	0.920 (23.4)	Black	473
ALNN-600-58	600kcmil	600kcmil-250kcmil	5/8	0.656 (16.7)	1.437 (36.5)	2.685 (68.2)	4.931 (125.2)	1.410 (35.8)	0.671 (17.0)	1.440 (36.6)	0.920 (23.4)	Black	473
ALNN-700/750-12	700/750kcmil	750kcmil-500kcmil	1/2	0.562 (14.3)	1.250 (31.8)	2.964 (75.3)	5.116 (129.9)	1.430 (36.3)	0.546 (13.9)	1.460 (37.1)	1.030 (26.2)	Yellow	936
ALNN-700/750-58	700/750kcmil	750kcmil-500kcmil	5/8	0.656 (16.7)	1.437 (36.5)	2.964 (75.3)	5.303 (134.7)	1.430 (36.3)	0.671 (17.0)	1.460 (37.1)	1.030 (26.2)	Yellow	936
ALNN-1000-12	1000kcmil	1000kcmil-750kcmil	1/2	0.562 (14.3)	1.250 (31.8)	2.996 (76.1)	5.271 (133.9)	1.578 (40.1)	0.546 (13.9)	1.840 (46.7)	1.180 (30.0)	Brown	P302
ALNN-1000-58	1000kcmil	1000kcmil-750kcmil	5/8	0.656 (16.7)	1.437 (36.5)	2.996 (76.1)	5.458 (138.6)	1.578 (40.1)	0.671 (17.0)	1.840 (46.7)	1.180 (30.0)	Brown	P302

For Tool and Die Information Refer to Tooling Information Page Series: ALNS, ALND, ALNN, ASN

\* When installed with specified dieless tools

Tested to UL 486A/B, UL File E6207

# SureCrimp® Aluminum Compression Lugs

## Narrow Tang, 2 Hole, w/o Sight Hole

### Conductor Range: 300kcmil - #4

**A**

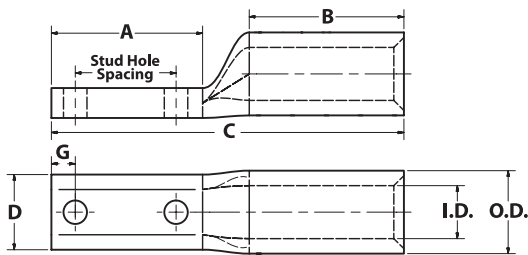
## TYPE ALNN

### Features

- Manufactured from high strength aluminum alloy
- Electro-Tin plated
- Chamfered entry
- Color coded end cap
- Roll marked
- Two bolt hole pattern
- Pre-filled with DE-OX® oxide inhibiting compound
- Range taking
- Narrow Tang
- Suitable for use in circuits rated 35KV or less, proper high voltage spacing and insulation techniques must be used
- Dual rated AL9CU to 90° C

### Benefits

- Offers maximum conductivity and excellent crimping characteristics
- Provides low contact resistance
- For easy conductor insertion
- Identifies the proper compression die
- For easy identification and proper location of crimps
- Provides maximum surface contact, secure attachment, and stabilization
- Prevents oxides from forming
- Permits inventories to be kept to a minimum
- Side by side mounting
- Application versatility
- For use with copper or aluminum conductor



Catalog Number	Wire Size	Expanded Wire Range*	Bolt Size	Stud Hole Dia.	Stud Hole Spacing	Dimensions - in (mm)							Die Color Code	Die Index
						A	B	C	D	G	O.D.	I.D.		
ALNN-4-14-1	#4 AWG	4-6 AWG	1/4	0.281 (7.1)	1.000 (25.4)	1.687 (42.8)	0.920 (23.4)	2.841 (72.2)	0.412 (10.5)	0.321 (8.2)	0.427 (10.8)	0.247 (6.3)	Green	375
ALNN-2-14-1	#2 AWG	2-6 AWG	1/4	0.281 (7.1)	1.000 (25.4)	1.687 (42.8)	0.970 (24.6)	2.943 (74.8)	0.495 (12.6)	0.321 (8.2)	0.525 (13.3)	0.307 (7.8)	Pink	348
ALNN-1-14-1	#1 AWG	1-2 AWG	1/4	0.281 (7.1)	1.000 (25.4)	1.687 (42.8)	0.970 (24.6)	2.987 (75.9)	0.514 (13.1)	0.321 (8.2)	0.544 (13.8)	0.358 (9.1)	Gold	471
ALNN-1/0-14-1	1/0 AWG	1/0-1 AWG	1/4	0.281 (7.1)	1.000 (25.4)	1.687 (42.8)	1.070 (27.2)	2.987 (75.9)	0.569 (14.5)	0.321 (8.2)	0.599 (15.2)	0.385 (9.8)	Tan	296
ALNN-2/0-38-1	2/0 AWG	2/0-1 AWG	3/8	0.406 (10.3)	1.000 (25.4)	1.937 (49.2)	1.355 (34.4)	3.688 (93.7)	0.644 (16.4)	0.414 (10.5)	0.674 (17.1)	0.432 (11.0)	Olive	297
ALNN-2/0-38-134	2/0 AWG	2/0-1 AWG	3/8	0.406 (10.3)	1.750 (44.5)	2.625 (66.7)	1.355 (34.4)	4.376 (111.2)	0.644 (16.4)	0.414 (10.5)	0.674 (17.1)	0.432 (11.0)	Olive	297
ALNN-3/0-38-1	3/0 AWG	3/0-1 AWG	3/8	0.406 (10.3)	1.000 (25.4)	1.937 (49.2)	1.355 (34.4)	3.731 (94.8)	0.731 (18.6)	0.414 (10.5)	0.761 (19.3)	0.495 (12.6)	Ruby	467
ALNN-3/0-38-134	3/0 AWG	3/0-1 AWG	3/8	0.406 (10.3)	1.750 (44.5)	2.625 (66.7)	1.355 (34.4)	4.419 (112.2)	0.731 (18.6)	0.414 (10.5)	0.761 (19.3)	0.495 (12.6)	Ruby	467
ALNN-3/0-12-134	3/0 AWG	3/0-1 AWG	1/2	0.562 (14.3)	1.750 (44.5)	3.000 (76.2)	1.355 (34.4)	4.794 (121.8)	0.731 (18.6)	0.546 (13.9)	0.761 (19.3)	0.495 (12.6)	Ruby	467
ALNN-4/0-38-1	4/0 AWG	4/0-1 AWG	3/8	0.406 (10.3)	1.000 (25.4)	1.937 (49.2)	1.535 (39.0)	3.963 (100.7)	0.824 (20.9)	0.414 (10.5)	0.854 (21.7)	0.553 (14.0)	White	298
ALNN-4/0-38-134	4/0 AWG	4/0-1 AWG	3/8	0.406 (10.3)	1.750 (44.5)	2.625 (66.7)	1.535 (39.0)	4.651 (118.1)	0.824 (20.9)	0.414 (10.5)	0.854 (21.7)	0.553 (14.0)	White	298
ALNN-4/0-12-1	4/0 AWG	4/0-1 AWG	1/2	0.562 (14.3)	1.000 (25.4)	2.125 (54.0)	1.535 (39.0)	4.151 (105.4)	0.824 (20.9)	0.546 (13.9)	0.854 (21.7)	0.553 (14.0)	White	298
ALNN-4/0-12-134	4/0 AWG	4/0-1 AWG	1/2	0.562 (14.3)	1.750 (44.5)	3.000 (76.2)	1.535 (39.0)	5.026 (127.7)	0.824 (20.9)	0.546 (13.9)	0.854 (21.7)	0.553 (14.0)	White	298
ALNN-250-38-1	250kcmil	250kcmil-1/0 AWG	3/8	0.406 (10.3)	1.000 (25.4)	1.937 (49.2)	1.535 (39.0)	4.003 (101.7)	0.894 (22.7)	0.414 (10.5)	0.924 (23.5)	0.595 (15.1)	Red	324
ALNN-250-38-134	250kcmil	250kcmil-1/0 AWG	3/8	0.406 (10.3)	1.750 (44.5)	2.625 (66.7)	1.535 (39.0)	4.691 (119.2)	0.894 (22.7)	0.414 (10.5)	0.924 (23.5)	0.595 (15.1)	Red	324
ALNN-250-12-1	250kcmil	250kcmil-1/0 AWG	1/2	0.562 (14.3)	1.000 (25.4)	2.125 (54.0)	1.535 (39.0)	4.191 (106.5)	0.894 (22.7)	0.546 (13.9)	0.924 (23.5)	0.595 (15.1)	Red	324
ALNN-250-12-134	250kcmil	250kcmil-1/0 AWG	1/2	0.562 (14.3)	1.750 (44.5)	3.000 (76.2)	1.535 (39.0)	5.066 (128.7)	0.894 (22.7)	0.546 (13.9)	0.924 (23.5)	0.595 (15.1)	Red	324
ALNN-300-38-1	300kcmil	300kcmil-2/0 AWG	3/8	0.406 (10.3)	1.000 (25.4)	1.937 (49.2)	1.535 (39.0)	4.059 (103.1)	0.980 (24.9)	0.414 (10.5)	1.010 (25.7)	0.650 (16.5)	Blue	470
ALNN-300-38-134	300kcmil	300kcmil-2/0 AWG	3/8	0.406 (10.3)	1.750 (44.5)	2.625 (66.7)	1.535 (39.0)	4.747 (120.6)	0.980 (24.9)	0.414 (10.5)	1.010 (25.7)	0.650 (16.5)	Blue	470
ALNN-300-12-1	300kcmil	300kcmil-2/0 AWG	1/2	0.562 (14.3)	1.000 (25.4)	2.125 (54.0)	1.535 (39.0)	4.247 (107.9)	0.980 (24.9)	0.546 (13.9)	1.010 (25.7)	0.650 (16.5)	Blue	470
ALNN-300-12-134	300kcmil	300kcmil-2/0 AWG	1/2	0.562 (14.3)	1.750 (44.5)	3.000 (76.2)	1.535 (39.0)	5.122 (130.1)	0.980 (24.9)	0.546 (13.9)	1.010 (25.7)	0.650 (16.5)	Blue	470

For Tool and Die Information Refer to Tooling Information Page Series: ALNS, ALND, ALNN, ASN

\* When installed with specified dieless tools

Tested to UL 486A/B, UL File E6207

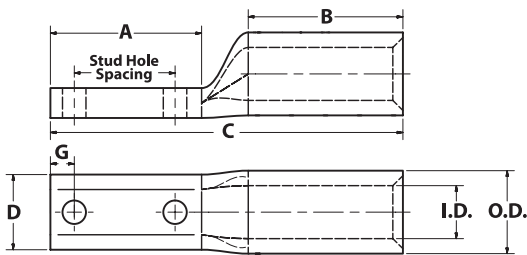
## TYPE ALNN

### Features

- Manufactured from high strength aluminum alloy
- Electro-Tin plated
- Chamfered entry
- Color coded end cap
- Roll marked
- Two bolt hole pattern
- Pre-filled with DE-OX® oxide inhibiting compound
- Range taking
- Narrow Tang
- Suitable for use in circuits rated 35KV or less, proper high voltage spacing and insulation techniques must be used
- Dual rated AL9CU to 90° C

### Benefits

- Offers maximum conductivity and excellent crimping characteristics
- Provides low contact resistance
- For easy conductor insertion
- Identifies the proper compression die
- For easy identification and proper location of crimps
- Provides maximum surface contact, secure attachment, and stabilization
- Prevents oxides from forming
- Permits inventories to be kept to a minimum
- Side by side mounting
- Application versatility
- For use with copper or aluminum conductor



Catalog Number	Wire Size	Expanded Wire Range*	Bolt Size	Stud Hole Dia.	Stud Hole Spacing	Dimensions - in (mm)						Die Color Code	Die Index	
						A	B	C	D	G	O.D.			I.D.
ALNN-350-38-1	350kcmil	350kcmil-3/0 AWG	3/8	0.406 (10.3)	1.000 (25.4)	1.937 (49.2)	2.353 (59.8)	4.913 (124.8)	1.075 (27.3)	0.414 (10.5)	1.105 (28.1)	0.720 (18.3)	Brown	299
ALNN-350-38-134	350kcmil	350kcmil-3/0 AWG	3/8	0.406 (10.3)	1.750 (44.5)	2.625 (66.7)	2.353 (59.8)	5.601 (142.3)	1.075 (27.3)	0.414 (10.5)	1.105 (28.1)	0.720 (18.3)	Brown	299
ALNN-350-12-1	350kcmil	350kcmil-3/0 AWG	1/2	0.562 (14.3)	1.000 (25.4)	2.125 (54.0)	2.353 (59.8)	5.101 (129.6)	1.075 (27.3)	0.546 (13.9)	1.105 (28.1)	0.720 (18.3)	Brown	299
ALNN-350-12-134	350kcmil	350kcmil-3/0 AWG	1/2	0.562 (14.3)	1.750 (44.5)	3.000 (76.2)	2.353 (59.8)	5.976 (151.8)	1.075 (27.3)	0.546 (13.9)	1.105 (28.1)	0.720 (18.3)	Brown	299
ALNN-400-38-1	400kcmil	400kcmil-4/0 AWG	3/8	0.406 (10.3)	1.000 (25.4)	1.937 (49.2)	2.303 (58.5)	4.907 (124.6)	1.158 (29.4)	0.414 (10.5)	1.188 (30.2)	0.762 (19.4)	Green	472
ALNN-400-38-134	400kcmil	400kcmil-4/0 AWG	3/8	0.406 (10.3)	1.750 (44.5)	2.625 (66.7)	2.303 (58.5)	5.595 (142.1)	1.158 (29.4)	0.414 (10.5)	1.188 (30.2)	0.762 (19.4)	Green	472
ALNN-400-12-1	400kcmil	400kcmil-4/0 AWG	1/2	0.562 (14.3)	1.000 (25.4)	2.125 (54.0)	2.303 (58.5)	5.095 (129.4)	1.158 (29.4)	0.546 (13.9)	1.188 (30.2)	0.762 (19.4)	Green	472
ALNN-400-12-134	400kcmil	400kcmil-4/0 AWG	1/2	0.562 (14.3)	1.750 (44.5)	3.000 (76.2)	2.303 (58.5)	5.970 (151.6)	1.158 (29.4)	0.546 (13.9)	1.188 (30.2)	0.762 (19.4)	Green	472
ALNN-500-38-1	500kcmil	500kcmil-4/0 AWG	3/8	0.406 (10.3)	1.000 (25.4)	1.937 (49.2)	2.565 (65.2)	5.234 (132.9)	1.285 (32.6)	0.414 (10.5)	1.315 (33.4)	0.854 (21.7)	Pink	300
ALNN-500-38-134	500kcmil	500kcmil-4/0 AWG	3/8	0.406 (10.3)	1.750 (44.5)	2.625 (66.7)	2.565 (65.2)	5.922 (150.4)	1.285 (32.6)	0.414 (10.5)	1.315 (33.4)	0.854 (21.7)	Pink	300
ALNN-500-12-1	500kcmil	500kcmil-4/0 AWG	1/2	0.562 (14.3)	1.000 (25.4)	2.125 (54.0)	2.565 (65.2)	5.422 (137.7)	1.285 (32.6)	0.546 (13.9)	1.315 (33.4)	0.854 (21.7)	Pink	300
ALNN-500-12-134	500kcmil	500kcmil-4/0 AWG	1/2	0.562 (14.3)	1.750 (44.5)	3.000 (76.2)	2.565 (65.2)	6.297 (159.9)	1.285 (32.6)	0.546 (13.9)	1.315 (33.4)	0.854 (21.7)	Pink	300
ALNN-600-38-1	600kcmil	600kcmil-250kcmil	3/8	0.406 (10.3)	1.000 (25.4)	1.937 (49.2)	2.685 (68.2)	5.431 (137.9)	1.410 (35.8)	0.414 (10.5)	1.440 (36.6)	0.920 (23.4)	Black	473
ALNN-600-38-134	600kcmil	600kcmil-250kcmil	3/8	0.406 (10.3)	1.750 (44.5)	2.625 (66.7)	2.685 (68.2)	6.119 (155.4)	1.410 (35.8)	0.414 (10.5)	1.440 (36.6)	0.920 (23.4)	Black	473
ALNN-600-12-1	600kcmil	600kcmil-250kcmil	1/2	0.562 (14.3)	1.000 (25.4)	2.125 (54.0)	2.685 (68.2)	5.619 (142.7)	1.410 (35.8)	0.546 (13.9)	1.440 (36.6)	0.920 (23.4)	Black	473
ALNN-600-12-134	600kcmil	600kcmil-250kcmil	1/2	0.562 (14.3)	1.750 (44.5)	3.000 (76.2)	2.685 (68.2)	6.494 (164.9)	1.410 (35.8)	0.546 (13.9)	1.440 (36.6)	0.920 (23.4)	Black	473
ALNN-700/750-38-1	700/750kcmil	750kcmil-500kcmil	3/8	0.406 (10.3)	1.000 (25.4)	1.937 (49.2)	2.964 (75.3)	5.803 (147.4)	1.430 (36.3)	0.414 (10.5)	1.460 (37.1)	1.030 (26.2)	Yellow	936
ALNN-700/750-38-134	700/750kcmil	750kcmil-500kcmil	3/8	0.406 (10.3)	1.750 (44.5)	2.625 (66.7)	2.964 (75.3)	6.491 (164.9)	1.430 (36.3)	0.414 (10.5)	1.460 (37.1)	1.030 (26.2)	Yellow	936
ALNN-700/750-12-1	700/750kcmil	750kcmil-500kcmil	1/2	0.562 (14.3)	1.000 (25.4)	2.125 (54.0)	2.964 (75.3)	5.991 (152.2)	1.430 (36.3)	0.546 (13.9)	1.460 (37.1)	1.030 (26.2)	Yellow	936
ALNN-700/750-12-134	700/750kcmil	750kcmil-500kcmil	1/2	0.562 (14.3)	1.750 (44.5)	3.000 (76.2)	2.964 (75.3)	6.866 (174.4)	1.430 (36.3)	0.546 (13.9)	1.460 (37.1)	1.030 (26.2)	Yellow	936
ALNN-1000-38-1	1000kcmil	1000kcmil-750kcmil	3/8	0.406 (10.3)	1.000 (25.4)	1.937 (49.2)	2.996 (76.1)	5.958 (151.3)	1.578 (40.1)	0.414 (10.5)	1.840 (46.7)	1.180 (30.0)	Brown	P302
ALNN-1000-38-134	1000kcmil	1000kcmil-750kcmil	3/8	0.406 (10.3)	1.750 (44.5)	2.625 (66.7)	2.996 (76.1)	6.646 (168.8)	1.578 (40.1)	0.414 (10.5)	1.840 (46.7)	1.180 (30.0)	Brown	P302
ALNN-1000-12-1	1000kcmil	1000kcmil-750kcmil	1/2	0.562 (14.3)	1.000 (25.4)	2.125 (54.0)	2.996 (76.1)	6.146 (156.1)	1.578 (40.1)	0.546 (13.9)	1.840 (46.7)	1.180 (30.0)	Brown	P302
ALNN-1000-12-134	1000kcmil	1000kcmil-750kcmil	1/2	0.562 (14.3)	1.750 (44.5)	3.000 (76.2)	2.996 (76.1)	7.021 (178.3)	1.578 (40.1)	0.546 (13.9)	1.840 (46.7)	1.180 (30.0)	Brown	P302

For Tool and Die Information Refer to Tooling Information Page Series: ALNS, ALND, ALNN, ASN

\* When installed with specified dieless tools

Tested to UL 486A/B, UL File E6207