



SERVICE PARTS LIST

BULLETIN NO.
54-40-8220

SPECIFY CATALOG NO. AND SERIAL NO. WHEN ORDERING PARTS		REVISED BULLETIN	DATE
18 GAUGE SHEAR HEAD ASSEMBLY			Nov. 2004
CATALOG NO. 48-08-0500	SERIAL NUMBER PREFIX & BREAK	WIRING INSTRUCTION	

EXAMPLE:

00 $\frac{0}{0}$

Component Parts (Small #)
Are Included When Ordering
The Assembly (Large #).

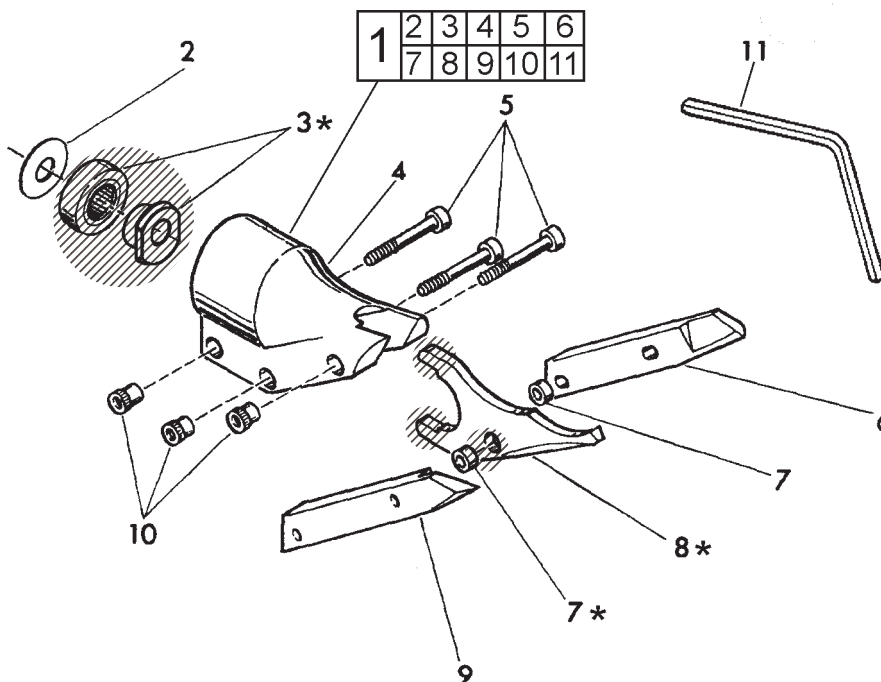


FIG.	PART NO.	DESCRIPTION OF PART	NO. REQ.
1	48-08-0500	Shear Head Assy. (Includes 2 thru 11)	(1)
2	45-88-7310	Washer	(1)
3	43-16-0100	Eccentric Assembly	(1)
4	43-76-0400	Shear Housing	(1)
5	06-75-2115	10-24 x 1-1/4 Skt. Hd. Cap Screw	(3)
6	48-44-0160	Blade - Left Side	(1)
7	42-40-0520	Bushing	(2)
8	48-44-0150	Blade - Center	(1)
9	48-44-0170	Blade - Right Side	(1)
10	43-84-0460	Knurled Insert	(3)
11	49-96-0070	5/32 Hex Allen Wrench	(1)

FIG. LUBRICATION:

* 3,7,8 During assembly, use a dab of Type "E" Grease, No. 49-08-4122 to lubricate flats, pivot hole and sides of center blade (8), eccentric assembly (3) and bushings (7).