



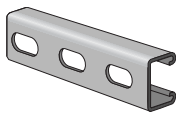
**POWER-STRUT®**



Part No. Std Wt./ List Price  
& Length Fin. Qty 100 per 100 ft.

**PS 520 EH**

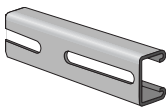
1 5/8" x 13/16" x 12 Ga. ; With 1 1/8" x 9/16" Elongated Holes On 2" Centers



PS 520 EH 10	GR	500	127	\$739.31
PS 520 EH 10	HG	500	119	\$897.77
PS 520 EH 10	GR	500	127	\$739.31
PS 520 EH 10	PL	500	119	\$719.79
PS 520 EH 10	ZD	500	127	\$746.97
PS 520 EH 20	GR	500	127	\$739.31
PS 520 EH 20	HG	500	99	\$919.05
PS 520 EH 20	PG	500	127	\$746.97
PS 520 EH 20	PL	500	119	\$736.85
PS 520 EH 20	ZD	1000	127	\$764.67

**PS 520 S**

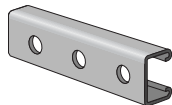
1 5/8" x 13/16" x 12 Ga. Channel; With 13/32" x 3" Slots On 4" Centers



PS 520 S 10	GR	500	127	\$752.84
PS 520 S 10	HG	500	127	\$883.16
PS 520 S 10	PG	500	127	\$780.80
PS 520 S 10	PL	500	116	\$769.08
PS 520 S 10	ZD	500	127	\$799.30
PS 520 S 20	GR	500	127	\$738.57
PS 520 S 20	HG	500	123	\$883.16
PS 520 S 20	PG	500	127	\$780.80
PS 520 S 20	PL	500	116	\$769.08
PS 520 S 20	ZD	1000	127	\$799.30

**PS 520 H**

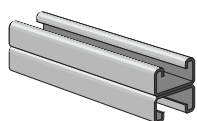
1 5/8" x 13/16" x 12 Ga. Channel; With 9/16" Holes On 1 7/8" Centers



PS 520 H 10	GR	500	119	\$778.62
PS 520 H 10	HG	500	99	\$883.16
PS 520 H 10	PG	500	127	\$782.25
PS 520 H 10	PL	500	119	\$769.08
PS 520 H 20	GR	500	127	\$797.07
PS 520 H 20	PG	500	119	\$800.79
PS 520 H 20	PL	500	119	\$751.27

**PS 520 2T3**

Two pcs. PS 520 Welded Back to Back 1 5/8" x 1 5/8" x 12 Ga.



PS 520 2T3 10	GR	250	254	\$1,478.45
PS 520 2T3 10	HG	250	254	\$1,920.97
PS 520 2T3 10	PG	250	254	\$1,453.16
PS 520 2T3 10	PL	250	254	\$1,465.46
PS 520 2T3 20	GR	300	254	\$1,478.45
PS 520 2T3 20	HG	300	254	\$1,920.97
PS 520 2T3 20	PG	300	254	\$1,453.16
PS 520 2T3 20	PL	300	254	\$1,465.46
PS 520 2T3 20	ZD	300	254	\$1,516.34

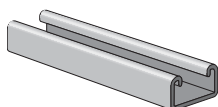
**PS 520 2T3**

Two pcs. PS 520 Welded Back to Back.  
With 1 1/8" x 9/16" Elongated Holes On 2" Centers

PS 520 EH 2T3 20	GR	300	256	\$2,362.01
PS 520 EH 2T3 20	HG	300	268	\$2,303.91
PS 520 EH 2T3 20	PG	300	256	\$2,374.43
PS 520 EH 2T3 20	ZD	300	256	\$2,374.43

**PS 560**

1 5/8" x 13/16" x 16 Ga. Channel



PS 560 10	GR	500	82	\$431.72
PS 560 10	PG	500	82	\$441.86
PS 560 20	GR	500	82	\$431.72
PS 560 20	HG	500	82	\$695.64
PS 560 20	PG	500	82	\$450.19



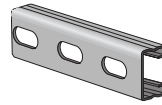
**POWER-STRUT®**



Part No. Std Wt./ List Price  
& Length Fin. Qty 100 per 100 ft.

**PS 560 EH**

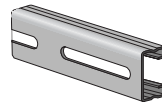
1 5/8" x 13/16" x 16 Ga. Channel  
With 1 1/8" x 9/16" Elongated Holes On 2" Centers



PS 560 EH 10	GR	500	79	\$513.13
PS 560 EH 10	PG	500	79	\$534.45
PS 560 EH 10	PL	500	79	\$482.99
PS 560 EH 20	GR	500	79	\$525.29
PS 560 EH 20	PG	500	79	\$534.45

**PS 560 S**

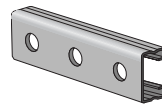
1 5/8" x 13/16" x 16 Ga. Channel; With 13/32" x 3" Slots On 4" Centers



PS 560 S 10	GR	500	78	\$593.98
PS 560 S 10	PG	500	78	\$722.37
PS 560 S 10	PL	500	78	\$546.53
PS 560 S 20	GR	500	78	\$593.98
PS 560 S 20	PG	500	78	\$722.37
PS 560 S 20	PL	500	78	\$546.53

**PS 560 H**

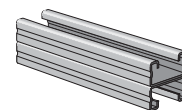
1 5/8" x 13/16" x 16 Ga. Channel; With 9/16" Holes On 1 7/8" Centers



PS 560 H 10	GR	500	79	\$593.98
PS 560 H 10	PG	500	79	\$722.37
PS 560 H 10	PL	500	79	\$546.53
PS 560 H 20	GR	500	79	\$593.98
PS 560 H 20	PG	500	79	\$722.37
PS 560 H 20	PL	500	79	\$546.53

**PS 560 2T3**

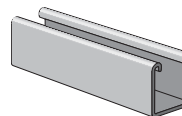
Welded Channel; 1 5/8" x 1 5/8" x 16 Ga.



PS 560 2T3 10	GR	250	164	\$1,270.04
PS 560 2T3 10	HG	250	164	\$1,685.43
PS 560 2T3 10	PG	250	164	\$1,326.42
PS 560 2T3 20	GR	300	164	\$1,270.04
PS 560 2T3 20	HG	300	164	\$1,685.43
PS 560 2T3 20	PG	300	164	\$1,326.42
PS 560 2T3 20	PL	300	164	\$1,122.19

**PS 600J**

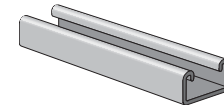
Channel Junior Strut - 13/16" x 13/16" x 19 Ga.



PS 600J 10	GR	500	37	\$578.04
PS 600J 10	PG	500	37	\$647.99
PS 600J 10	PL	500	37	\$580.49
PS 600J 16	GR	800	37	\$554.43

**PS 700J**

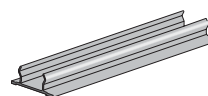
13/16" x 13/32" x 19 Ga. Channel



PS 700J 10	GR	1000	26	\$416.48
PS 700J 10	PG	1000	26	\$477.77
PS 700J 10	PL	1000	26	\$414.82

**PS 707, PS707P**

Raceway Closure Strip; For All 1 5/8" Width Channels (10' length);  
U.L. Listed When Used With Channel To Form Surface Raceway



PS 707 10	GR	PVC	200	10	\$387.57
PS 707 10	GR		500	41	\$356.96
PS 707 10	PVC		200	10	\$387.57
PS 707 10	PG		500	41	\$345.58
PS 707 10	PL		500	41	\$273.44
PS 707P 10	GR		200	10	\$805.06
PS 707P 10	GREY		500	11	\$770.02
PS 707P 10	WHITE		200	10	\$757.87