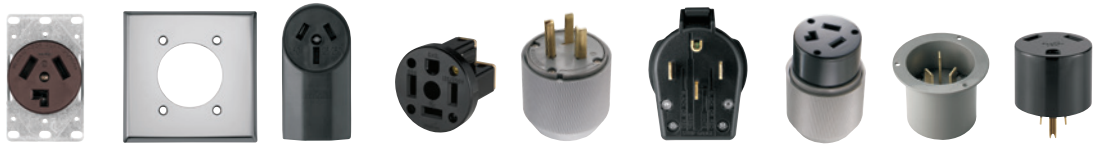


## Straight blade power devices 20, 30, 50 & 60A



Rating: Amps V/AC	Receptacle/ plug NEMA configuration	Flush receptacle	Wallplate	Surface receptacle	Panel mount receptacle	Plugs	Angle plugs	Connectors	Flanged inlets	Adapters
-------------------------	---	---------------------	-----------	-----------------------	---------------------------	-------	-------------	------------	-------------------	----------

### 2-pole, 3-wire grounding

30A 125V	5-30R 5-30P	Commercial: <b>1233</b> (Brown)	Standard size: <b>39CH, 68, 2068, 2168, 93221, 93227</b>	Commercial: <b>1232</b> (Black)	Commercial: <b>U1263</b> (Black)	Industrial: <b>5717N</b> (Gray)	Commercial: <b>83</b> (Black)	Commercial: <b>S41</b> (Black) Industrial: <b>5717AN</b> (Gray)	Industrial: <b>6716N</b> (Gray & Black)	Industrial: <b>5717NFI</b> (Gray)	Commercial: <b>1264</b> (Plug to NEMA 5-15R or 5-20R) (Black)						
30A 125V	TT-30R TT-30P	Commercial: <b>1263</b> (Black)										Commercial: <b>1263</b> (Black)	Commercial: <b>83</b> (Black)	Commercial: <b>S42</b> (Black) Industrial: <b>5701AN</b> (Gray)	Industrial: <b>6700N</b> (Gray & Black)	Industrial: <b>5701NFI</b> (Gray)	Commercial: <b>1264</b> (Plug to NEMA 5-15R or 5-20R) (Black)
30A 250V	6-30R 6-30P	Commercial: <b>1234</b> (Black) Industrial: <b>5700N</b> (Black)										Mid-size: <b>5068, PJ703, PJ724</b>	Commercial: <b>1251</b> (Black)	Industrial: <b>5703N</b> (Gray)	Industrial: <b>5703AN</b> (Gray)	Industrial: <b>6795N</b> (Gray & Black)	Industrial: <b>5703NFI</b> (Gray)
30A 277V	7-30R 7-30P	Industrial: <b>5795N</b> (Black)										Commercial: <b>1251</b> (Black)	Industrial: <b>5712N</b> (Gray)	Commercial: <b>S41</b> (Black) Industrial: <b>5712AN</b> (Gray)	Industrial: <b>6711N</b> (Gray & Black)	Industrial: <b>5712NFI</b> (Gray)	
50A 125V	5-50R 5-50P	Commercial: <b>1253</b> (Black)										Commercial: <b>1252</b> (Black)	Industrial: <b>5710N</b> (Gray)	Commercial: <b>S42</b> (Black) Industrial: <b>5710AN</b> (Gray)	Industrial: <b>6709N</b> (Gray & Black)	Industrial: <b>5710NFI</b> (Gray)	
50A 250V	6-50R 6-50P	Commercial: <b>1254</b> (Black) Industrial: <b>5709N</b> (Black)										Commercial: <b>1252</b> (Black)	Industrial: <b>5710N</b> (Gray)	Commercial: <b>S42</b> (Black) Industrial: <b>5710AN</b> (Gray)	Industrial: <b>6709N</b> (Gray & Black)	Industrial: <b>5710NFI</b> (Gray)	
50A 277V	7-50R 7-50P											Commercial: <b>1252</b> (Black)	Industrial: <b>5705N</b> (Gray)	Industrial: <b>5705AN</b> (Gray)	Industrial: <b>6796N</b> (Gray & Black)	Industrial: <b>5705NFI</b> (Gray)	

### 3-pole, 3-wire non-grounding

20A 125/250V	10-20R 10-20P	Commercial: <b>805</b> (Ivory)			Industrial: <b>9151N</b> (Gray) Commercial: <b>2836</b> (Armed PVC) (Yellow)					
30A 125/250V Dryer	10-30R 10-30P	Commercial: <b>38B</b> (Brown)	Standard size: <b>39CH, 68, 2068, 2168, 93221, 93227</b>	Commercial: <b>125</b> (Black)	Industrial: <b>9337N</b> (Gray)	Commercial: <b>S80</b> (Black) Industrial: <b>9352AN</b> (Gray)	Industrial: <b>9341N</b> (Gray & Black)	Industrial: <b>9337NFI</b> (Gray)		
50A 125/250V Range	10-50R 10-50P	Commercial: <b>32B</b> (Brown) Industrial: <b>7985N</b> (Black)	Mid-size: <b>5068, PJ703, PJ724</b> Standard size: <b>192</b>	Commercial: <b>112</b> (Black)	Industrial: <b>4524N</b> (Gray)	Commercial: <b>S80</b> (Black) Industrial: <b>7952AN</b> (Gray)	Industrial: <b>4526N</b> (Gray & Black)	Industrial: <b>4524NFI</b> (Gray)		

Power device dimensional information: B-20; Specification information: B-25-B-27  
Compliances, specifications and availability are subject to change without notice.

✓ All products on this page are RoHS compliant – Page Q-30